



34 Leabrook Place, Pimpama


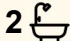
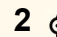
PRIME LOCATION - POOL & PARK SIDE LIVING

Perfectly positioned directly across from open green parklands, this well presented home at 34 Leabrook Place offers comfort, convenience, and carefree family living. In a quiet, family-friendly street and just minutes to Pimpama State School, the location couldn't be more ideal for growing families.

Step inside to a well-designed floorplan that delivers both connection and separation. The home features four generously sized bedrooms, each with built-in robes, while the master suite enjoys its own walk-in robe and private ensuite.

A modern kitchen with island bench sits at the heart of the home, overlooking the open-plan dining and living area that flows seamlessly to the outdoor patio. You'll also love the additional formal lounge room, providing a valuable second living space.

Outdoors, the covered alfresco area is perfect for entertaining and looks out to the in-ground pool, creating the ideal setting for family fun and weekend relaxation. The fully fenced 449m² block is low maintenance, giving you more time to enjoy the lifestyle this location offers.

4  2  2 

FOR SALE
CONTACT AGENT

AGENTS

Nicole Hintz
0403 895 705
nhintz@ljhg.com.au

Liza Neuss
0447 006 098
liza@ljhg.com.au

AGENCY

LJ Hooker Ormeau
(07) 5549 4500

All information contained therein is gathered from relevant third parties sources.
We cannot guarantee or give any warranty about the information provided.
Interested parties must rely solely on their own enquiries.

 **LJ Hooker**

Features You'll Love

- Four bedrooms, all with built-in robes
- Master suite with walk-in robe and private ensuite
- Modern kitchen with island bench
- Open-plan family, dining & living with patio access
- Separate formal lounge for added versatility
- Main bathroom with separate bath and shower
- Internal laundry with outdoor access
- Covered alfresco overlooking the sparkling in-ground pool
- Double lock-up garage with internal entry
- " Low-maintenance, fully fenced yard
- " Land size: 449m² (approx.)
- " Internal + external living: 173m² (approx.)
- Home built in 2016 approx - Pool Installed 2022 Approx

Lifestyle & Location

- Set in the heart of Pimpama, you'll enjoy effortless access to:
- Pimpama State School & childcare centres
- Local parks, playgrounds & walking tracks
- Pimpama Sports Hub
- Shopping centres, cafes & amenities
- Easy M1 access to Brisbane or the Gold Coast
- Short drive to theme parks and stunning beaches

This is a fantastic opportunity to secure a family-friendly home in a thriving corridor with everything at your fingertips.

MORE DETAILS

Property ID	1YGZGWH
Property Type	House
House Size	173 m2
Land Area	449 m2
Including	Pool Dishwasher Outdoor Entertaining Built-in-Robes Remote Garage

Nicole Hintz 0403 895 705

Director | L.R.E.A | Independent Contractor | nhintz@ljhgc.com.au

Liza Neuss 0447 006 098

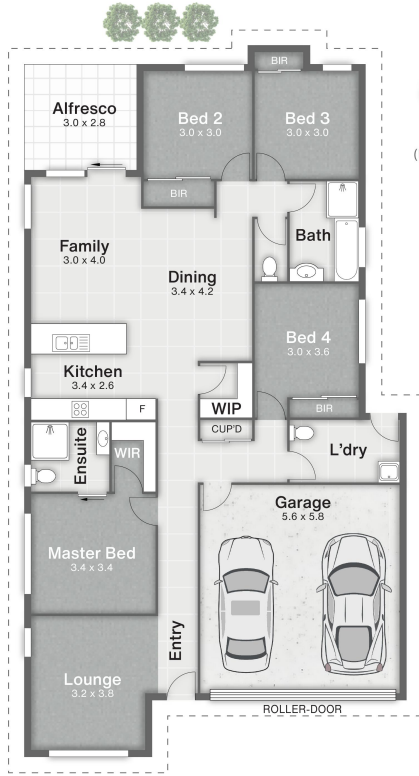
Sales Associate to Nicole Hintz Independent Contractor | liza@ljhgc.com.au

LJ Hooker Ormeau (07) 5549 4500

Unit 10 Norfolk Village Shopping Ctr, 170-174 Pascoe Road,
ORMEAU QLD 4208

ormeau.ljhooker.com.au | ormeau@ljhgc.com.au





- 1 Porch
- 2 Garage
- 3 Alfresco
- 4 Pool
- 5 Shed

34 Leabrook Place **PIMPAMA**

4 | 2 | 2 | 173m² | 449m²



DISCLAIMER
This is not a legal document; all measurements and dimensions are approximate and are subject to errors, omission or misstatement. No liability will be accepted. Plans are shown for marketing purposes only.