



## Pimpama, 2A Labassa Avenue

Make Me Yours !

Nestled within the family-friendly Meadows Estate, the delightful residence at 2A Labassa Avenue, Pimpama, is a prime opportunity for families, first home buyers, and astute investors alike. This impressive four-bedroom highset home is positioned on a 316 square metre block, offering a spacious 181 sqm floor plan that has been meticulously designed for comfortable living.

Each of the four well-appointed bedrooms radiates warmth and comfort, with the master suite boasting an ensuite with a shower, air conditioning, and a walk-in robe, ensuring a tranquil retreat for parents. The additional family bathroom is thoughtfully equipped with both a shower and a bathtub, perfect for young families.

The heart of the home is the contemporary kitchen, which overlooks the alfresco area, allowing you to keep an eye on the outdoor fun while preparing meals. A four-burner gas cooktop and ample storage, including clever under stairs space, are just a few of the



**For Sale**  
Offers Over \$888,000

**View**  
By Appointment

**Contact**  
**Dawie Olivier**  
0447 822 879  
dolivier@ljhg.com.au

**Mel Johnson**  
0406 336 133  
mjohnson@ljhg.com.au

# LJ Hooker

**Disclaimer:** All information contained therein is gathered from relevant third parties sources. We cannot guarantee or give any warranty about the information provided. Interested parties must rely solely on their own enquiries.

**LJ Hooker Coomera**  
**(07) 5585 7888**

conveniences on offer.

Separate dining and living spaces ensure that there's room for both entertainment and quiet relaxation, with air conditioning providing comfort during the warmer months. Currently tenanted until the 29th of July 2025, this property presents a lucrative investment opportunity with immediate returns.

Located on a peaceful street close to parks, the property is also within walking distance to new schools, shops, and is just minutes from the M1 motorway, providing excellent connectivity.

With dual parking spaces and set in an area experiencing rapid growth, 2A Labassa Avenue represents not just a house, but a home where lasting memories are waiting to be made.

Your idyllic family sanctuary awaits, but be quick, phone Dawie today on 0447 822 879 to secure your inspection as this property will sell quickly.

Other than location, convenience and affordability, this lovely property also offers:

- Currently tenanted until 29 July 2025 with great tenants
- 4 bedrooms including large Master at the rear with walk in robe and en-suite
- 3 additional bedrooms with ceiling fans and wardrobes
- Open plan living/dining and kitchen with quality appliances
- Gas cooktop
- Aircon in master
- Aircon in living space
- Undercover alfresco area
- Low maintenance gardens
- Laundry
- Double internal access garage with auto door

Why families love living in Meadows Estate in Pimpama:

Families love Meadows Estate in Pimpama for its convenient location, access to amenities, and family-friendly atmosphere. The estate offers proximity to schools, shopping centres, parks, and the M1 motorway, making it easy for families to access essential services and enjoy recreational activities. The estate is also known for its modern homes and well-planned community spaces, creating a comfortable and convenient living environment.

Disclaimer: Whilst every effort has been made to ensure the accuracy of these particulars, no warranty is given by the owner or the agent as to their accuracy. Interested parties should not rely on these particulars as representations of fact but must instead satisfy themselves by inspection or otherwise.



## More About this Property

Property ID	43BJGTJ
Property Type	House
House Size	181 m2
Land Area	318 m2
Including	Ensuite Air Conditioning Dishwasher Outdoor Entertaining Built-in-Robes Fully Fenced Remote Garage

### Dawie Olivier 0447 822 879

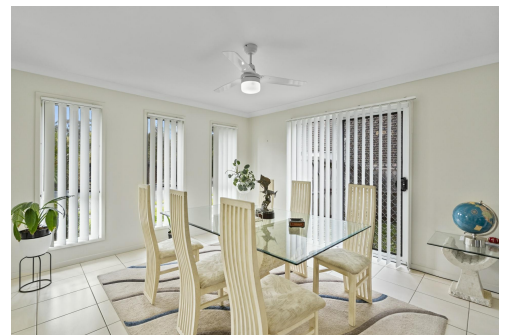
Sales Specialist | [dolivier@ljhgc.com.au](mailto:dolivier@ljhgc.com.au)

### Mel Johnson 0406 336 133

Sales Specialist | [mjohnson@ljhgc.com.au](mailto:mjohnson@ljhgc.com.au)

### LJ Hooker Coomera (07) 5585 7888

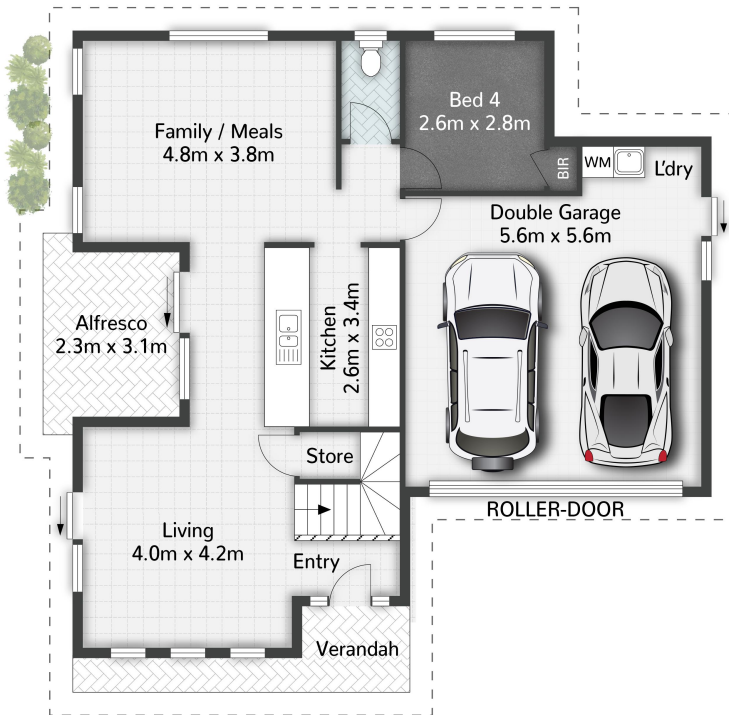
The Hub, 5/90 Days Road, UPPER COOMERA QLD 4209  
[coomera.ljhooker.com.au](http://coomera.ljhooker.com.au) | [coomera@ljhgc.com.au](mailto:coomera@ljhgc.com.au)



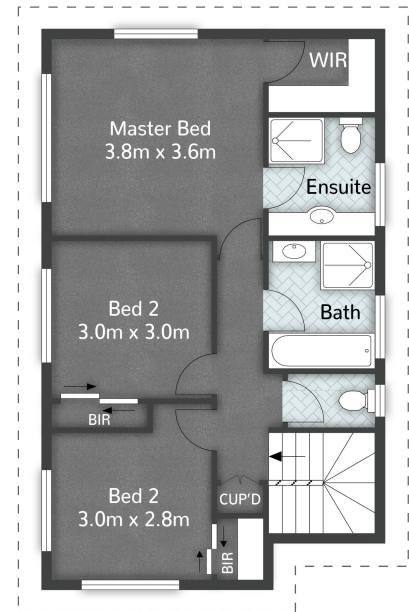
# LJ Hooker

**LJ Hooker Coomera**  
**(07) 5585 7888**

**Disclaimer:** All information contained therein is gathered from relevant third parties sources.  
We cannot guarantee or give any warranty about the information provided. Interested parties must rely solely on their own enquiries.



GROUND FLOOR



FIRST FLOOR



2A Labassa Avenue PIMPAMA

4 | 2 | 2 | 181m<sup>2</sup>

**LJ Hooker**

Coomera Ormeau Tamborine Mountain

All dimensions are approximate; they are subject to errors and inaccuracies and no liability will be accepted. Plans are shown for marketing purposes only.

**LJ Hooker**

**LJ Hooker Coomera**  
(07) 5585 7888

**Disclaimer:** All information contained therein is gathered from relevant third parties sources. We cannot guarantee or give any warranty about the information provided. Interested parties must rely solely on their own enquiries.