

28 Nightshade Crescent, Pimpama

Prime Pimpama Living with Stunning Mountain Views

Register your interest now - offers close Monday 15th June.

Family Comfort, Elevated Views & Everyday Convenience

Nestled in a peaceful and family-friendly pocket of Pimpama, this beautifully maintained home delivers the perfect balance of comfort, lifestyle, and convenience. Positioned on an elevated 493sqm block and built in 2015, the property enjoys cooling breezes, picturesque mountain views, and stunning sunsets-best savoured from the comfort of your own backyard with a glass of wine in hand. Whether it's a spacious entertainment deck, a sparkling pool, or both, there's is ample potential to enhance the lifestyle appeal and make the most of the stunning outlook.

Designed with modern family living in mind, the home offers four generous bedrooms, two stylish bathrooms, and two separate living areas, providing ample space for growing families to relax, entertain, and enjoy quality time together. The thoughtfully designed floorplan combines practicality with contemporary style, creating a warm and welcoming atmosphere throughout.

4  2  2 

FOR SALE

\$1 100 000 + Offers close 15th June

VIEW

Thu 11th Jun @ 4:45PM - 5:15PM

AGENTS

Mel Johnson
0406 336 133
mjohnson@ljhgc.com.au

AGENCY

LJ Hooker Coomera
(07) 5585 7888

All information contained therein is gathered from relevant third parties sources.
We cannot guarantee or give any warranty about the information provided.
Interested parties must rely solely on their own enquiries.

 **LJ Hooker**

Conveniently located with easy access to the M1 both north and south, commuting is effortless while still enjoying the peace and privacy of a quiet neighbourhood. Schools, shopping centres, public transport, and everyday amenities are all within easy reach, making this an ideal opportunity for families, first-home buyers, or investors alike.

Features You'll Love:

- Immaculately presented owner-occupied home
- Four spacious bedrooms with built-in storage
- Two modern bathrooms, including ensuite to master
- Double lock-up garage with internal access
- Two separate living areas for flexible family living
- Separate laundry
- Well-appointed kitchen with gas cooktop
- Low-maintenance yard and gardens
- Elevated 493sqm block capturing mountain views and cooling breezes
- Built in 2015
- Quiet, family-friendly location
- Easy access to the M1 for northbound and southbound travel
- 7 minute drive to Westfield Coomera
- Only minutes to schools both public and private
- Close to transport including the new Pimpama train station
- Walking distance to The Pimpama Sports Hub, the largest sports precinct on the northern Gold Coast
- With retail hubs of both Pimpama and Upper Coomera are only minutes away - you will be spoilt for choice

What more could you want or need?
Quiet comfort in a prime location.

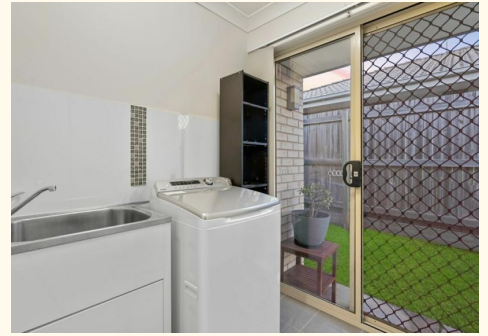
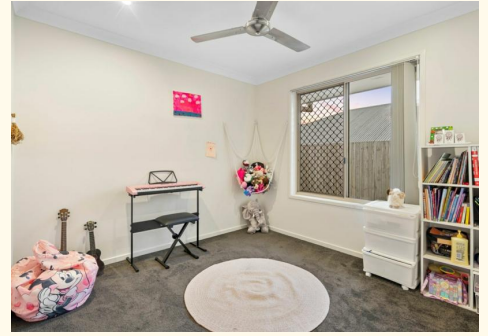
- Whilst every effort has been made to ensure the accuracy of these particulars, no warranty is given by the owner or the agent as to their accuracy. Interested parties should not rely on these particulars as representations of fact but must instead satisfy themselves by inspection or otherwise.

MORE DETAILS

Property ID	43THGTJ
Property Type	House
Land Area	493 m2

Mel Johnson 0406 336 133
Sales Specialist | mjohnson@ljhgc.com.au

LJ Hooker Coomera (07) 5585 7888
The Hub, 5/90 Days Road, UPPER COOMERA QLD 4209
coomera.ljhooker.com.au | coomera@ljhgc.com.au





28 Nightshade Crescent PIMPAMA

4 | 2 | 2 | 187m²

LJ Hooker

Coomera Ormeau Tamborine Mountain

All dimensions are approximate; they are subject to errors and inaccuracies and no liability will be accepted. Plans are shown for marketing purposes only.

All information contained therein is gathered from relevant third parties sources. We cannot guarantee or give any warranty about the information provided. Interested parties must rely solely on their own enquiries.

LJ Hooker