



Pimpama, 27 Looby Crescent

OWNERS ARE MOVING INTERSTATE!

****Welcome to 27 Looby Crescent, Pimpama****

A beautifully appointed family home where comfort meets convenience in a sought-after location.

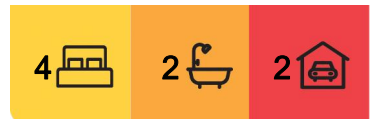
Nestled in a peaceful and family-friendly neighbourhood, this spacious home offers serene outlooks and a private, open feel that's perfect for relaxed living. Thoughtfully designed, it combines style and functionality with plenty of space for the whole family to enjoy.

Step inside to find four generous bedrooms, two modern bathrooms, and two separate living areas, offering flexible spaces for both entertaining and everyday living. The heart of the home flows seamlessly to a large outdoor entertaining area-ideal for weekend barbecues or unwinding under the stars.

Stay comfortable year-round with ducted air conditioning and ceiling fans throughout. The



Disclaimer: All information contained therein is gathered from relevant third parties sources. We cannot guarantee or give any warranty about the information provided. Interested parties must rely solely on their own enquiries.



For Sale
Contact Agent

View
ljhooker.com.au/E0J0C

Contact
David Brown
0432 010 020
david.brown@ljhooker.com.au

Lucas Rupp
0406 249 324
lucas.rupp@ljhooker.com.au

LJ Hooker Oxenford
(07) 5632 8428

low-maintenance backyard and convenient pathway access from the front make outdoor living easy and enjoyable. This is a home designed to make life simple, stylish, and stress-free.

****Property Features:****

- * Master bedroom with ensuite and ducted air conditioning
- * Three additional bedrooms, each with built-in robes and split-system A/C
- * Two spacious and distinct living areas
- * Ducted air conditioning and ceiling fans throughout
- * Modern kitchen with ample bench space
- * Double lock-up garage
- * Covered outdoor entertainment and BBQ area
- * Low-maintenance backyard
- * Built in 2017 on a 405m² block

****Location Highlights:****

- * Westfield Coomera —3.8 km
- * Costco Coomera —4.4 km
- * Pimpama State Secondary College —2.1 km
- * St Joseph's College —1.5 km
- * M1 Motorway access —5.2 km

****The Perfect Family Lifestyle Awaits****

Spacious, stylish, and superbly located-this home ticks all the boxes. Whether you're entertaining guests or enjoying quiet family time, 27 Looby Crescent offers the ideal setting. Don't miss your chance to secure this exceptional property.

****Contact us today to arrange your inspection!****

Disclaimer:

We have in preparing this information used our best endeavours to ensure that the information contained herein is true and accurate, but accept no responsibility and disclaim all liability in respect of any errors, omissions, inaccuracies or misstatements that may occur. Prospective purchasers should make their own enquiries to verify the information contained herein.



LJ Hooker Oxenford
(07) 5632 8428

Disclaimer: All information contained therein is gathered from relevant third parties sources. We cannot guarantee or give any warranty about the information provided. Interested parties must rely solely on their own enquiries.

More About this Property

Property ID	E0J0C
Property Type	House
Land Area	402 m2

David Brown 0432 010 020

Principal | LREA | david.brown@ljhooker.com.au

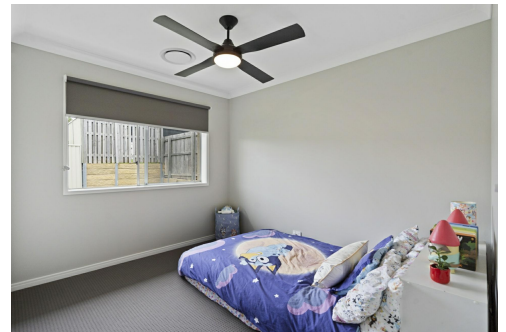
Lucas Rupp 0406 249 324

Sales Associate to David Brown | lucas.rupp@ljhooker.com.au

LJ Hooker Oxenford (07) 5632 8428

13/5 Michigan Drive, OXFENFORD QLD 4210

oxenford.ljhooker.com.au | oxenford@ljhooker.com.au



LJ Hooker Oxenford
(07) 5632 8428

Disclaimer: All information contained therein is gathered from relevant third parties sources. We cannot guarantee or give any warranty about the information provided. Interested parties must rely solely on their own enquiries.



27 Lobby Crescent, Pimpama

BED 4 BATH 2 CAR 2

Internal: 167 m² | External: 13 m² | Approx Total: 180 m²

Whilst every attempt has been made to ensure the accuracy of the floor plan contained here, measurements of doors, windows, rooms and any other item are approximate and no responsibility is taken for any error, omission, or misstatement. This plan is for illustrative purposes only and should only be used as such by any prospective purchaser.

