



Pimpama, 23 Cairnlea Drive

Welcome to 23 Cairnlea Drive, Pimpama - Practical Living in a Prime Location

Perfectly positioned within the ever-evolving heart of Pimpama, this well-designed split-level home offers a fantastic opportunity for both savvy investors and owner-occupiers. With its modern finishes, thoughtful layout, and low-maintenance appeal, 23 Cairnlea Drive delivers effortless, comfortable living in one of the Gold Coast's fastest-growing suburbs.

Step Inside:

As you enter, you're greeted with a functional and inviting layout that separates living spaces for enhanced privacy and flow. The split-level design provides a natural separation between the entertaining areas and the bedroom zones, ideal for both families and shared living arrangements.

Living & Entertaining:

The open-plan living area is bright and airy, featuring air conditioning and ceiling fans to



For Sale
CONTACT AGENT

View
By Appointment

Contact
Nykisha Brown
0435 990 266
nbrown@ljhg.com.au

Mel Johnson
0406 336 133
mjohnson@ljhg.com.au

LJ Hooker

Disclaimer: All information contained therein is gathered from relevant third parties sources. We cannot guarantee or give any warranty about the information provided. Interested parties must rely solely on their own enquiries.

LJ Hooker Coomera
(07) 5585 7888

keep the space comfortable all year round. Step out onto the covered balcony to enjoy scenic views and afternoon breezes perfect for morning coffee or evening relaxation. At the heart of the home, a modern kitchen boasts stainless steel appliances, ample bench space, and a sleek design that will satisfy both everyday cooks and entertainers alike.

Bedrooms & Bathrooms:

This home comprises four generously sized bedrooms, including a private master suite complete with an ensuite bathroom. The remaining bedrooms are serviced by a centrally located second bathroom, making it ideal for families or guests.

Outdoors:

Set on a 421m² block, this property offers just the right amount of outdoor space - plenty of room for the kids to play and pets to roam, while still being low-maintenance so you can spend more time enjoying your home and less time maintaining it.

Additional Features:

- Electric double lock-up garage
- Ceiling fans throughout
- Split-system air conditioning
- Modern, neutral colour palette
- Plenty of natural light

Location Highlights:

You'll enjoy quick and easy access to the M1 motorway, placing you just minutes from Brisbane or the Gold Coast beaches. A range of schools and shopping centres are nearby, including the vibrant Pimpama City Shopping Centre and the soon-to-be-completed Pimpama Train Station, ensuring convenience now and great potential for future growth. Plus, you're just a short drive away from world-class theme parks, attractions, and the very best of the Gold Coast lifestyle.

Whether you're a first-time buyer, investor, or looking for a home that ticks all the boxes - 23 Cairnlea Drive is a must-inspect. Properties in this area don't last long, so book your inspection today!

Disclaimer: While every effort has been made to ensure accuracy, LJ Hooker Coomera will not be liable for any errors in typing or information. All details are deemed correct at the time of printing.

More About this Property

Property ID	43C5GTJ
Property Type	House
Land Area	421 m2
Including	Ensuite

Nykisha Brown 0435 990 266

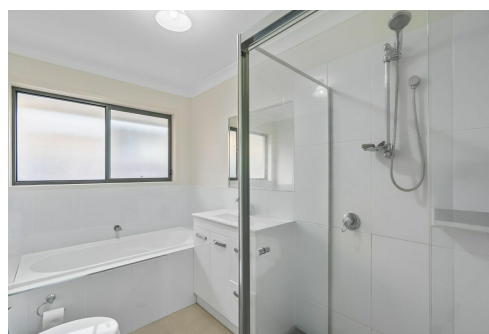
Sales Specialist | nbrown@ljhgc.com.au

Mel Johnson 0406 336 133

Sales Specialist | mjohnson@ljhgc.com.au

LJ Hooker Coomera (07) 5585 7888

The Hub, 5/90 Days Road, UPPER COOMERA QLD 4209
coomera.ljhooker.com.au | coomera@ljhgc.com.au



LJ Hooker

Disclaimer: All information contained therein is gathered from relevant third parties sources. We cannot guarantee or give any warranty about the information provided. Interested parties must rely solely on their own enquiries.

**LJ Hooker Coomera
(07) 5585 7888**