



Pimpama, 22 John Crescent

Attention Families, Investors and First Home Buyers

Welcome to 22 John Crescent, Pimpama, a beautifully presented low-set brick home on a large 681m² block, situated on a quiet, elevated street. This suburb is ideally located between Brisbane and the Gold Coast for commuters and is close to primary and secondary schools, shopping centres, parklands, and the Pavilion.

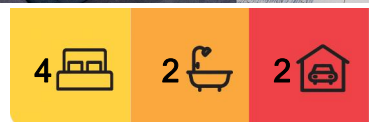
Built in 2014, this immaculate home features four generously sized bedrooms, each with built-in robes. The master suite is spacious and includes an ensuite and walk-in robe for added convenience. The separate living areas are thoughtfully designed to accommodate family time, relaxation, or entertaining guests.

Inclusions:

- * Open-plan kitchen with large bench space, gas stove, and ample storage
- * Expansive family room leading to the patio and large backyard
- * Air-conditioning in the living area and ceiling fans and screens throughout



Disclaimer: All information contained therein is gathered from relevant third parties sources. We cannot guarantee or give any warranty about the information provided. Interested parties must rely solely on their own enquiries.



For Sale
Contact Agent

View
ljhooker.com.au/BSXXF2S

Contact
Courtney Brown
0410 232 200
cbrown@ljhpropertycentre.com.au

LJ Hooker Property Centre
(07) 3286 2500

- * Elevated position to capture the breezes
- * Huge backyard with manicured lawns and established gardens
- * 681m2 yard with room for a pool

This property is situated in a highly sought-after location, offering unbeatable convenience to Pimpama State Primary and Secondary Schools, the Pimpama Junction Shopping Centre and Pavilion. The M1 Motorway is easily accessible, providing access to both Brisbane and the Gold Coast. Medical centres, parks, and a golf course are also close by, making this location ideal for everyday living.

Fabulous house proud tenants in place until the end of February, paying \$600 per week and would love the opportunity to stay if possible.

If you're a first-time homebuyer, investor or seeking a family-friendly space to grow, do not look past 22 John Crescent. Contact Courtney Brown at LJ Hooker on 0410 232 200 for more information.

All information contained herein is gathered from sources we consider to be reliable. However, we cannot guarantee or give any warranty about the information provided. Interested parties must solely rely on their own enquiries.

Note: This property is being sold without a price and therefore a price guide cannot be provided. The website may have filtered the property into a price bracket for website functionality purposes only.

More About this Property

Property ID	BSXXF2S
Property Type	House
Land Area	681 m2
Including	Air Conditioning

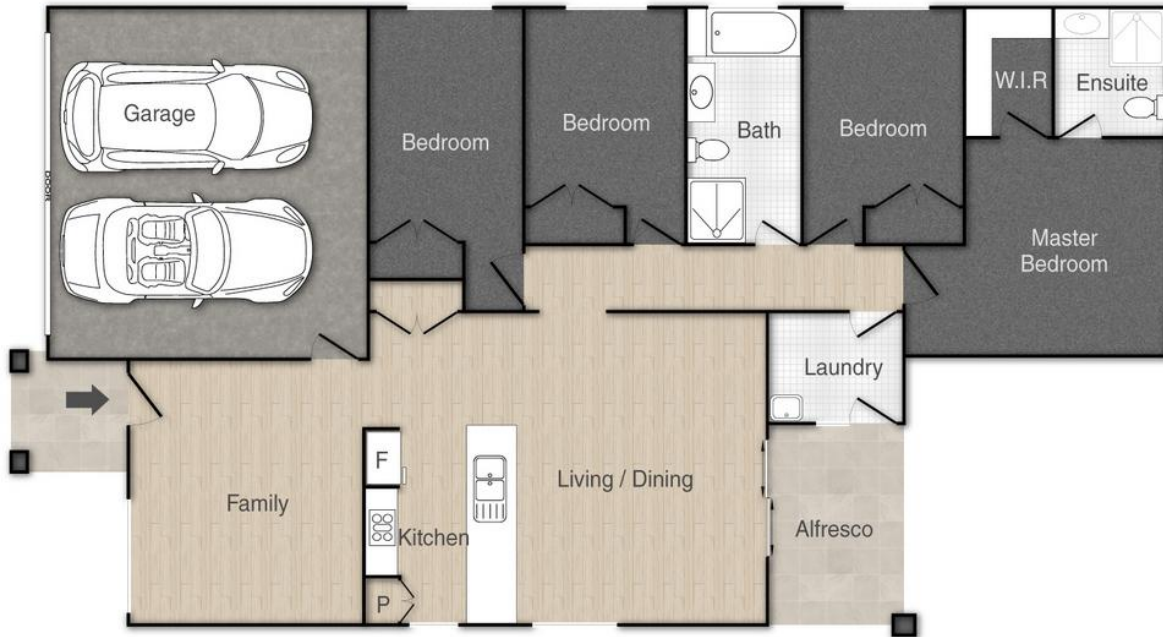
Courtney Brown 0410 232 200
Independent Contractor - All About Selling Pty Ltd |
cbrown@ljhpropertycentre.com.au

LJ Hooker Property Centre (07) 3286 2500
152-164 Shore St West, Raby Bay, Brisbane Qld 4163
propertycentre.ljhooker.com.au | hello@ljhpc.com.au



LJ Hooker Property Centre
(07) 3286 2500

Disclaimer: All information contained therein is gathered from relevant third parties sources. We cannot guarantee or give any warranty about the information provided. Interested parties must rely solely on their own enquiries.



22 John Crescent, Pimpama

PLEASE NOTE THIS PLAN IS FOR MARKETING PURPOSES AND IS TO BE USED AS A GUIDE ONLY. ALL MARKINGS, MEASUREMENTS, AREAS, AND LAYOUT ARE INDICATIVE ONLY AND INTERESTED PARTIES SHOULD MAKE THEIR OWN ENQUIRIES BEFORE MAKING ANY DECISIONS. FLOOR COVERINGS INDICATED ARE FOR ILLUSTRATIVE PURPOSES ONLY AND MAY NOT ACCURATELY PORTRAY ACTUAL FLOOR COVERINGS OF THE PROPERTY. NO GUARANTEES ARE MADE REGARDING THE INFORMATION CONTAINED IN THIS PLAN AND NO LIABILITY FOR ANY INACCURACIES IS ACCEPTED.