



10 Rothbury Terrace, Pimpama

Family Comfort in a Prime Pimpama Location

Move your family here or add to your portfolio with this well-positioned family home in the thriving suburb of Pimpama. Offering modern comfort, low-maintenance living and a smart, functional layout, this property is perfect for homeowners or investors alike.

As you walk through the entry hall, the home opens up to a bright and spacious air-conditioned open-plan living and dining area - the true heart of the home. The adjoining kitchen features a gas cooktop, large corner pantry, and plenty of bench and cupboard space, making meal prep and entertaining effortless.


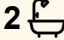
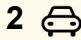
Step outside to a covered alfresco area overlooking a private, fully fenced backyard - ideal for weekend BBQs or a safe play space for kids and pets.

Property Features:

10 Rothbury Terrace, Pimpama
4 Bed | 2 Bath | 2 Car | 303m² block

- Master bedroom with ensuite (featuring large shower) and walk-in robe

All information contained therein is gathered from relevant third parties sources. We cannot guarantee or give any warranty about the information provided. Interested parties must rely solely on their own enquiries.

4  2  2 

FOR SALE
CONTACT AGENT

AGENTS

Liza Neuss
0447 006 098
liza@ljhgc.com.au

Nicole Hintz
0403 895 705
nhintz@ljhgc.com.au

AGENCY

LJ Hooker Ormeau
(07) 5549 4500



- Three additional bedrooms with built-in robes and ceiling fans
- Open-plan living and dining area with air conditioning
- Well-appointed kitchen with gas cooktop, ample storage and bench space
- Large family bathroom with separate bath and shower
- Separate internal laundry
- Covered outdoor entertaining area
- Fully fenced, low-maintenance backyard
- Double lock-up garage with internal access

Located just minutes from local schools, shops, parks and easy access to the M1 - everything your family needs is right here.

MORE DETAILS

Property ID	1YGPGW
Property Type	House
Land Area	303 m ²

Liza Neuss 0447 006 098

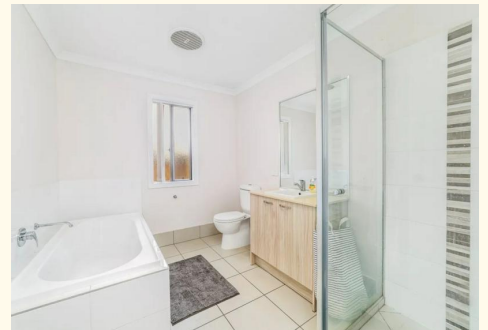
Sales Associate to Nicole Hintz Independent Contractor | liza@ljhgc.com.au

Nicole Hintz 0403 895 705

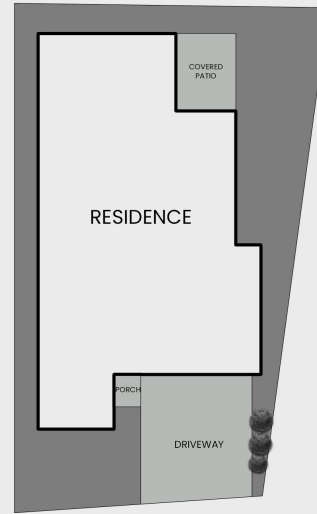
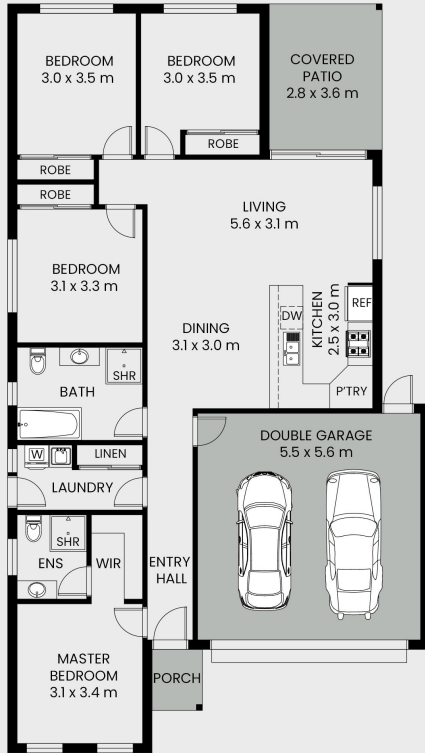
Director | L.R.E.A | Independent Contractor | nhintz@ljhgc.com.au

LJ Hooker Ormeau (07) 5549 4500

Unit 10 Norfolk Village Shopping Ctr, 170-174 Pascoe Road,
ORMEAU QLD 4208
ormeau.ljhooker.com.au | ormeau@ljhgc.com.au



10 Rothbury Terrace Pimpama



This floor plan including furniture, fixture measurements and dimensions are approximate and for illustrative purposes only. BoxBrownie.com gives no guarantee, warranty or representation as to the accuracy and layout. All enquiries must be directed to the agent, vendor or party representing this floor plan.

All information contained therein is gathered from relevant third parties sources. We cannot guarantee or give any warranty about the information provided. Interested parties must rely solely on their own enquiries.

