

Pimpama, 10 Kakadu Street

MUST BE SOLD!!! 3 LIVING AREAS AND BUTLERS!!!

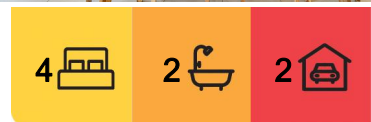
Welcome to 10 Kakadu Street, Pimpama! Nestled in the prestigious Gainsborough Greens community of Pimpama, this stunning steel-frame Metricon home offers an exceptional family living experience with no body corporate fees. Completed only recently, the residence blends timeless elegance with contemporary style, showcasing generous proportions, meticulous attention to detail, and a striking facade that exudes curb appeal. From its sunlit living areas to its refined finishes, this home is designed to impress.

Custom-built for family living, this home boasts multiple living zones, including a private lounge room, a light-filled living and dining area, and a separate kids' retreat. The four spacious bedrooms include a master wing with a luxurious ensuite and walk-in dressing robe.

The chef-inspired kitchen is designed to impress and cater to every need. Featuring an open layout, stone countertops, a spacious Butler's Pantry, and a 900mm oven and



Disclaimer: All information contained therein is gathered from relevant third parties sources. We cannot guarantee or give any warranty about the information provided. Interested parties must rely solely on their own enquiries.



For Sale
Contact Agent

View
ljhooker.com.au/AMJ0C

Contact
David Brown
0432 010 020
david.brown@ljhooker.com.au

Lucas Rupp
0406 249 324
lucas.rupp@ljhooker.com.au

LJ Hooker Oxenford
(07) 5632 8428

cooktop, it's perfect for preparing meals for any family gathering or event.

Features:

- Master Bedroom with Ensuite & Walk-in Robe
- Three Bedrooms with Ducted Air-con & built in-Robes
- Three distinct Living areas including a Kids retreat
- Office Nook
- Ducted Air-Conditioning all throughout the house
- Sheltered outdoor entertainment space
- Plumbed fridge cavity
- Low Maintenance backyard
- Double Car Garage with internal access
- 2022 Build by Metricon
- Solar 10kw
- Approx 417m2 Block

Location:

- Gainsborough State School 1.9km
- St Joseph's College 2.8km
- M1 3.6km
- Woolworths 700m
- Aquatic Centre 800m
- Gainsborough Greens Golf Club 1.6km
- Westfield 6km
- COSCO 6.1km

The Gainsborough Greens community is ideally located between Brisbane and the Gold Coast, offering easy access to both while providing a tranquil, family-friendly environment. The area features expansive open spaces, walking tracks, recreational facilities, and amenities, all bordering the renowned golf course that has hosted multiple Queensland PGA events and is considered one of the top courses in South-East Queensland.

Don't Miss this opportunity to make this beautiful property yours! With its prime location, superior craftsmanship, and thoughtful design, this home is the perfect place for a growing family to thrive in style and comfort.

Disclaimer:

We have in preparing this information used our best endeavours to ensure that the information contained herein is true and accurate, but accept no responsibility and disclaim all liability in respect of any errors, omissions, inaccuracies or misstatements that may occur. Prospective purchasers should make their own enquiries to verify the information contained herein.



LJ Hooker Oxenford
(07) 5632 8428

Disclaimer: All information contained therein is gathered from relevant third parties sources. We cannot guarantee or give any warranty about the information provided. Interested parties must rely solely on their own enquiries.

More About this Property

Property ID	AMJ0C
Property Type	House
Land Area	417 m ²

David Brown 0432 010 020

Principal | LREA | david.brown@ljhooker.com.au

Lucas Rupp 0406 249 324

Sales Associate to David Brown | lucas.rupp@ljhooker.com.au

LJ Hooker Oxenford (07) 5632 8428

13/5 Michigan Drive, OXENFORD QLD 4210

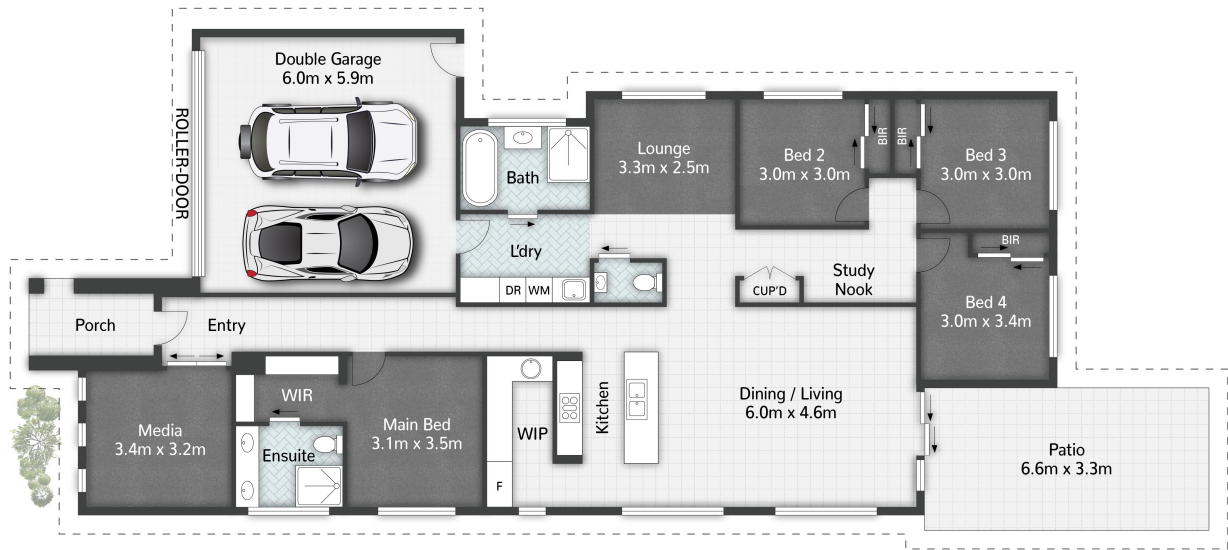
oxenford.ljhooker.com.au | oxenford@ljhooker.com.au



Disclaimer: All information contained therein is gathered from relevant third parties sources.

We cannot guarantee or give any warranty about the information provided. Interested parties must rely solely on their own enquiries.

LJ Hooker Oxenford
(07) 5632 8428



10 Kakadu Street PIMPAMA

4 Beds | 2 Baths | 2 Car Spaces | 225m²



All dimensions are approximate; they are subject to errors and inaccuracies and no liability will be accepted. Plans are shown for marketing purposes only.



LJ Hooker Oxenford
(07) 5632 8428

Disclaimer: All information contained therein is gathered from relevant third parties sources. We cannot guarantee or give any warranty about the information provided. Interested parties must rely solely on their own enquiries.