



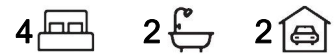
Pimpama, 10 John Crescent

Spacious Family Home that's a perfect start!

Welcome to your ideal family home! This Low-set brick and tile residence offers ample space and comfort, perfect for a growing family.

Key Features:-

- Four Spacious Bedrooms: Generous rooms with plenty of natural light.
- Master with ensuite, and a generous walk in robe.
- All Built ins- for easy hanging.
- Two Living Areas: Enjoy the flexibility of separate spaces for relaxation and entertainment.
- Well maintained Kitchen: Overlooking the rear yard, perfect for keeping an eye on the children while cooking
- Outdoor Entertaining: Undercover pergola ideal for the family gatherings or alfresco dining.
- Room for a Pool or PUTT PUTT Golf:- The large 600m2 block provides endless possibilities for outdoor fun.



For Sale

Offers Above \$845,000

View

ljhooker.com.au/42Z4GTJ

Contact

Laura Castelli

0418 607 520

lcastelli@ljhgc.com.au

LJ Hooker

Disclaimer: All information contained therein is gathered from relevant third parties sources.

We cannot guarantee or give any warranty about the information provided. Interested parties must rely solely on their own enquiries.

LJ Hooker Coomera
(07) 5585 7888

- Double Lock-up Garage: Secure parking with extra storage space.
- Comfort Features: Gas appliances, air conditioning, and ceiling fans for year-round comfort.
- Built approx 2013
- Ready to move in

Nestled in a lovely tree-lined street, this home is conveniently located to:

- Pimpama State Primary College and Pimpama State Primary
- Pimpama Junction Shopping Centre - Bunnings and take-away carvery and dine in cafes/restuarants
- Medical Centre
- M1 Motorway
- Gainsborough Green Golf Course

This property is the perfect first home or a wonderful place for a family to grow. Don't miss your chance to make it yours!

Contact Laura Castelli to make a viewing!

More About this Property

Property ID	42Z4GTJ
Property Type	House
House Size	184 m ²

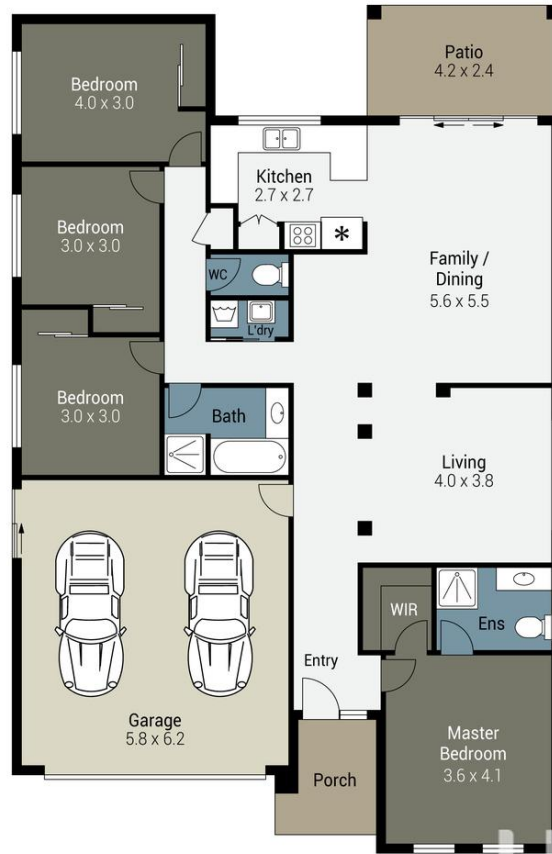
Laura Castelli 0418 607 520

Sales Specialist | lcastelli@ljhgc.com.au

LJ Hooker Coomera (07) 5585 7888

The Hub, 5/90 Days Road, UPPER COOMERA QLD 4209
 coomera.ljhooker.com.au | coomera@ljhgc.com.au





10 John Crescent, Pimpama

Internal: 184m² | External: 15m² | Total: 199m²

Bed - 4 | Bath - 2 | Car - 2

Plans shown are only indicative of layout. Dimensions are approximate.