



1 Litchfield Lane, Pimpama

EXPANSIVE MODERN FAMILY HAVEN WITH SUPERB OUTDOOR ENTERTAINING

Positioned within a favoured family community, this expansive double-storey residence delivers an impressive blend of space, style and lifestyle. Offering a sprawling layout with multiple living and dining options, it caters effortlessly to busy families and entertainers alike. Outside, a fabulous alfresco retreat takes centre stage, boasting covered entertaining zones, a sparkling swimming pool and a large backyard, while the home's prime location places schools, shops and everyday amenities just minutes away!

Timber-styled flooring and a soft neutral palette create a timeless backdrop for the expansive interior, with a multi-zoned layout perfectly suited to evolving family needs. Open-plan family and dining occupy the lower level, complemented by a plush media room and carpeted living room, while upstairs a generous rumpus provides an additional retreat. The kitchen impresses in both style and function, boasting abundant storage with a walk-in pantry, quality appliances, gas cooking and sleek stone benches centred around a large island.

Corner sliders open to an inviting outdoor entertaining zone with the

5 🚗 3 🛏 3 🚗

FOR SALE
CONTACT AGENT

AGENTS

Nicole Hintz
0403 895 705
nhintz@ljhgc.com.au

Liza Neuss
0447 006 098
liza@ljhgc.com.au

AGENCY

LJ Hooker Ormeau
(07) 5549 4500

All information contained therein is gathered from relevant third parties sources.
We cannot guarantee or give any warranty about the information provided.
Interested parties must rely solely on their own enquiries.

 **LJ Hooker**

covered and tiled patio perfect for relaxation. There is the ideal vantage over a sparkling in-ground swimming pool whilst a large fenced and flat yard provides superb space for children and pets to frolic!

Five built-in bedrooms are nestled privately on the upper level with a separate study downstairs offering options for a sixth if needed. Boasting dual walk-in wardrobes, the master bedroom also impresses with a private ensuite including a large dual-vanity whilst the family bathroom includes a separate bath. Additional features include a guest powder room, internal laundry, solar electricity and triple remote garaging.

Combining generous internal proportions with thoughtful design, this home provides exceptional space for daily family life and relaxed entertaining. Set in a quiet, leafy corner, it offers the perfect balance of tranquillity and convenience, with extensive shopping, dining, schools and transport options just minutes away!

- 616m²
- Expansive double-storey family residence in quiet leafy corner
- Sprawling layout with open-plan living and dining, separate carpeted media room, large plush living room and upstairs rumpus
- Modern kitchen with walk-in pantry, quality appliances, gas cooking and large stone island
- Covered and tiled alfresco entertaining overlooking sparkling in-ground pool with poolside lounging
- Large, flat, fenced yard ideal for children and pets
- Five built-in bedrooms plus separate study/sixth bedroom downstairs
- Air-conditioned master including dual walk-in robes and ensuite with huge vanity storage
- Family bathroom with separate bath plus guest powder room
- Internal laundry/solar electricity
- Triple remote garage with rear drive-through access - Double gate side access
- Prime location just minutes from schools, shopping, dining and transport

MORE DETAILS

Property ID	1YFWGWH
Property Type	House
House Size	367 m ²
Land Area	616 m ²
Including	Study Pool Dishwasher Outdoor Entertaining Built-in-Robes Remote Garage Solar Panels

Nicole Hintz 0403 895 705

Director | L.R.E.A | Independent Contractor | nhintz@ljhgc.com.au

Liza Neuss 0447 006 098

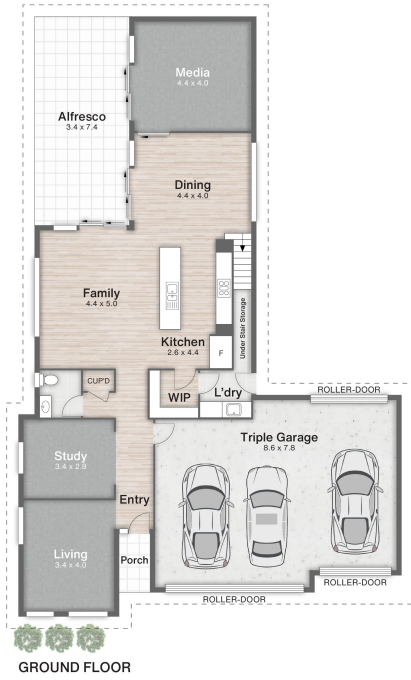
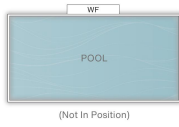
Sales Associate to Nicole Hintz Independent Contractor | liza@ljhgc.com.au

LJ Hooker Ormeau (07) 5549 4500

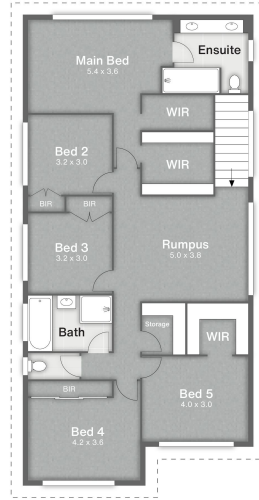
Unit 10 Norfolk Village Shopping Ctr, 170-174 Pascoe Road,
ORMEAU QLD 4208

ormeau.ljhooker.com.au | ormeau@ljhgc.com.au



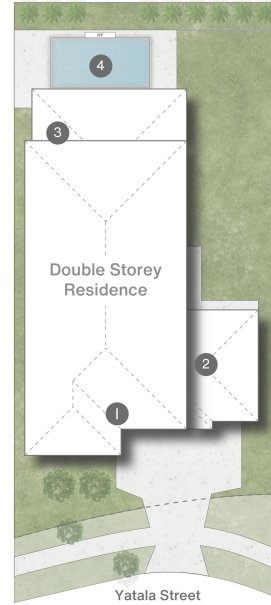


GROUND FLOOR



FIRST FLOOR

- 1 Porch
- 2 Garage
- 3 Alfresco
- 4 Pool



1 Litchfield Lane PIMPAMA

5 | 2.5 | 3 | 367m² | 616m²



DISCLAIMER
This is not a legal document; all measurements and dimensions are approximate and are subject to errors, omission or misstatement. No liability will be accepted. Plans are shown for marketing purposes only.