



1/28 Cranberrie Crescent, Pimpama

3  2  2 

Comfort Meets Convenience in a Quiet Pocket of Pimpama

Perfectly positioned in a quiet and highly sought-after pocket of Pimpama, this stylish and low-maintenance duplex offers an exceptional lifestyle opportunity for first home buyers, downsizers, and savvy investors alike.

Step inside to discover a beautifully presented home featuring a spacious open-plan design, modern finishes, and thoughtful upgrades-including new carpet and new blinds throughout.

Property Highlights

3 generous bedrooms with built-in robes

2 bathrooms

Master suite on the lower level complete with ensuite

Air conditioning to the lounge and master bedroom

Large, modern kitchen with generous fridge alcove and ample storage

New carpet and new blinds providing a fresh, modern feel

Tiled living areas and soft carpeted bedrooms

Fully fenced backyard offering privacy and security

Covered outdoor patio, perfect for relaxing or entertaining year-round

Why families love Pimpama

All information contained therein is gathered from relevant third parties sources.
We cannot guarantee or give any warranty about the information provided.
Interested parties must rely solely on their own enquiries.

FOR SALE

Offers over \$839,000

AGENTS

Mel Johnson

0406 336 133

mjohnson@ljhgc.com.au

AGENCY

LJ Hooker Coomera

(07) 5585 7888



Quick and easy access to the M1 motorway, making commuting a breeze

The newly opened Pimpama train station provides convenient transport and fast access to the beaches

Close to scenic walking trails and playgrounds

Walking distance to the Pimpama Sports Hub

Minutes from restaurants, childcare centres, schools, Bunnings, Westfield Coomera, Costco, Pimpama City Shopping Centre, and more

Enjoy the comfort of your air-conditioned living spaces or unwind in the private covered entertaining area-this home combines style, practicality, and convenience in one impressive package.

This one will be hot on the market-don't delay, move quickly!

Disclaimer: Photos were taken while the property was tenanted. Current lease ends 20/1/26 \$530/week. The market appraisal on renewal is \$720-\$750/week.

Whilst every effort has been made to ensure the accuracy of these particulars, no warranty is given by the owner or the agent. Interested parties should rely on their own enquiries and inspections.

MORE DETAILS

Property ID	43KRGTJ
Property Type	DuplexSemi-detached
House Size	108 m2
Land Area	166 m2
Including	Air Conditioning Courtyard Dishwasher Built-in-Robes

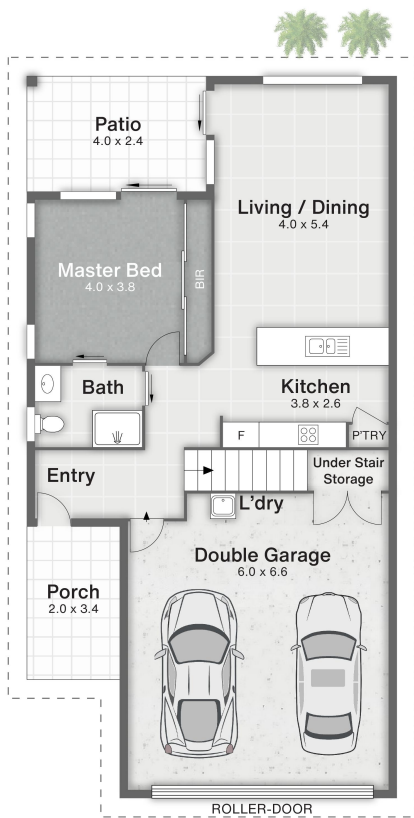
Mel Johnson 0406 336 133

Sales Specialist | mjohnson@ljhgc.com.au

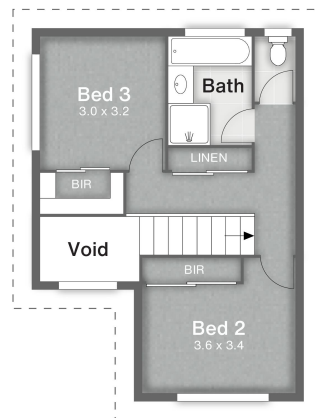
LJ Hooker Coomera (07) 5585 7888

The Hub, 5/90 Days Road, UPPER COOMERA QLD 4209
coomera.ljhooker.com.au | coomera@ljhgc.com.au





GROUND FLOOR



FIRST FLOOR



1/28 Cranberrie Crescent PIMPAMA

3 | 2 | 2 | 175m²

LJ Hooker

Coomera Ormeau Tamborine Mountain

All dimensions are approximate; they are subject to errors and inaccuracies and no liability will be accepted. Plans are shown for marketing purposes only.

All information contained therein is gathered from relevant third parties sources. We cannot guarantee or give any warranty about the information provided. Interested parties must rely solely on their own enquiries.

LJ Hooker