



Pimpama, 6 Winston Way

Nest or Invest!

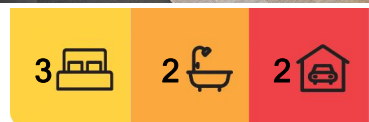
Modern, low-maintenance, and perfectly located —welcome to 6 Winston Way, Pimpama. This spacious and well-designed two-storey duplex offers the ideal blend of comfort, privacy, and functionality. A fantastic opportunity for first home buyers, downsizers, or investors looking to secure a quality property in a high-growth area.

Smart, flexible layout:

The master bedroom is located downstairs and features its own ensuite and built-in robe, creating a private retreat separate from the rest of the home. The open-plan living and dining area is filled with natural light and flows seamlessly to a private courtyard —perfect for relaxing or entertaining. A convenient powder room completes the lower level.

Upstairs, two additional bedrooms with built-in robes are serviced by a central modern bathroom —ideal for family, guests, or even a work-from-home setup.

With air-conditioning throughout, a double lock-up garage, and a low-maintenance design, this home is ready to move into or lease out immediately.



For Sale
Offers Over \$699,000

View
ljhooker.com.au/5GR1F41

Contact
Maxwell Hooper
0401 373 369
mhooper@ljhgc.com.au



Disclaimer: All information contained therein is gathered from relevant third parties sources. We cannot guarantee or give any warranty about the information provided. Interested parties must rely solely on their own enquiries.

LJ Hooker Nerang
(07) 5581 4422

Property Features:

- * Master bedroom downstairs with ensuite and built-in robe
- * 2 bedrooms upstairs with built-in robes
- * Kitchen overlooking the courtyard and dining area with great natural light
- * Air-conditioning throughout
- * Downstairs powder room
- * Private, easy-care courtyard
- * Double lock-up garage
- * Great investment or first home in a thriving suburb

Additional approximate fees:

Water \$300.00 Quarterly

Rates \$1300.00 Biannually.

Spilt insurance \$1,120.00 Annually

Location Highlights:

- * Close to a number of parks, walking trails, and green spaces
- * Short distance to local cafés, shopping hubs, and childcare centres
- * 7-minute drive to King's Christian College
- * Just minutes to Pimpama City Shopping Centre & Gainsborough Greens Golf Course
- * Easy access to the M1 for commuting to Brisbane or the Gold Coast

More About this Property

Property ID	5GR1F41
Property Type	DuplexSemi-detached
House Size	121 m2

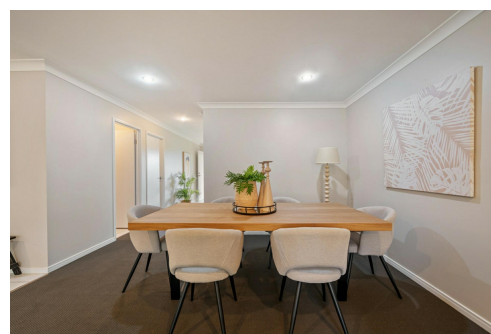
Maxwell Hooper 0401 373 369

Sales Specialist | mhooper@ljhgc.com.au

LJ Hooker Nerang (07) 5581 4422

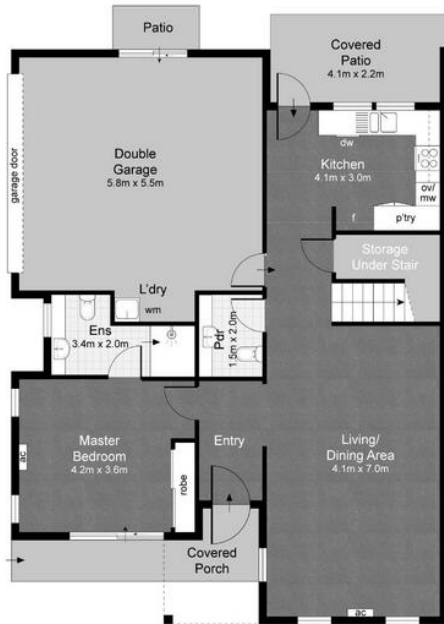
2-4 New Street, NERANG QLD 4211

nerang.ljhooker.com.au | nerang@ljhgc.com.au



Disclaimer: All information contained therein is gathered from relevant third parties sources. We cannot guarantee or give any warranty about the information provided. Interested parties must rely solely on their own enquiries.

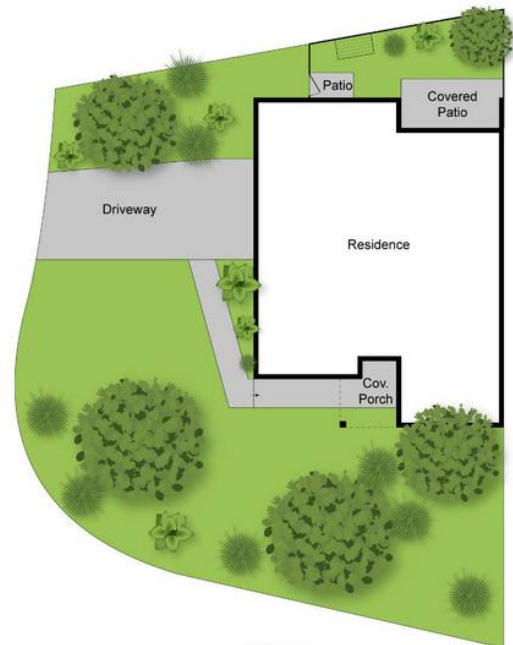
**LJ Hooker Nerang
(07) 5581 4422**



GROUND FLOOR



FIRST FLOOR



SITE PLAN

6 WINSTON WAY, PIMPAMA

3 2.5 2

Internal: 118m² | External: 56m² | Total: 174m²

Scale in meters. Indicative only. Dimensions are approximate.
All information contained herein is gathered from sources we believe to be reliable.
However, we cannot guarantee its accuracy and interested persons should rely on their own enquiries.