

5 Quessada Court, Pimpama

DUPLEX PAIR - INVESTOR GOLD

A rare opportunity to secure an entire duplex pair located in a peaceful Pimpama cul-de-sac - perfect for investors chasing strong returns or families seeking flexible dual-living.

Well-maintained, low-maintenance and cleverly laid out, this property offers two separate residences on one title, providing exceptional versatility.

UNIT 1 - Spacious 3 Bedroom Home

- 3 generous bedrooms
- Master suite with ensuite & walk-in robe
- Main bathroom with bathtub + separate toilet
- Large kitchen with excellent storage
- Spacious open-plan living and dining
- Single lock-up garage
- Good-sized fenced backyard
- maintenance finishes throughout

UNIT 2 - 1 Bedroom home

- 1 bedroom with walk-in robe

4 🏠 3 🚿 2 🚗

FOR SALE

Offers over \$1,200,000

AGENTS

Mel Johnson
0406 336 133
mjohnson@ljhgc.com.au

AGENCY

LJ Hooker Coomera
(07) 5585 7888

All information contained therein is gathered from relevant third parties sources.
We cannot guarantee or give any warranty about the information provided.
Interested parties must rely solely on their own enquiries.



Ensuite bathroom
Open-plan kitchen, dining & living
Secure private backyard
Filled with natural light

This is the ideal setup for rental income, multi-generational living, or an owner-occupier plus investment arrangement. With both units offering privacy, practicality and modern comfort, opportunities like this are rarely available.

Currently lease details are
Unit 1, lease ends 27/4/26 @\$620/week and Unit 2, 23/2/26 @ \$500/week
Market Appraisal is \$700-\$740/week for Unit 1 and Unit 2
\$520-\$550/week

Don't miss your chance to secure a flexible, high-performing asset in a quiet and convenient location.

Why people love living in Pimpama:

- The M1 motorway is close by which makes commuting so much easier
 - Pimpama train station has just opened, making access to the beaches so easy
 - Situated close to walking trails and playgrounds
 - It is walking distance to the Pimpama Sports Hub
 - It is close to restaurants, childcare centres, schools, Bunnings, Westfield Coomera, Costco, Pimpama City shopping centre and so much more.
- Disclaimer: The photos used are taken while tenanted. Unit 1, lease ends 27/4/26 @\$620/week and Unit 2, 23/2/26 @ \$500/week.
- Whilst every effort has been made to ensure the accuracy of these particulars, no warranty is given by the owner or the agent as to their accuracy. Interested parties should not rely on these particulars as representations of fact but must instead satisfy themselves by inspection or otherwise.

MORE DETAILS

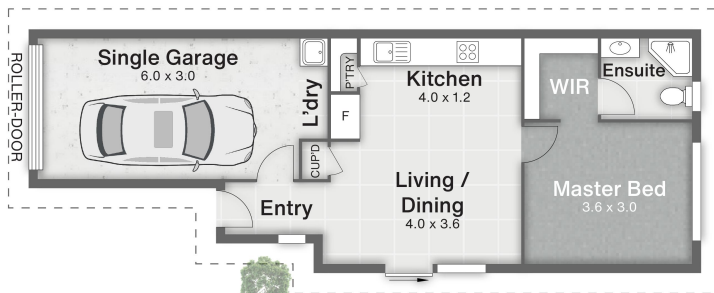
Property ID	43JWGTJ
Property Type	DuplexSemi-detached
House Size	190 m2
Land Area	491 m2
Including	Toilets (3)

Mel Johnson 0406 336 133
Sales Specialist | mjohnson@ljhgc.com.au

LJ Hooker Coomera (07) 5585 7888
The Hub, 5/90 Days Road, UPPER COOMERA QLD 4209
coomera.ljhooker.com.au | coomera@ljhgc.com.au



UNIT 1



UNIT 2



5 Quessada Court PIMPAMA

4 | 3 | 2 | 190m²



Coomera Ormeau Tamborine Mountain

All dimensions are approximate; they are subject to errors and inaccuracies and no liability will be accepted. Plans are shown for marketing purposes only.

All information contained therein is gathered from relevant third parties sources. We cannot guarantee or give any warranty about the information provided. Interested parties must rely solely on their own enquiries.

