



LJ Hooker



LJ Hooker



LJ Hooker



LJ Hooker

Pimlico, 2 Latchford Street

DO A LITTLE WORK AND REAP THE REWARDS.....

This is the first time in twenty years this family home has been offered to market!

Loaded with potential, this high-set four bedroom property has the makings of a great family home while enjoying a low maintenance lifestyle perfect for an owner occupier or a savvy investor with it's prime location and endless possibilities this property is ideal for those looking to add value and customise their dream home.

Key Features:

- High-set four bedroom home
- Generous space with the opportunity to add an ensuite
- Open-plan kitchen, dining, and living area
- Solid hardwood floors throughout
- Bathroom off the kitchen
- Master bedroom with its own private balcony



Disclaimer: All information contained therein is gathered from relevant third parties sources. We cannot guarantee or give any warranty about the information provided. Interested parties must rely solely on their own enquiries.



For Sale
Offers over \$450,000

View
ljhooker.com.au/3NEHWK

Contact
Suzanne Coverlid
0439 032 210
suzanne.coverlid@ljhooker.com.au

LJ Hooker Townsville
07 44262125

- Spacious kitchen layout
- Single carport under the roofline

Set in an ideal location within walking distance to Castletown shopping Centre and public transport.

More About this Property

Property ID	3NEHWK
Property Type	House
Land Area	531 m2

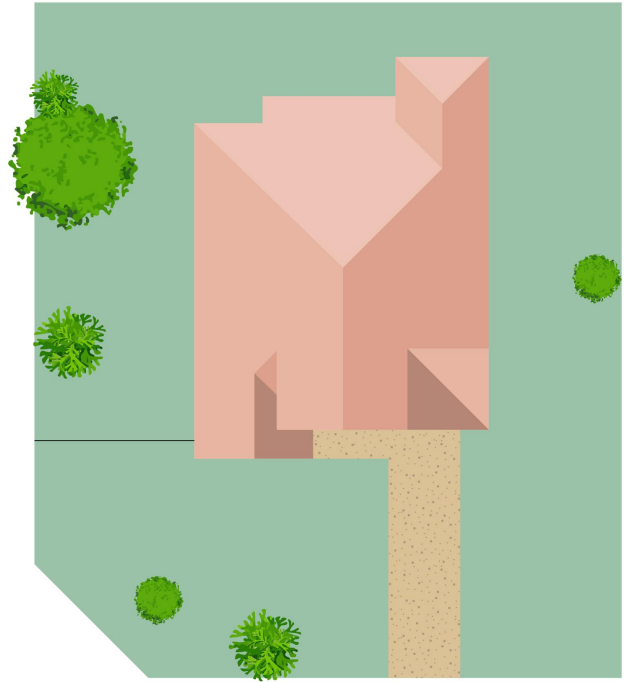
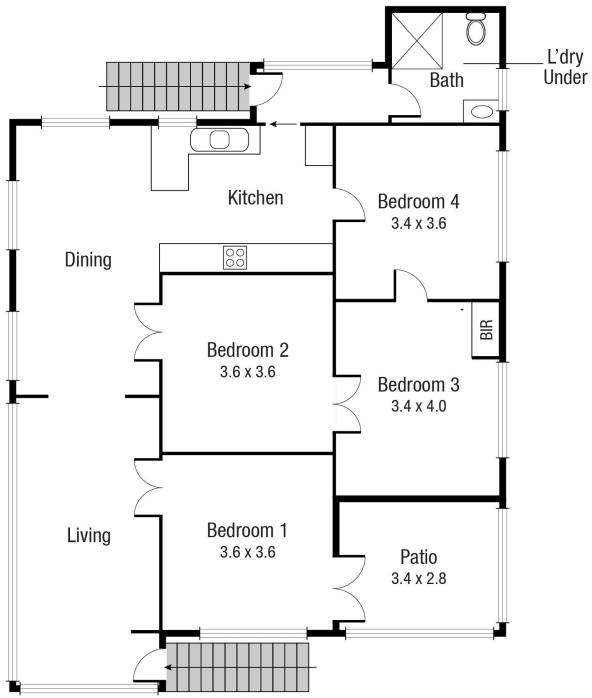
Suzanne Coverlid 0439 032 210
Sales Consultant | suzanne.coverlid@ljhooker.com.au

LJ Hooker Townsville 07 44262125
Shop 18/39 Eyre Street, NORTH WARD QLD 4810
townsville.ljhooker.com.au | townsville@ljhooker.com.au



LJ Hooker Townsville
07 44262125

Disclaimer: All information contained therein is gathered from relevant third parties sources. We cannot guarantee or give any warranty about the information provided. Interested parties must rely solely on their own enquiries.



Scale in metres. Indicative only. Dimensions are approximate. All information contained herein is gathered from sources we believe to be reliable. However we cannot guarantee its accuracy and interested persons should rely on their own enquiries.

TOTAL AREA : 105.5 sq.m

2 Latchford Street, Pimlico