



58 Thomas Street, Picnic Point

## Grevillea Cottage —Country Charm, Contemporary Living & Future Potential

Red Carpet Event | Wednesday 25th Feb at Revesby Workers Club (2B Brett St, Revesby) at 6:30pm. Registrations from 6:00pm.

Grevillea Cottage is the perfect fusion of country charm and contemporary comfort, set on approximately 581sqm with a generous 15.24m frontage. Framed by a classic bullnose veranda, this beautifully updated tri-level cottage instantly feels like home. From the moment you arrive, the warmth, character and thoughtful modern upgrades set the tone for a property that delivers far more than first impressions suggest.

Designed for real living, the home offers multiple living zones and a versatile layout ideal for growing families, multi-generational living or those seeking in-law accommodation options. The substantial land size and wide frontage unlock genuine potential for a duplex development or a granny flat (STCA), positioning this property as both a lifestyle buy and a strategic investment. Located within the highly regarded Picnic Point Public School catchment, the address adds further long-term appeal.

4 2 2

### AUCTION

Wed 25th Feb @ 6:30PM

### AGENTS

David Loaney

0412 257 476

David.loaney@ljhooker.com.au

### AGENCY

LJ Hooker Padstow

(02) 9771 1177

All information contained therein is gathered from relevant third parties sources.  
We cannot guarantee or give any warranty about the information provided.  
Interested parties must rely solely on their own enquiries.

LJ Hooker



Outdoors is where Grevillea Cottage truly excels. An entertainer's haven, the rear of the property opens to jarrah decking, a covered patio and a sparkling saltwater in-ground swimming pool. A separate pool house or teenage retreat enhances flexibility, while level lawns and landscaped gardens provide space to relax, entertain and enjoy. This is a home that works hard for your lifestyle today - with clear upside for the future.

#### Key Features:

- Approx. 581sqm land holding with wide 15.24m frontage
- Charming bullnose veranda with timeless country appeal
- Modernised tri-level cottage with multiple living spaces
- Versatile layout with in-law accommodation potential
- Duplex or granny flat potential (STCA)
- Jarrah rear decking and covered outdoor entertaining patio
- Saltwater in-ground swimming pool with separate pool house/retreat
- Plantation shutters, skylights, laundry chute & underfloor heating in main bathroom

If you want character, flexibility and future value - Grevillea Cottage stands apart.

Disclaimer: All information contained herein is gathered from sources we believe reliable. We have no reason to doubt its accuracy, however we cannot guarantee it. All interested parties should make and rely upon their own enquiries.

#### MORE DETAILS

Property ID	XTMFAE
Property Type	House
Land Area	581 m2

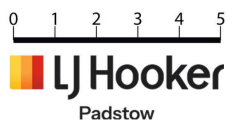
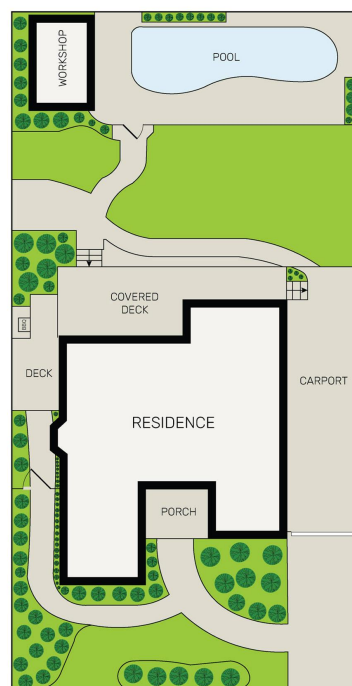
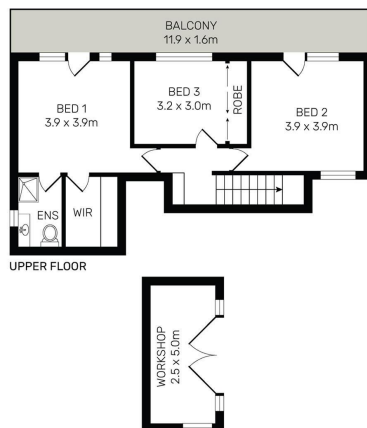
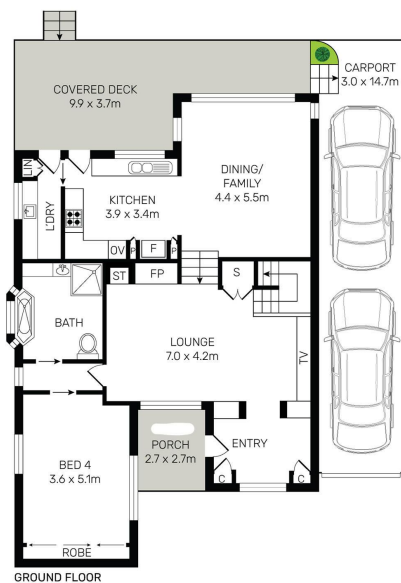
**David Loaney 0412 257 476**

Sales Agent | [David.loaney@ljhooker.com.au](mailto:David.loaney@ljhooker.com.au)

**LJ Hooker Padstow (02) 9771 1177**

2 Padstow Parade, PADSTOW NSW 2211  
[padstow.ljhooker.com.au](mailto:padstow.ljhooker.com.au) | [reception.padstow@ljhooker.com.au](mailto:reception.padstow@ljhooker.com.au)





58 Thomas Street, Picnic Point

All information contained herein is gathered from all sources we believe to be reliable. However we cannot guarantee its accuracy and interested parties should rely on their own enquiries.

(02) 9771 1177