




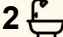
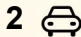
24 Donald Street, Picnic Point

Modern Comfort Meets Effortless Living

Red Carpet Event | Wednesday 19th November at Revesby Workers Club (2B Brett St, Revesby) at 6:30pm. Registrations from 6:00pm.

This beautifully presented dual-level duplex combines modern comfort, space, and style, offering a premium lifestyle opportunity for families and investors alike. Positioned in a convenient, well-connected pocket just a 5-minute drive to Panania train station and shops, this home delivers low-maintenance living without compromise - perfect for those seeking quality, comfort, and practicality in one impressive package.

The lower level showcases a bright and open floorplan where the spacious living and dining zones flow effortlessly into a sleek, updated kitchen. Complete with an island bench, stainless-steel appliances, and generous storage, this kitchen is the true heart of the home. Glass sliders extend the living space to a covered alfresco entertaining area, perfect for year-round gatherings, overlooking a private, low-maintenance rear yard. Internal access from a lock-up garage adds convenience and security, completing the picture of smart, easy living.

3  2  2 

FOR SALE
\$1,270,000

AGENTS

James Trivor
0422 696 125
james.trivor@ljhooker.com.au

Phillip Botonis
0426463228
phillip.botonis@ljhooker.com.au

AGENCY

LJ Hooker Padstow
(02) 9771 1177

All information contained therein is gathered from relevant third parties sources.
We cannot guarantee or give any warranty about the information provided.
Interested parties must rely solely on their own enquiries.

 **LJ Hooker**

Upstairs, three generous bedrooms provide comfort and privacy, including a master suite with a walk-in robe and stylish ensuite. The updated main bathroom offers a touch of luxury with a separate shower and bath, complemented by floor-to-ceiling tiles. Ducted air conditioning throughout ensures comfort in every season. Currently leased for \$930 per week, with the rental market sitting around \$950—\$1,000, this property presents an outstanding investment or an ideal home for those seeking turnkey living in a thriving area.

Features You'll Love:

- Dual-level duplex combining comfort and contemporary design
- Three bedrooms, master with walk-in robe & ensuite
- Expansive open-plan living and dining area
- Updated kitchen with island bench & stainless-steel appliances
- Seamless flow to covered alfresco entertaining area
- Private, low-maintenance rear yard
- Updated main bathroom with separate bath & shower, tiled floor-to-ceiling
- Lock-up garage with internal access for added security and ease
- Ducted air conditioning throughout for year-round comfort
- " Only 5 minutes to Panania train station, shops & local amenities
- Currently leased at \$930 per week, with rental potential of \$950—\$1,000

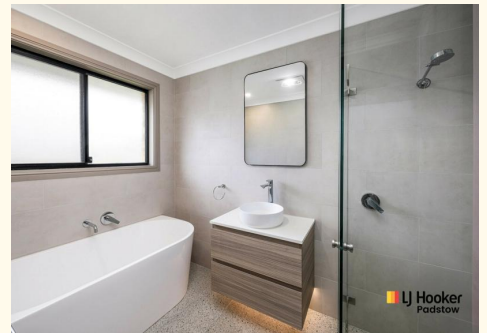
Disclaimer: All information contained herein is gathered from sources we believe reliable. We have no reason to doubt its accuracy, however we cannot guarantee it. All interested parties should make and rely upon their own enquiries.

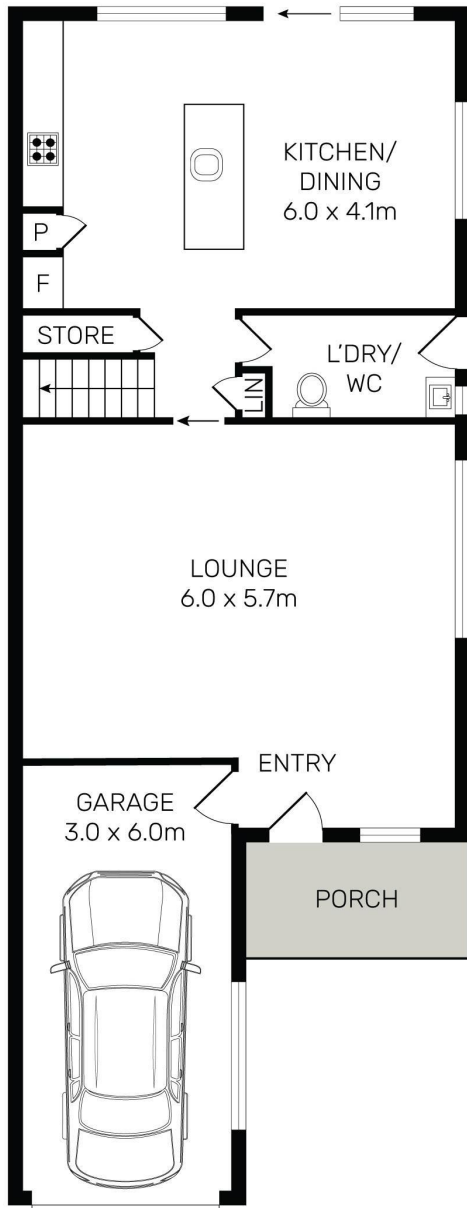
MORE DETAILS

Property ID	1EJWFAE
Property Type	DuplexSemi-detached
Land Area	278 m2
Including	Ensuite Air Conditioning Built-in-Robes Close to Schools Close to Shops Close to Transport

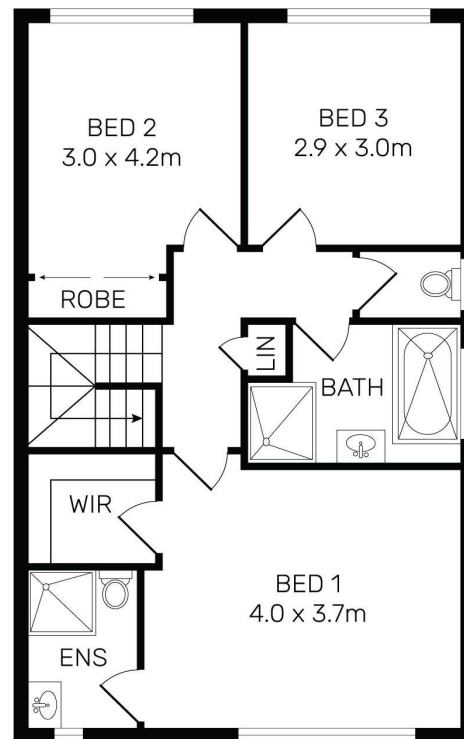
James Trivor 0422 696 125
 Sales Agent | james.trivor@ljhooker.com.au
Phillip Botonis 0426463228
 Sales Associate | phillip.botonis@ljhooker.com.au

LJ Hooker Padstow (02) 9771 1177
 2 Padstow Parade, PADSTOW NSW 2211
 padstow.ljhooker.com.au | reception.padstow@ljhooker.com.au

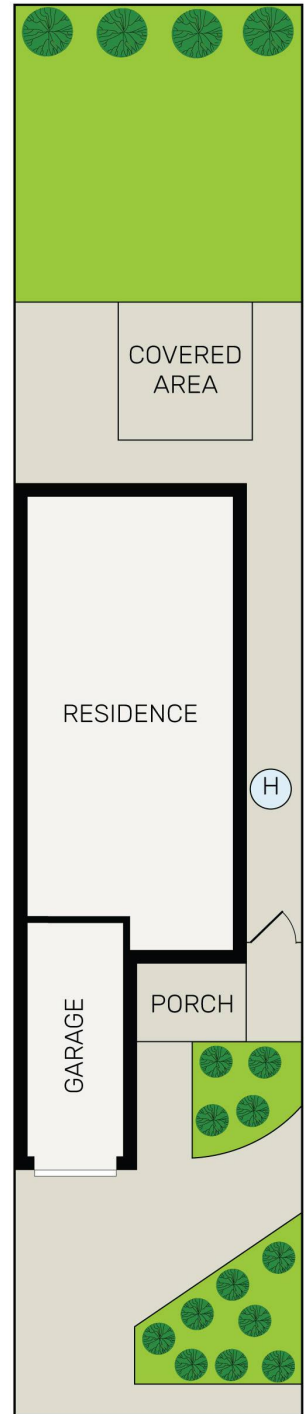




GROUND LEVEL



UPPER LEVEL



24 Donald Street, Picnic Point



All information contained herein is gathered from all sources we believe to be reliable. However we cannot guarantee its accuracy and interested parties should rely on their own enquiries.

(02) 9771 1177

All information contained therein is gathered from relevant third parties sources. We cannot guarantee or give any warranty about the information provided. Interested parties must rely solely on their own enquiries.

