

1509/1 Corinna Street, Phillip


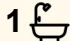
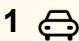
BRAND NEW AND BURSTING WITH INCLUSIONS

Sleek, stylish and as new, a creation of award winning Doma and Bloc groups, this outstanding apartment combines style and functionality to create sophisticated, life-enriching spaces you'll want to come home to.

Generous sized windows and a sunny aspect amplify the living space within a well-designed open plan layout. The modern kitchen boasts stone benchtops, electric cooking, dishwasher & good storage. The spacious living and dining areas are enhanced by access to the balcony area with sweeping views to Mt Taylor.

The bedroom has been designed with space and style in mind. Rare for a one-bedroom apartment, the bedroom includes a spacious walk in robe, plus corner windows optimising natural light, and balcony access embracing the same stunning views of the surrounding hills. The bathroom is conveniently adjacent to the bedroom, with feature tiling, floating vanity with storage and large walk-in shower.

Additional features include ducted heating and cooling throughout, also rare for an apartment, plus separate concealed laundry plus secure carspace and storage cage.

1  1  1 

FOR SALE
\$465,000+

VIEW
By Appointment

AGENTS
Jane Macken
0408 662 119
jane.macken@ljhwodenweston.com.au

Emma Irwin
04224 15008
emma.irwin@ljhwodenweston.com.au

AGENCY
LJ Hooker Woden | Weston
(02) 6288 8888

All information contained therein is gathered from relevant third parties sources. We cannot guarantee or give any warranty about the information provided. Interested parties must rely solely on their own enquiries.

 **LJ Hooker**

Residents at The Melrose enjoy access to an impressive suite of amenities, including:

- 25m heated lap pool with sun lounges
- Rooftop gym with panoramic views
- Private residents' lounge and outdoor entertaining terraces with BBQ facilities
- Bike storage and wash bay for cycling enthusiasts

Built with sustainability in mind, The Melrose features double glazing for comfort and noise reduction, energy-efficient lighting and appliances and water-saving rainwater irrigation for landscaped areas. Within walking distance to Woden Town Centre, the CIT and bus interchange, plus moments from The Canberra Hospital and easy access into the City and Parliamentary Triangle, convenience and lifestyle combine to create your perfect new address. Currently tenanted at \$510 per week until January 2026, this home provides for an ideal investment, or the ultimate first home or downsize opportunity.

- Sweeping views from the 15th floor
- Open plan living & dining
- Sleek kitchen with stone benchtops, electric cooking, dishwasher & good storage
- Spacious bedroom with walk in robe and balcony access
- Reverse cycle heating and cooling for year-round comfort
- European laundry with separate washer & dryer
- Large corner balcony with views
- 1 secure carpark & storage cage with lift access

Living Size: 59m²

Balcony Size: 8m²

Rates: \$1,587.92 p.a (approx.)

Land Tax: \$1,844.39 p.q (approx.)

Body Corporate: \$719.57 p.q (approx.)

Construction: 2024

EER: 6.0

MORE DETAILS

Property ID	JGVH5W
Property Type	Apartment
House Size	67 m ²
EER	6

Jane Macken 0408 662 119

Franchise Owner, Licensee, Licensed Agent ACT/NSW |
jane.macken@ljhwodenweston.com.au

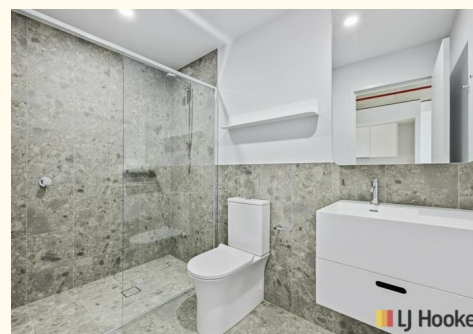
Emma Irwin 0422415008

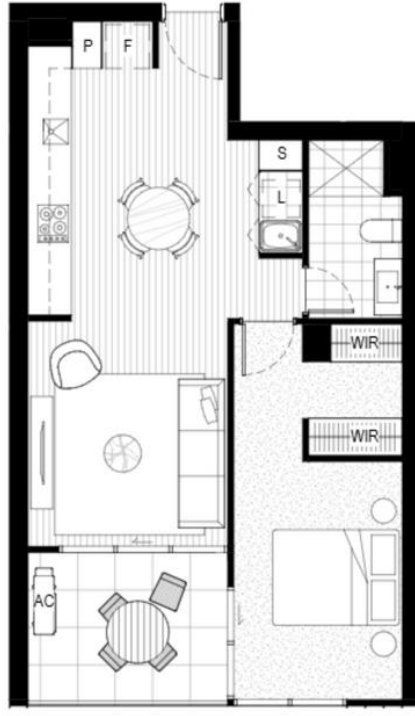
Sales Consultant to Jane Macken |
emma.irwin@ljhwodenweston.com.au

LJ Hooker Woden | Weston (02) 6288 8888

23 Brierly Street, WESTON CREEK ACT 2611

westoncreek.ljhooker.com.au | reception@ljhwodenweston.com.au





The floor plan is not to scale; measurements are indicative and in metres. Exterior elements are not in position. Plans should not be relied on. Interested parties should make and rely on their own enquiries.