



Phillip, 1/1 Surprise Place

Ground floor with abundance of natural light

Welcome to 1/1 Surprise Place —an ideal opportunity for first home buyers or savvy investors! Choose from two convenient entry points, whether through direct street access or internal access, offering flexibility and ease.

As you step inside, you'll be greeted by a spacious open-plan living and dining area that flows effortlessly across 70sqm of internal space, creating a bright and modern atmosphere.

The stylish kitchen is equipped with premium AEG appliances, a luxurious stone benchtop, a sleek white splashback, and abundant storage, making it the perfect space for any home chef.

Both bedrooms come with mirrored built-in robes, while the front bedroom enjoys direct access to the patio, basking in natural light.



Disclaimer: All information contained therein is gathered from relevant third parties sources. We cannot guarantee or give any warranty about the information provided. Interested parties must rely solely on their own enquiries.

2 

1 

2 

For Sale
\$585,000+

View
ljhooker.com.au/1TQ4FMF

Contact
Samuel Thompson
0412 300 774
samuel.thompson@ljhmanuka.com.au

EER ★★★★★★

LJ Hooker Manuka
(02) 6239 5551

The generously sized 28sqm patio is perfect for entertaining guests or unwinding in your private outdoor space. Additional features include double glazed windows, European laundry, reverse cycle heating & cooling, car space with storage cage & NBN connection ready.

Don't miss your chance to own this private, modern retreat —designed with lifestyle in mind!

Features include:

- Two access points: via the patio or internally
- Open-plan, light filled living/dining area
- 70sqm approx. of internal living
- 28sqm approx. of patio area
- Double glazed windows
- AEG electric cooktop and oven
- Stone benchtop with sleek splashback
- Mirrored built-in robes
- European laundry
- Reverse cycle heating & cooling
- Car space with storage cage
- NBN ready

EER: 6 stars

Strata: \$1131pq approx.

Rates: \$449pq approx.

Internal Area: 70sqm approx.

Courtyard Area: 28sqm approx.

Disclaimer: All information contained herein is gathered from external sources we consider to be reliable. However, we cannot guarantee or give any warranty about the information provided. Interested parties must solely rely on their own inquiries and satisfy themselves in all respects.

Disclaimer:

While all care has been taken in compiling information regarding properties marketed for rent or sale, we accept no responsibility and disclaim all liabilities regarding any errors or inaccuracies contained herein. All parties should rely on their own investigation to validate the information provided.



LJ Hooker Manuka
(02) 6239 5551

Disclaimer: All information contained therein is gathered from relevant third parties sources. We cannot guarantee or give any warranty about the information provided. Interested parties must rely solely on their own enquiries.

More About this Property

Property ID	1TQ4FMF
Property Type	Apartment
House Size	70 m ²
EER	6
Including	Air Conditioning Intercom Courtyard Built-in-Robes Liveability

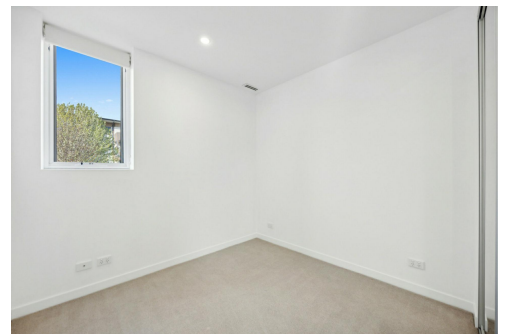
Samuel Thompson 0412 300 774

Property Consultant | samuel.thompson@ljhmanuka.com.au

LJ Hooker Manuka (02) 6239 5551

20 Bougainville Street, MANUKA ACT 2603

manuka.ljhooker.com.au | manuka@ljhmanuka.com.au



Disclaimer: All information contained therein is gathered from relevant third parties sources. We cannot guarantee or give any warranty about the information provided. Interested parties must rely solely on their own enquiries.

LJ Hooker Manuka
(02) 6239 5551



LJ Hooker
Manuka

Indicative only. Dimensions are approximate. All information contained herein is gathered from sources we believe to be reliable. However, we cannot guarantee its accuracy and interested persons should rely on their own enquiries.