



## Penna, 646 Shark Point Road

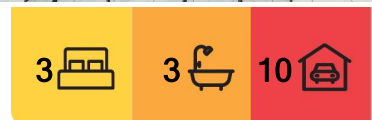
Penna - A Slice of Paradise...With Views To Brag About!

Ant's "Fluff-Free" Description...

- \* Views That'll Make Your Mates Jealous - Every room frames a stunning vista, perfect for Instagram shots or smug morning coffee moments.
- \* Spacious & Stylish Living - A modern 3-bedroom, 2-bathroom home with multiple living zones, so everyone gets their personal 'no-fly zone.'
- \* Luxury Finishes Throughout - Because life's too short for anything less than top-quality.
- \* Self-Contained Chalet - A freshly renovated, fully equipped 1-bedroom retreat. Perfect for guests, extended family, or that mate who always needs a place to crash.
- \* Sheds & Storage Galore - Plenty of space for your hobbies, projects, and those



**Disclaimer:** All information contained therein is gathered from relevant third parties sources. We cannot guarantee or give any warranty about the information provided. Interested parties must rely solely on their own enquiries.



**For Sale**  
Offers over \$995,000

**View**  
By Appointment

**Contact**  
**Ant Manton**  
0408 621 856  
antmanton@ljhookerpinnacle.com

**LJ Hooker Pinnacle Property**  
**(03) 6272 8177**

"essential" purchases you might have forgotten to mention to your partner.

- \* 26.5 Acres of Pure Freedom - Hobby farming? Four-wheeling? Just avoiding your neighbors? The choice is yours!
- \* Wildlife, Peace & Serenity - The only uninvited guests are the local critters... unless they start paying rent, in which case, we've got a deal!
- \* Energy-Efficient & Eco-Smart - Modern insulation, energy-saving features, and sustainable living that's as kind to your wallet as it is to the planet.
- \* Endless Possibilities - Live, rent, or launch your own alpaca farm (we won't judge). This property is ready for whatever adventure you dream up!
- \* Dual-Living Potential - Stay in the main house, rent out the chalet, and let your investment work for you. Work smarter, not harder!
- \* Privacy with a Capital 'P' - Your own secluded retreat, where the only noise is the sound of your own bad karaoke nights.

BONUS: The Perks of Penna!

- \* Country Bliss with City Convenience - Enjoy the peaceful rural lifestyle while being just a short drive to Hobart and Sorell. Tranquility and takeaway? Win-win!
- \* A Laid-Back, Friendly Community - Warm, welcoming neighbors who respect privacy-no unexpected pop-ins here!
- \* Fresh Local Produce at Your Doorstep - Keep your pantry stocked with farm-fresh goodness from nearby markets and growers.
- \* A truly rare opportunity to live, invest, or both - and do it all without breaking a sweat!
- \* Opportunities like this don't last-snap it up before someone else does!

Onwards and upwards to your very own slice of paradise!

"I Work Harder - It's That Simple!"

Disclaimer: The information contained herein has been supplied to us and we have no reason to doubt its accuracy, however, cannot guarantee it. Accordingly, all interested parties should make their own enquiries to verify this information.



**LJ Hooker Pinnacle Property**  
**(03) 6272 8177**

**Disclaimer:** All information contained therein is gathered from relevant third parties sources. We cannot guarantee or give any warranty about the information provided. Interested parties must rely solely on their own enquiries.



## More About this Property

<b>Property ID</b>	5WZ6FCS
<b>Property Type</b>	House
<b>House Size</b>	185 m2
<b>Land Area</b>	107300 m2
<b>Including</b>	Ensuite Toilets (3)

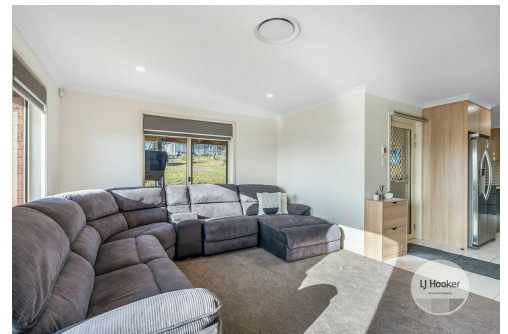
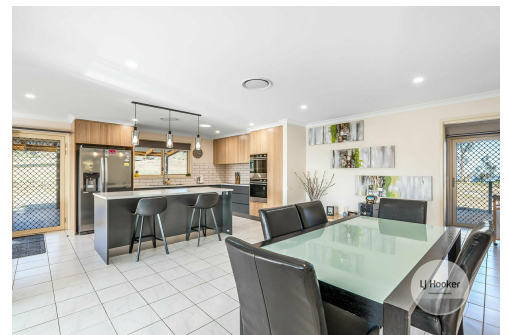
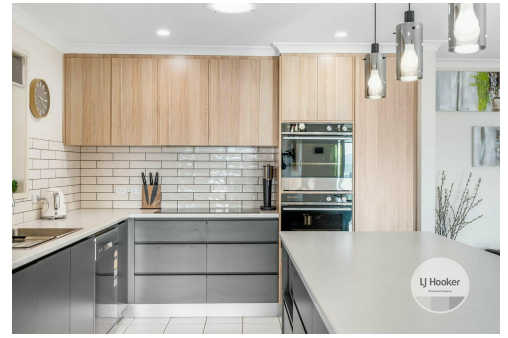
**Ant Manton 0408 621 856**

Real Estate Agent | [antmanton@ljhookerpinnacle.com](mailto:antmanton@ljhookerpinnacle.com)

**LJ Hooker Pinnacle Property (03) 6272 8177**

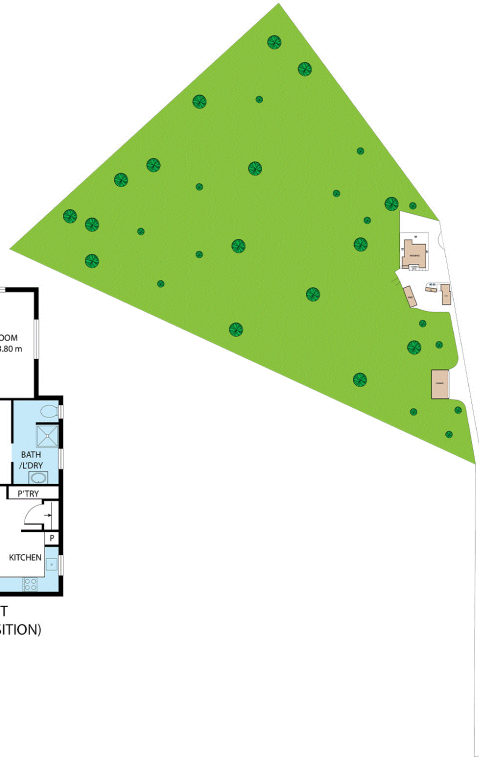
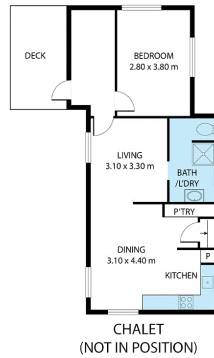
402 Main Road, GLENORCHY TAS 7010

[pinnacleproperty.ljhooker.com.au](http://pinnacleproperty.ljhooker.com.au) | [hello@ljhookerpinnacle.com](mailto:hello@ljhookerpinnacle.com)



**Disclaimer:** All information contained therein is gathered from relevant third parties sources. We cannot guarantee or give any warranty about the information provided. Interested parties must rely solely on their own enquiries.

**LJ Hooker Pinnacle Property**  
**(03) 6272 8177**



## 646 Shark Point Road, Penna

House area: 185 sqm

Areas and dimensions are approximate and therefore this floor plan should only be used for illustrative purposes.

Real Estate Marketing by [nextcreative.com.au](http://nextcreative.com.au)



**LJ Hooker Pinnacle Property**  
(03) 6272 8177

**Disclaimer:** All information contained therein is gathered from relevant third parties sources. We cannot guarantee or give any warranty about the information provided. Interested parties must rely solely on their own enquiries.