

Penna, 641 Shark Point Road

A virtual waterfront stunner

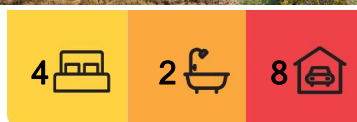
Ant's "Fluff-Free" Description

* 5 glorious acres of virtual waterfront - sun-drenched pasture with direct right-of-way to the water's edge. Perfect for launching the tinny, dropping a line, or simply soaking up the stillness.

* Architect-designed modern homestead - light-filled and beautifully proportioned, with views that stretch from Pittwater Estuary to Storm Bay and all the way to Mount Wellington.

* Grand-scale open-plan living - soaring ceilings, full-height glazing, and seamless flow to a wraparound deck that's made for sunset drinks and summer BBQs.

* Gourmet entertainer's kitchen - stone benchtops, premium appliances, deep storage... If Gordon Ramsay moved to Penna, this would be his domain.



For Sale
Expressions of Interest

View
By Appointment

Contact
Ant Manton
0408 621 856
antmanton@ljhookerpinnacle.com

Zac Flanagan
0466 685 937
zflanagan@ljhookerpinnacle.com



Disclaimer: All information contained therein is gathered from relevant third parties sources. We cannot guarantee or give any warranty about the information provided. Interested parties must rely solely on their own enquiries.

LJ Hooker Pinnacle Property Rentals
(03) 6272 8177

* 4 king-sized bedrooms - including a show-stopping master suite with walk-in robe and luxe ensuite. The other three? Equally impressive with built-ins and space to spare.

* Upstairs retreat/rumpus - a bonus living zone with elevated views - ideal for teens, guests, or a bit of grown-up peace and quiet.

* Detached 2-bedroom chalet - the ultimate in flexibility: Airbnb (STCA), extended family, or dreamy guest digs.

* Sheds, garages & storage galore - whether it's boats, tools, caravans, or hobbies, there's a spot for everything and then some.

* The Penna lifestyle you've been waiting for - peaceful, private, and just minutes to shops, schools, and the city.

This one's a unicorn - blink and you'll miss it.

Onwards and upwards to your Penna paradise!

"I Work Harder - It's THAT Simple!"

Disclaimer: The information contained herein has been supplied to us and we have no reason to doubt its accuracy, however, cannot guarantee it. Accordingly, all interested parties should make their own enquiries to verify this information.

More About this Property

Property ID	5XA9FCS
Property Type	House
House Size	251 m2
Land Area	20400 m2
Including	Ensuite Air Conditioning Toilets (2) Fire Place Courtyard Balcony Deck Outdoor Entertaining Floorboards Workshop Built-in-Robes Secure Parking

Ant Manton 0408 621 856

Real Estate Agent | antmanton@ljhookerpinnacle.com

Zac Flanagan 0466 685 937

Operations Manager to Ant Manton | zflanagan@ljhookerpinnacle.com

LJ Hooker Pinnacle Property Rentals (03) 6272 8177

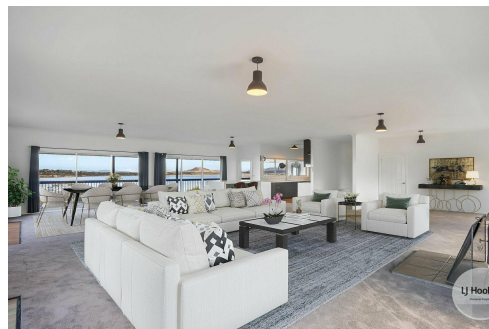
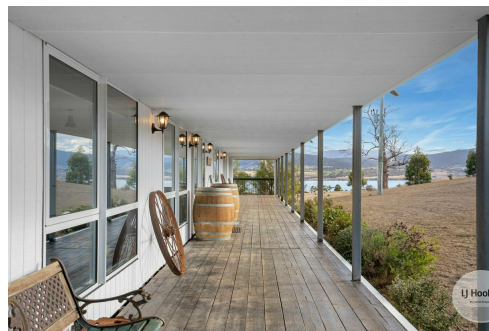
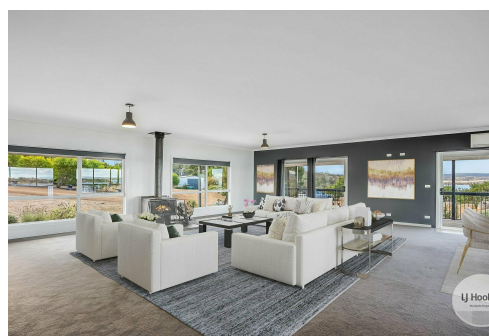
122 Murray Street, HOBART TAS 7000

pinnacleproperty.ljhooker.com.au | hello@ljhookerpinnacle.com



Disclaimer: All information contained therein is gathered from relevant third parties sources.

We cannot guarantee or give any warranty about the information provided. Interested parties must rely solely on their own enquiries.



**LJ Hooker Pinnacle Property Rentals
(03) 6272 8177**

