



## Peeramon, 282 Ball Road

Serene Acreage | Central Location

Ideally located between Malanda and Yungaburra and less than 15 kms from Atherton this beautiful property offers peace and quiet while remaining close to amenities such as schools, supermarkets, shops and parks.

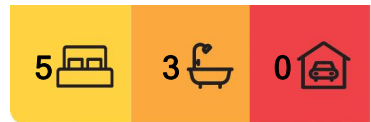
Upon entry to the property you are greeted with beautiful established trees and gardens, as well as veggie gardens to grow whatever you desire.

Large block shed is ideal for storage of vehicles or could double as a workshop, Additional work room/storage area is attached. The courtyard creates a charming space between the home and shed capturing the sunlight and providing a great area for entertaining.

The home itself offers 3 bathrooms and five spacious bedrooms, the main bedroom features a walk in wardrobe with large ensuite. Main living room showcases wood fireplace giving a warm atmosphere and ideal for the cooler winter nights. Second living area is



**Disclaimer:** All information contained therein is gathered from relevant third parties sources. We cannot guarantee or give any warranty about the information provided. Interested parties must rely solely on their own enquiries.



**For Sale**  
Offers Over \$670,000

**View**  
[ljhooker.com.au/SQHZE](http://ljhooker.com.au/SQHZE)

**Contact**  
**Alex Payne**  
0409 328 153  
[alex@ljhatherton.com](mailto:alex@ljhatherton.com)

**LJ Hooker Malanda**  
**(07) 4096 5446**

combined with secondary dining table and TV —ideal for the large family. Kitchen offers ample storage, large pantry and butcher block. Oven is built into cabinet for ease.

The rear of the home has a long veranda and looks out over the sprawling gardens. An array of trees provide privacy. Take a stroll around the ponds, spotting birds and local wildlife. Previously used for aquaculture there is a great opportunity to bring it back to life in another direction.

Key features:

- \*Established fruit trees
- \*Large block home, perfect for families
- \*Ample water including well
- \*Prime location

For more information please contact exclusive agent Alex Payne today on 0409 328 153.

## More About this Property

<b>Property ID</b>	SQHZE
<b>Property Type</b>	House
<b>Land Area</b>	2 hectare
<b>Including</b>	Courtyard Balcony

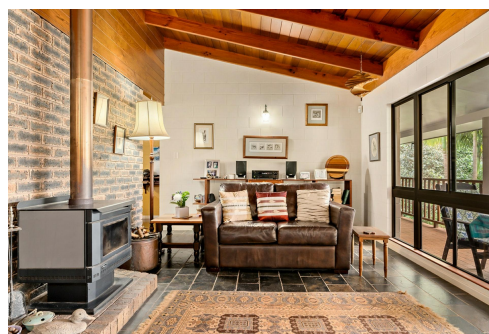
**Alex Payne 0409 328 153**

Property Sales Consultant | [alex@ljhatherton.com](mailto:alex@ljhatherton.com)

**LJ Hooker Malanda (07) 4096 5446**

45 James Street, MALANDA QLD 4885

[malanda.ljhooker.com.au](http://malanda.ljhooker.com.au) | [malanda@ljhmalanda.com](mailto:malanda@ljhmalanda.com)



**LJ Hooker Malanda  
(07) 4096 5446**

**Disclaimer:** All information contained therein is gathered from relevant third parties sources. We cannot guarantee or give any warranty about the information provided. Interested parties must rely solely on their own enquiries.



**"Quinkin Ponds" 282 Ball Rd, Pearamon**

The floorplan is not to scale; measurements are indicative and in metres. Exterior elements are not in position. Plans should not be relied on. Interested parties should make and rely on their own enquires.

Produced by **DIAKRIT**