



Paynesville, Unit 4/9-11 Wellington Street

DOWNTOWN CONVENIENCE - SPACIOUS UNIT STEPS FROM SHOPS & WATERFRONT

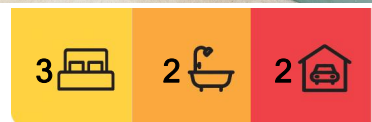
Perfectly positioned in the heart of town, this spacious three bedroom unit offers an unbeatable lifestyle with shops and the waterfront just moments away. A welcoming entry foyer leads into the open plan living area, bathed in northern light and overlooking beautifully maintained communal lawns and gardens. The carpeted sitting area seamlessly flows into the tiled meals and kitchen space, where sliding glass doors open to a covered outdoor area and private grassy courtyard ideal for relaxed living.

The well equipped kitchen features an electric wall oven, cooktop, dishwasher and island bench. The master bedroom includes a built-in robe and ensuite with a generous vanity and shower, while bedrooms two and three also offer built-in robes. A central bathroom with a bath and shower, separate toilet and electric heating/cooling provide year round comfort. Internal access to the garage completes the package.

With everything you need within a minutes' walk, this is the ultimate low maintenance lifestyle opportunity leave the car at home and enjoy the best of downtown living!



Disclaimer: All information contained therein is gathered from relevant third parties sources. We cannot guarantee or give any warranty about the information provided. Interested parties must rely solely on their own enquiries.



For Sale
Please Call

View
ljhooker.com.au/MERFCA

Contact
Lorraine Edlington
0437 532 860
ledlington.paynesville@ljhooker.com.au

**LJ Hooker Paynesville | Lakes
Entrance | Metung
(03) 5156 6166**

More About this Property

Property ID	MERFCA
Property Type	Unit
Including	Ensuite Air Conditioning Toilets (2) Dishwasher Outdoor Entertaining Built-in-Robes Remote Garage

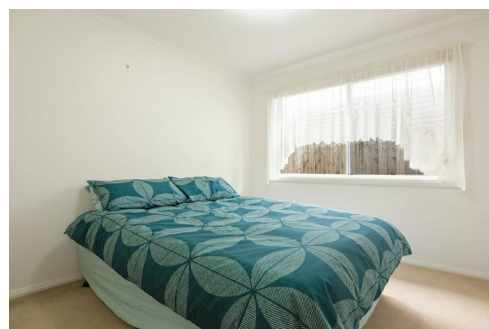
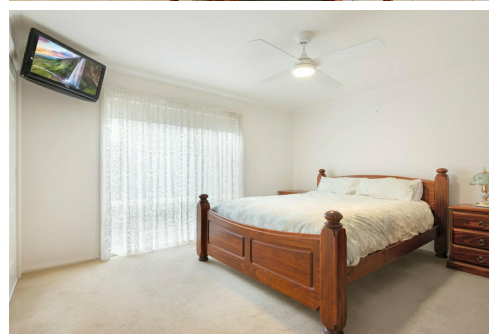
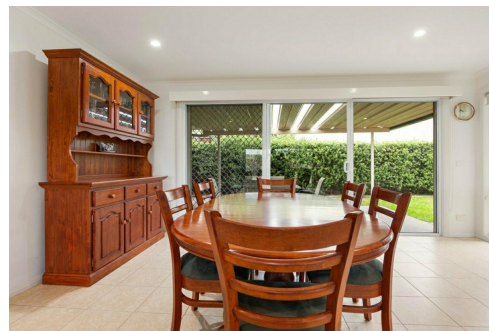
Lorraine Edlington 0437 532 860

Officer In Effective Control | Licensed Estate Agent |
 ledlington.paynesville@ljhooker.com.au

LJ Hooker Paynesville | Lakes Entrance | Metung (03) 5156 6166

25A Esplanade, PAYNESVILLE VIC 3880

paynesville.ljhooker.com.au | paynesville@ljhooker.com.au



Disclaimer: All information contained therein is gathered from relevant third parties sources.
 We cannot guarantee or give any warranty about the information provided. Interested parties must rely solely on their own enquiries.

**LJ Hooker Paynesville | Lakes
 Entrance | Metung
 (03) 5156 6166**