



Unit 2/1 Rex Street, Paynesville


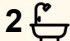
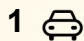
EASY CARE LIVING WITH SUNNY NORTH FACING APPEAL

Beautifully maintained and perfectly positioned on a low maintenance allotment, this inviting home offers a relaxed lifestyle with all the comforts in place. The spacious open plan living area enjoys a desirable northern aspect, filling the home with natural light and seamlessly extending to a covered outdoor entertaining area, ideal for year round enjoyment.

The well appointed kitchen features electric cooking, a dishwasher and a generous walk-in pantry, making everyday living both practical and convenient. Three good sized bedrooms provide comfortable accommodation, with the master suite complete with a walk-in robe and private ensuite, while a central bathroom and separate toilet service the remainder of the home.

Quality carpets and stylish vinyl plank flooring, the home also includes split system heating and cooling for year round comfort. Additional features include internal access to the garage, solar electric hot water, a garden shed and easy care gardens that enhance the home's low maintenance appeal.

An excellent opportunity for downsizers, first home buyers, or investors seeking a move in ready property in a neat and tidy setting.

3  2  1 

FOR SALE

Please Call

AGENTS

Lorraine Edlington

0437 532 860

ledlington.paynesville@ljhooker.com.au

AGENCY

LJ Hooker Paynesville | Lakes Entrance

| Metung

(03) 5156 6166

All information contained therein is gathered from relevant third parties sources.

We cannot guarantee or give any warranty about the information provided.

Interested parties must rely solely on their own enquiries.

 **LJ Hooker**

MORE DETAILS

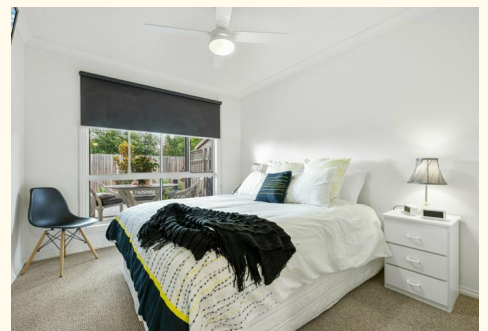
Property ID	MTPFCA
Property Type	Unit
Land Area	447 m2
Including	Ensuite
	Toilets (2)
	Dishwasher
	Outdoor Entertaining
	Built-in-Robes
	Remote Garage

Lorraine Edlington 0437 532 860

Officer In Effective Control | Licensed Estate Agent |
ledlington.paynesville@ljhooker.com.au

LJ Hooker Paynesville | Lakes Entrance | Metung (03) 5156 6166

25A Esplanade, PAYNESVILLE VIC 3880
paynesville.ljhooker.com.au | paynesville@ljhooker.com.au



All information contained therein is gathered from relevant third parties sources.
We cannot guarantee or give any warranty about the information provided.
Interested parties must rely solely on their own enquiries.