

Paynesville, 99 Langford Parade

CONTEMPORARY TOWNHOUSE LIVING: WALK TO SHOPS, RESTAURANTS & WATERFRONT

Discover the epitome of modern living in this stylish townhouse, perfectly positioned within walking distance to shops, restaurants, and the waterfront. Featuring high ceilings and a sunlit north facing open plan living area, this home seamlessly connects indoor and outdoor spaces for relaxed entertaining. The kitchen is a chef's dream with stone benchtops, a 900mm gas/electric stove, and a dishwasher.

The spacious master bedroom boasts a walk-in robe and a sleek ensuite in modern grey tones, while two additional bedrooms offer built-in robes. A stylish bathroom, separate powder room, and laundry add to the home's practicality. Enjoy internal access to the double garage, complete with a roller door at the rear for easy access to the courtyard. With its own driveway and a partially fenced front yard that can be fully enclosed if desired, this townhouse also offers split system heating and cooling for year round comfort. Don't miss this opportunity for convenient, contemporary living close to all amenities!



For Sale
Please Call

View
ljhooker.com.au/M7WFCA

Contact
Lorraine Edlington
0437 532 860
ledlington.paynesville@ljhooker.com.au



Disclaimer: All information contained therein is gathered from relevant third parties sources. We cannot guarantee or give any warranty about the information provided. Interested parties must rely solely on their own enquiries.

LJ Hooker Paynesville | Lakes Entrance | Metung
(03) 5156 6166

More About this Property

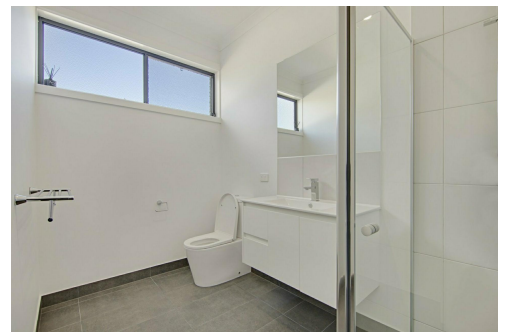
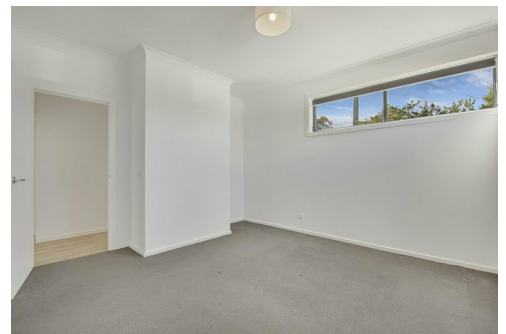
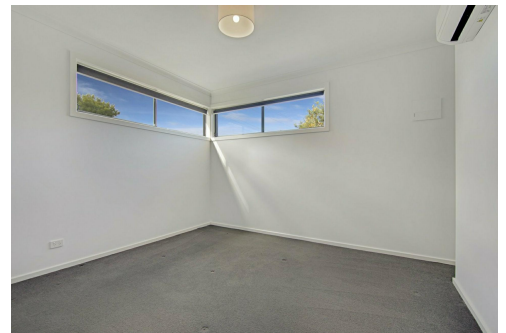
Property ID	M7WFCA
Property Type	Unit
Land Area	322 m2
Including	Ensuite Air Conditioning Toilets (2) Dishwasher Outdoor Entertaining Built-in-Robes Remote Garage Solar Hot Water

Lorraine Edlington 0437 532 860

Officer In Effective Control | Licensed Estate Agent |
ledlington.paynesville@ljhooker.com.au

LJ Hooker Paynesville | Lakes Entrance | Metung (03) 5156 6166

25A Esplanade, PAYNESVILLE VIC 3880
paynesville.ljhooker.com.au | paynesville@ljhooker.com.au



Disclaimer: All information contained therein is gathered from relevant third parties sources.
We cannot guarantee or give any warranty about the information provided. Interested parties must rely solely on their own enquiries.

**LJ Hooker Paynesville | Lakes
Entrance | Metung
(03) 5156 6166**