

Paynesville, 1A/28-30 Main Road

STYLISH REFURBISHED UNIT IN PRIME DOWNTOWN LOCATION

Perfectly positioned just a five minute walk from the shops and waterfront, this stylish refurbished and fully furnished unit offers a convenient and low maintenance lifestyle. The open plan living area features a built-in cabinet and a sliding door that extends seamlessly to a deck and private grassy yard, ideal for relaxation or entertaining. The sleek white kitchen is well appointed with a dishwasher and ample storage, while the main bedroom includes a built-in robe and direct access to the stylish bathroom.

A covered carport adds to the convenience, ensuring secure parking. With its unbeatable location, you can leave the car at home and enjoy easy access to all amenities. Whether you're looking for a comfortable home, a weekend retreat, or a smart investment to kickstart your portfolio, this unit is an excellent choice!



For Sale
\$225,000

View
ljhooker.com.au/ME6FCA

Contact
Lorraine Edlington
0437 532 860
ledlington.paynesville@ljhooker.com.au



Disclaimer: All information contained therein is gathered from relevant third parties sources. We cannot guarantee or give any warranty about the information provided. Interested parties must rely solely on their own enquiries.

LJ Hooker Paynesville | Lakes Entrance | Metung
(03) 5156 6166

More About this Property

Property ID	ME6FCA
Property Type	Unit
Including	Air Conditioning Toilets (1) Deck Dishwasher Floorboards Built-in-Robes

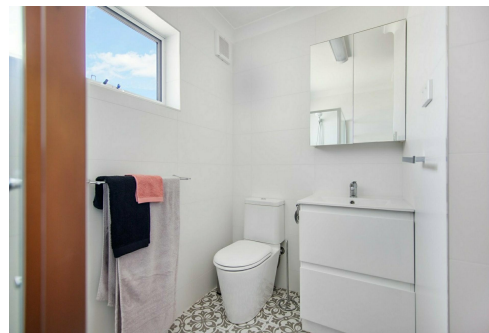
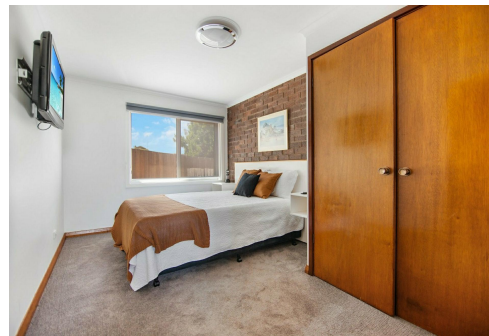
Lorraine Edlington 0437 532 860

Officer In Effective Control | Licensed Estate Agent |
ledlington.paynesville@ljhooker.com.au

LJ Hooker Paynesville | Lakes Entrance | Metung (03) 5156 6166

25A Esplanade, PAYNESVILLE VIC 3880

paynesville.ljhooker.com.au | paynesville@ljhooker.com.au



Disclaimer: All information contained therein is gathered from relevant third parties sources.
We cannot guarantee or give any warranty about the information provided. Interested parties must rely solely on their own enquiries.

**LJ Hooker Paynesville | Lakes
Entrance | Metung
(03) 5156 6166**