



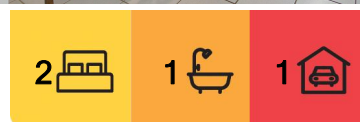
## Paynesville, 1/42 Ashley Street

### LIGHT FILLED UNIT - LOW MAINTENANCE LIVING

Nestled in a peaceful complex of just two, this spacious unit offers an exceptional low maintenance lifestyle close to the recreation reserve, bowls club and school. The light filled L shaped living area boasts split system heating and cooling for year round comfort. The well equipped kitchen features a Belling stove, dishwasher, ample bench space and storage, making meal preparation a breeze.

Two generously sized bedrooms, both with built in robes, are serviced by a central bathroom with a bath, shower and direct access to the separate toilet. The laundry provides additional storage, while outside, the private grassy backyard offers a tranquil retreat. A secure garage with a roller door completes the package.

With walking tracks nearby and the option to purchase fully furnished, this unit is ideal for downsizers, first home buyers, or investors seeking a convenient and relaxed lifestyle.



**For Sale**  
\$382,000

**View**  
By Appointment

**Contact**  
**Lorraine Edlington**  
0437 532 860  
ledlington.paynesville@ljhooker.com.au



**Disclaimer:** All information contained therein is gathered from relevant third parties sources. We cannot guarantee or give any warranty about the information provided. Interested parties must rely solely on their own enquiries.

**LJ Hooker Paynesville | Lakes Entrance | Metung**  
**(03) 5156 6166**



## More About this Property

Property ID	MBWFCA
Property Type	Unit
Including	Air Conditioning Toilets (1) Dishwasher Built-in-Robes

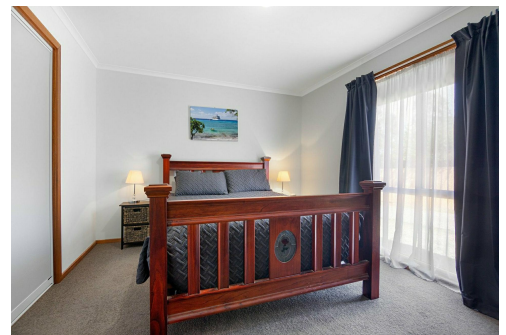
**Lorraine Edlington 0437 532 860**

Officer In Effective Control | Licensed Estate Agent |  
ledlington.paynesville@ljhooker.com.au

**LJ Hooker Paynesville | Lakes Entrance | Metung (03) 5156 6166**

25A Esplanade, PAYNESVILLE VIC 3880

paynesville.ljhooker.com.au | paynesville@ljhooker.com.au



**Disclaimer:** All information contained therein is gathered from relevant third parties sources.

We cannot guarantee or give any warranty about the information provided. Interested parties must rely solely on their own enquiries.

**LJ Hooker Paynesville | Lakes  
Entrance | Metung  
(03) 5156 6166**