



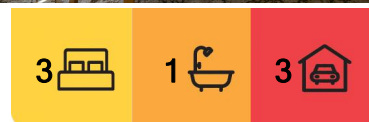
## Paynesville, 90 Langford Parade

### CHARMING ORIGINAL HOME IN PRIME LANGFORD PARADE LOCATION

Nestled in the highly sought after Langford Parade, this older style home offers a fantastic opportunity for those looking to renovate and make their mark in a blue chip location. Perfectly positioned within easy walking distance to the shops and the lake, the home combines convenience with potential.

Step inside to discover a traditional L shaped lounge and dining area that adjoins the functional kitchen. The home features three bedrooms, each with built-in robes, a central bathroom with both bath and shower and a separate toilet.

Set on a 541m<sup>2</sup> allotment with a carport accommodating up to three vehicles, the home retains its original charm and presents a rare chance to restore or modernise in one of the area's most tightly held streets. Whether you're a first home buyer, renovator or investor &ndash; this property offers endless potential in a premium location.



**For Sale**  
Please Call

**View**  
[ljhooker.com.au/MJ2FCA](http://ljhooker.com.au/MJ2FCA)

**Contact**  
**Lorraine Edlington**  
0437 532 860  
[ledlington.paynesville@ljhooker.com.au](mailto:ledlington.paynesville@ljhooker.com.au)



**Disclaimer:** All information contained therein is gathered from relevant third parties sources. We cannot guarantee or give any warranty about the information provided. Interested parties must rely solely on their own enquiries.

**LJ Hooker Paynesville | Lakes Entrance | Metung**  
**(03) 5156 6166**



## More About this Property

Property ID	MJ2FCA
Property Type	House
Land Area	541 m2
Including	Air Conditioning Toilets (1) Outdoor Entertaining Built-in-Robes Verticals Phone Landline

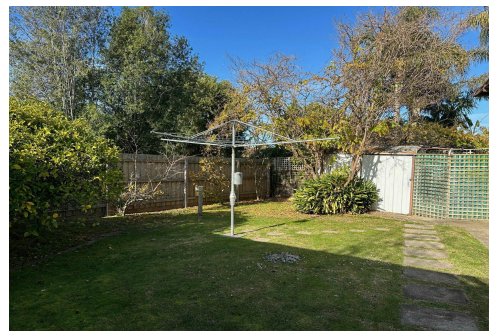
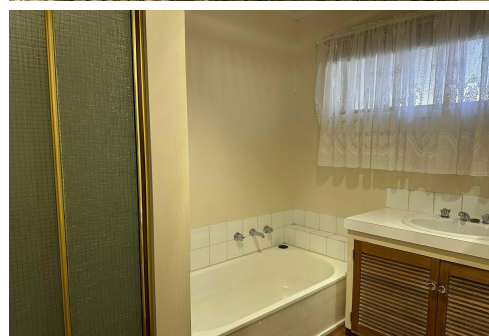
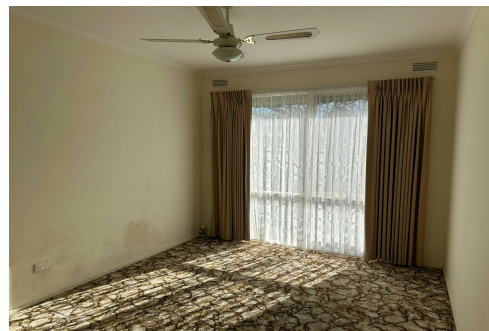
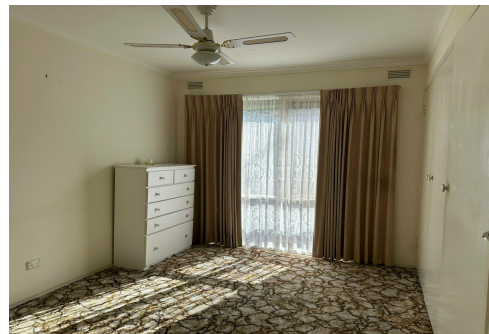
**Lorraine Edlington 0437 532 860**

Officer In Effective Control | Licensed Estate Agent |  
ledlington.paynesville@ljhooker.com.au

**LJ Hooker Paynesville | Lakes Entrance | Metung (03) 5156 6166**

25A Esplanade, PAYNESVILLE VIC 3880

paynesville.ljhooker.com.au | paynesville@ljhooker.com.au



**Disclaimer:** All information contained therein is gathered from relevant third parties sources.  
We cannot guarantee or give any warranty about the information provided. Interested parties must rely solely on their own enquiries.

**LJ Hooker Paynesville | Lakes  
Entrance | Metung  
(03) 5156 6166**