



## Paynesville, 9 Lara Close

### Charming Character Home in Peaceful Court Setting

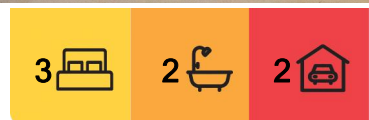
Nestled in a quiet court and surrounded by native gardens, this character filled home offers warmth, charm and a sense of timeless appeal.

Step inside to a welcoming slate-floored entry that leads to a light filled lounge and dining area complete with a cozy wood heater-perfect for relaxed evenings. The timber kitchen, equipped with electric cooking and dishwasher, overlooks the garden and adjoins the meals area with sliding glass doors opening to a covered outdoor space-ideal for entertaining or simply enjoying the peaceful surrounds.

The master bedroom features mirrored wardrobe doors and convenient access to a separate toilet. A functional laundry completes the lower level.

Upstairs, you'll find two additional bedrooms serviced by a second bathroom, as well as a handy study nook-ideal for working from home or as a quiet retreat. The home also features electric heating/cooling and a gas heater for year-round comfort.

Adding to the charm, the detached garage has been styled to match the home, further enhancing its cottage like appeal.



**For Sale**  
\$460,000

**View**  
[ljhooker.com.au/MGGFCA](http://ljhooker.com.au/MGGFCA)

**Contact**  
**Lorraine Edlington**  
0437 532 860  
[ledlington.paynesville@ljhooker.com.au](mailto:ledlington.paynesville@ljhooker.com.au)



**Disclaimer:** All information contained therein is gathered from relevant third parties sources. We cannot guarantee or give any warranty about the information provided. Interested parties must rely solely on their own enquiries.

**LJ Hooker Paynesville | Lakes Entrance | Metung**  
**(03) 5156 6166**



This is a delightful opportunity for buyers seeking a home with personality and soul in a tranquil location.

## More About this Property

Property ID	MGGFCA
Property Type	House
Land Area	634 m2
Including	Ensuite Air Conditioning Toilets (2) Dishwasher Outdoor Entertaining Built-in-Robes Remote Garage

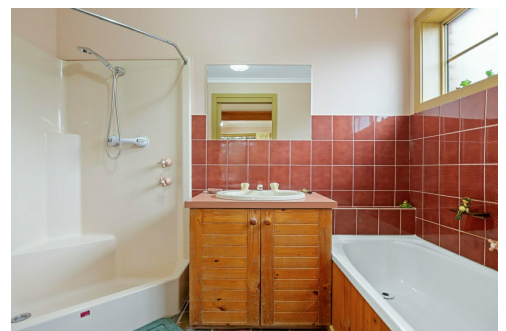
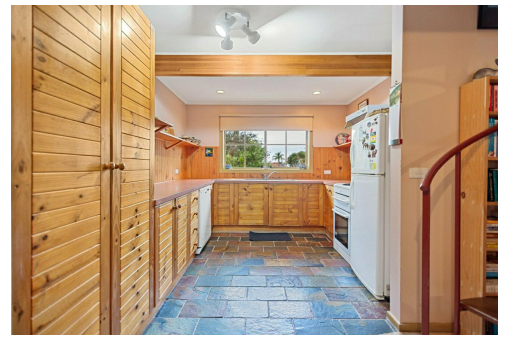
**Lorraine Edlington 0437 532 860**

Officer In Effective Control | Licensed Estate Agent |  
ledlington.paynesville@ljhooker.com.au

**LJ Hooker Paynesville | Lakes Entrance | Metung (03) 5156 6166**

25A Esplanade, PAYNESVILLE VIC 3880

paynesville.ljhooker.com.au | paynesville@ljhooker.com.au



**Disclaimer:** All information contained therein is gathered from relevant third parties sources.  
We cannot guarantee or give any warranty about the information provided. Interested parties must rely solely on their own enquiries.

**LJ Hooker Paynesville | Lakes  
Entrance | Metung  
(03) 5156 6166**