



8 Cumming Street, Paynesville

COMFORTABLE FAMILY HOME ON 1000M2 ALLOTMENT

Set on a spacious 1,000m² allotment, this comfortable home offers relaxed living with plenty of room both inside and out.

The floorplan includes a practical kitchen and meals area that adjoins the lounge room, creating a welcoming space for everyday living and family gatherings. Accommodation comprises four bedrooms, with the master featuring its own ensuite, while the remaining bedrooms are serviced by a central family bathroom.

Outside, the large allotment provides ample space for children to play, future improvements, or simply enjoying the open surroundings. A Colorbond shed adds valuable storage and there is excellent access with plenty of room to securely accommodate a caravan, boat, or additional vehicles.

An ideal option for families, retirees, or those seeking space and flexibility on a generous parcel of land.

4  2  2 

FOR SALE

Please Call

AGENTS

Lorraine Edlington

0437 532 860

ledlington.paynesville@ljhooker.com.au

AGENCY

LJ Hooker Paynesville | Lakes Entrance

| Metung

(03) 5156 6166

All information contained therein is gathered from relevant third parties sources.
We cannot guarantee or give any warranty about the information provided.
Interested parties must rely solely on their own enquiries.



MORE DETAILS

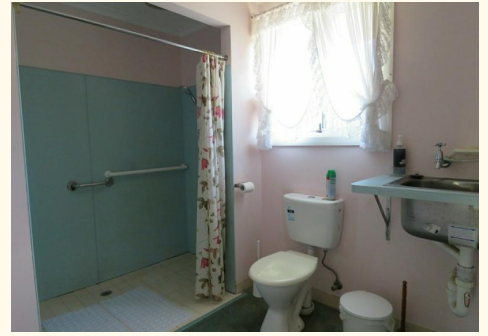
Property ID	MQ5FCA
Property Type	House
Land Area	984 m2
Including	Ensuite
	Air Conditioning
	Toilets (2)
	Outdoor Entertaining

Lorraine Edlington 0437 532 860

Officer In Effective Control | Licensed Estate Agent |
ledlington.paynesville@ljhooker.com.au

LJ Hooker Paynesville | Lakes Entrance | Metung (03) 5156 6166

25A Esplanade, PAYNESVILLE VIC 3880
paynesville.ljhooker.com.au | paynesville@ljhooker.com.au



All information contained therein is gathered from relevant third parties sources.
We cannot guarantee or give any warranty about the information provided.
Interested parties must rely solely on their own enquiries.