

Paynesville, 71 Slip Road

CHARMING REFURBISHED HOME CLOSE TO THE WATERFRONT

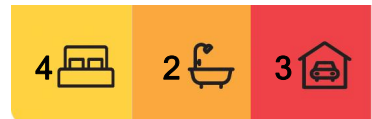
This beautifully refurbished home, decorated in the Hampton theme, seamlessly combines timeless charm with modern updates, delivering an enviable lifestyle just moments from the waterfront. Freshly painted interiors and new vinyl plank flooring create a light filled and inviting atmosphere in the open plan living area, complemented by the cosy glow of a gas log fire.

The kitchen is a standout, boasting a timber floor, 900mm gas/electric stove, dishwasher, appliance cupboard and a blend of timber and stainless steel benchtops. A walk-in pantry and cafe window opening onto an expansive deck make it ideal for stylish entertaining.

Flexible accommodation includes a ground floor bedroom with built in robes, a renovated bathroom featuring a larger shower, lots of storage and heated towel rail. Upstairs, the master suite offers built in robes with mirrored doors, a split system, ensuite and access to a private deck with tranquil views. An additional bedroom provides further versatility.



Disclaimer: All information contained therein is gathered from relevant third parties sources. We cannot guarantee or give any warranty about the information provided. Interested parties must rely solely on their own enquiries.



For Sale
Please Call

View
ljhooker.com.au/MBBFCA

Contact
Lorraine Edlington
0437 532 860
ledlington.paynesville@ljhooker.com.au

LJ Hooker Paynesville | Lakes Entrance | Metung
(03) 5156 6166

Thoughtful upgrades, including new lighting, window furnishings, ceiling fans and carpets, enhance the Hampton inspired aesthetic throughout.

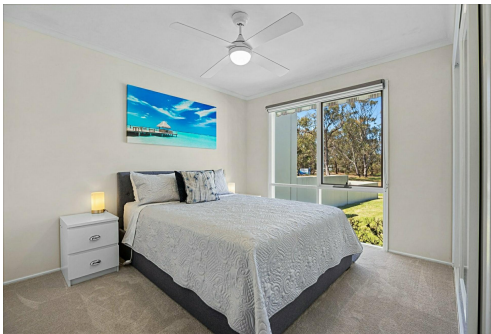
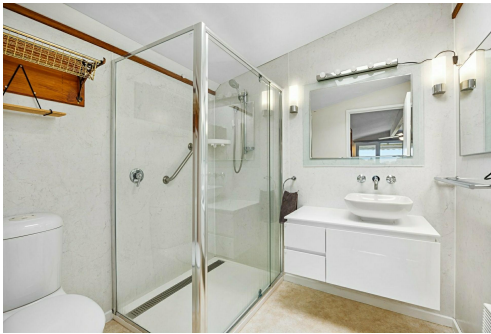
Outside, the deck connects to a versatile studio/guest bedroom and workshop, perfect for hosting guests or pursuing hobbies. Additional features include storage shed, double sized garden shed, car accommodation for three vehicles and a private rear yard. Positioned across from a reserve and close to the Cruiser Club and boat ramp.

More About this Property

Property ID	MBBFCA
Property Type	House
Land Area	702 m2
Including	Ensuite Air Conditioning Toilets (2) Balcony Deck Dishwasher Outdoor Entertaining Workshop Built-in-Robes

Lorraine Edlington 0437 532 860
Officer In Effective Control | Licensed Estate Agent |
ledlington.paynesville@ljhooker.com.au

LJ Hooker Paynesville | Lakes Entrance | Metung (03) 5156 6166
25A Esplanade, PAYNESVILLE VIC 3880
paynesville.ljhooker.com.au | paynesville@ljhooker.com.au



Disclaimer: All information contained therein is gathered from relevant third parties sources.
We cannot guarantee or give any warranty about the information provided. Interested parties must rely solely on their own enquiries.

**LJ Hooker Paynesville | Lakes
Entrance | Metung
(03) 5156 6166**