



6 Toonlook Parade, Paynesville


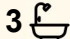
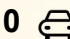
TIMELESS CHARM MEETS DESIGNER LIVING IN THE HEART OF TOWN

Perfectly positioned in a sought after downtown location just moments from the waterfront, this charming residence has been recently extended and meticulously renovated to the highest standard, with no expense spared.

At the heart of the home lies a truly stunning kitchen, beautifully appointed with 40mm stone benchtops, extensive custom cabinetry, dishwasher and a 900mm gas/electric oven uniquely set within the original brick fireplace, a striking blend of old world character and contemporary luxury. The kitchen seamlessly connects to the inviting sitting room on one side, where a cosy wood fire, original Baltic timber floors and high ceilings create warmth and ambience.

Flowing from the kitchen in the opposite direction, the thoughtfully designed extension reveals a spacious family and dining room, flooded with natural light. Double glazed doors open onto a sunny deck, providing the perfect setting for relaxed outdoor entertaining or quiet morning coffees.

The grand master suite is a private retreat, complete with a superbly fitted walk-in robe featuring quality cabinetry and a luxurious ensuite boasting a feature timber vanity and oversized shower. Two additional

5  3  0 

FOR SALE
\$700,000 - \$725,000

VIEW
By Appointment

AGENTS
Lorraine Edlington
0437 532 860
ledlington.paynesville@ljhooker.com.au

AGENCY
LJ Hooker Paynesville | Lakes Entrance
| Metung
(03) 5156 6166

All information contained therein is gathered from relevant third parties sources.
We cannot guarantee or give any warranty about the information provided.
Interested parties must rely solely on their own enquiries.

 **LJ Hooker**

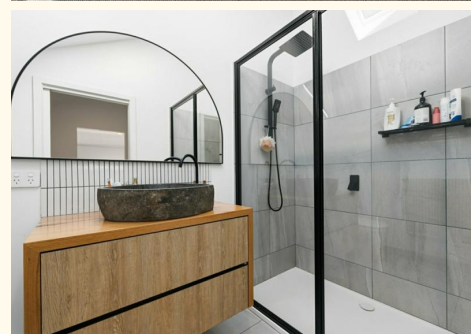
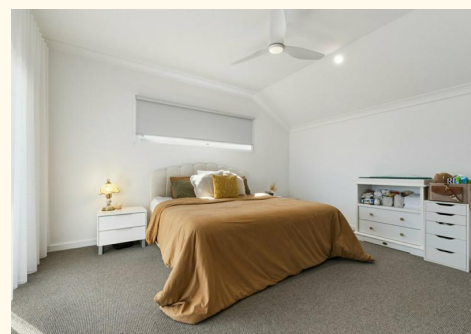
bedrooms are thoughtfully zoned away from the master and are serviced by a central bathroom. Adding exceptional versatility, the property also includes a separate studio with its own bathroom, ideal for guests, extended family, a home office or creative space. Blending timeless character with high spec contemporary finishes and located within easy walking distance to shops, cafes and the waterfront, this outstanding home delivers an enviable lifestyle in a premium town centre setting.

MORE DETAILS

Property ID	MS9FCA
Property Type	House
Land Area	633 m2
Including	Ensuite
	Air Conditioning
	Toilets (3)
	Dishwasher
	Outdoor Entertaining
	Built-in-Robes

Lorraine Edlington 0437 532 860
Officer In Effective Control | Licensed Estate Agent |
ledlington.paynesville@ljhooker.com.au

LJ Hooker Paynesville | Lakes Entrance | Metung (03) 5156 6166
25A Esplanade, PAYNESVILLE VIC 3880
paynesville.ljhooker.com.au | paynesville@ljhooker.com.au



6 TOONALOOK PARADE, PAYNESVILLE



Disclaimer: Whilst every attempt has been made to ensure the accuracy of this floorplan, measurements of doors, windows, rooms and any other items are approximate only. The producer or the agent cannot be held responsible for any errors, omissions or misstatements. This plan is for illustrative purposes only and should be used as such.