



Paynesville, 4 Wisteria Place

EFFORTLESS LUXURY, STUNNING LAKE VIEWS, 2 PERSON LIFT

Perfectly positioned to embrace sweeping lake views, this beautifully designed home offers refined living across two spacious levels, where comfort, quality and practicality meet in perfect harmony. The inclusion of a 2 person lift ensures easy access between both levels, making this home as functional as it is beautiful.

Occupying the top floor, the living room is where the home truly shines. Rich Makha wood parquet flooring sets a warm, elegant tone, flowing through the open plan living and dining area, an ideal space for entertaining or simply relaxing with a view. The entertainer's kitchen is both stylish and functional, while the adjoining study with charming bay windows provides a peaceful work-from-home retreat. A gas log fireplace and split systems provide year round comfort.

Step outside onto the expansive deck, capturing panoramic lake vistas, the perfect



Disclaimer: All information contained therein is gathered from relevant third parties sources. We cannot guarantee or give any warranty about the information provided. Interested parties must rely solely on their own enquiries.

3

2

3

For Sale
\$945,000

View
By Appointment

Contact
Lorraine Edlington
0437 532 860
ledlington.paynesville@ljhooker.com.au

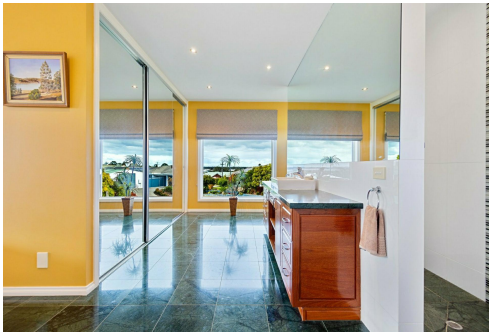
LJ Hooker Paynesville | Lakes Entrance | Metung
(03) 5156 6166

backdrop for morning coffee, afternoon drinks, or long summer dinners. The master bedroom also opens directly onto the deck and features spacious built-in robes and private ensuite, offering a tranquil and elevated sanctuary.

Downstairs, the home continues to impress with two generous bedrooms, each with built-in robes and glass sliding doors providing access to a private rear courtyard. A well-appointed central bathroom with spa bath, full laundry and a spacious double garage with automatic roller doors complete the lower level. Practical additions like the ducted vacuum system and day/night blinds throughout add everyday ease.

For those with boats, caravans or hobbies, the property also boasts a 9 metre shed with barn-style doors for extra clearance, plus a rear roller door allowing full drive-through access to the backyard.

This is lakeside living without compromise, versatile, stylish, and built for real life.



More About this Property

Property ID	MGVFCA
Property Type	House
Land Area	1100 m2
Including	Ensuite Study Air Conditioning Toilets (2) Alarm Intercom Courtyard Balcony Deck Dishwasher Outdoor Entertaining Floorboards Workshop Built-in-Robes Secure Parking Fully Fenced Remote Garage Solar Panels

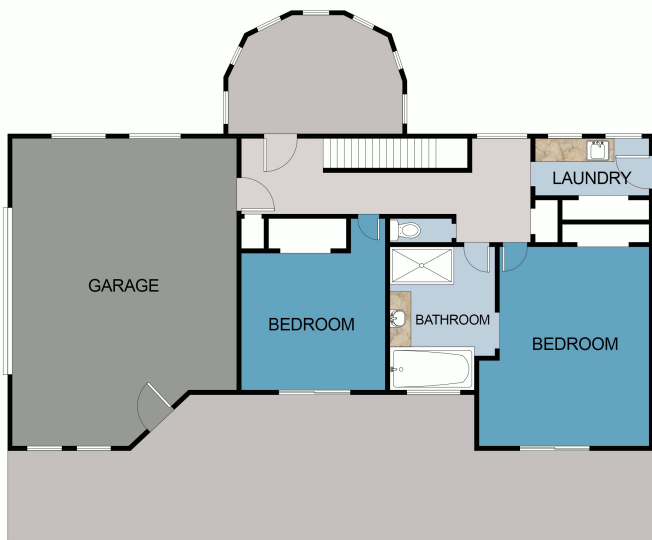
Lorraine Edlington 0437 532 860
Officer In Effective Control | Licensed Estate Agent |
ledlington.paynesville@ljhooker.com.au

LJ Hooker Paynesville | Lakes Entrance | Metung (03) 5156 6166
25A Esplanade, PAYNESVILLE VIC 3880
paynesville.ljhooker.com.au | paynesville@ljhooker.com.au

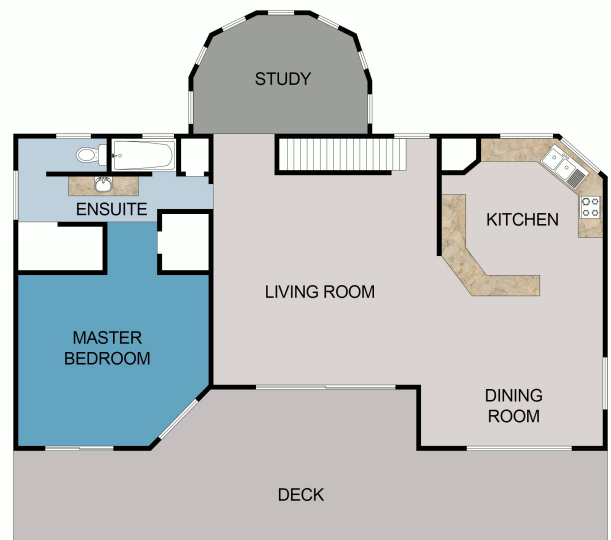


Disclaimer: All information contained therein is gathered from relevant third parties sources. We cannot guarantee or give any warranty about the information provided. Interested parties must rely solely on their own enquiries.

**LJ Hooker Paynesville | Lakes
Entrance | Metung
(03) 5156 6166**



GROUND LEVEL



LEVEL 1

Disclaimer: Whilst every attempt has been made to ensure the accuracy of this floorplan, measurements or doors, windows, rooms and any other items are approximate only. The producer or the agent cannot be held responsible for any errors, omissions or misstatements. This plan is for illustrative purposes only and should be used as such.

4 Wisteria Place, Paynesville