



32 Palm Avenue, Paynesville

QUALITY LIVING IN A SOUGHT-AFTER ESTATE


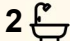
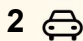
Perfectly positioned in a popular estate directly opposite the reserve and surrounded by quality homes, this modern residence delivers space, style and an enviable low maintenance lifestyle.

A welcoming entry hall sets the tone, leading through to a thoughtfully designed floorplan. The spacious master bedroom is privately positioned and features a generous walk-in robe and ensuite complete with an oversized shower and vanity.

The heart of the home is the light filled open plan living zone, enhanced by a cosy gas log fire and sliding glass doors opening to the covered outdoor entertaining area. Here, you can relax and enjoy the desirable northern aspect year round. The well appointed kitchen boasts stone benchtops, walk-in pantry, gas/electric cooking and dishwasher, perfectly designed for everyday ease and entertaining alike.

Two additional bedrooms, each with built-in robes, are serviced by a central bathroom and separate toilet. Internal access to the double garage adds further convenience.

Additional features include 8'6" ceilings throughout, electric ducted heating and cooling, ducted vacuum system, roller blinds, excellent storage options, footpaths surrounding the home, 16 solar panels for energy efficiency and vehicle access to the rear yard, ideal for a boat

3  2  2 

FOR SALE
\$550,000

AGENTS

Lorraine Edlington
0437 532 860
ledlington.paynesville@ljhooker.com.au

AGENCY

LJ Hooker Paynesville | Lakes Entrance
| Metung
(03) 5156 6166

All information contained therein is gathered from relevant third parties sources.
We cannot guarantee or give any warranty about the information provided.
Interested parties must rely solely on their own enquiries.

 **LJ Hooker**

or caravan.

Offering modern comfort, practical design and easy care surrounds, this is a lovely lifestyle property ideal for those seeking quality living with minimal upkeep.

MORE DETAILS

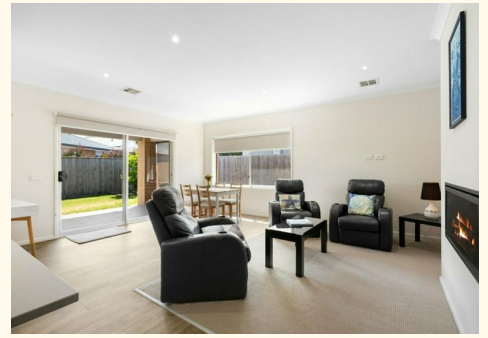
Property ID	MS1FCA
Property Type	House
Land Area	475 m2
Including	Ensuite
	Ducted Cooling
	Ducted Heating
	Toilets (2)
	Dishwasher
	Outdoor Entertaining
	Built-in-Robes
	Secure Parking
	Fully Fenced
	Remote Garage
	Solar Panels
	Solar Hot Water

Lorraine Edlington 0437 532 860

Officer In Effective Control | Licensed Estate Agent |
ledlington.paynesville@ljhooker.com.au

LJ Hooker Paynesville | Lakes Entrance | Metung (03) 5156 6166

25A Esplanade, PAYNESVILLE VIC 3880
paynesville.ljhooker.com.au | paynesville@ljhooker.com.au





FLOOR PLAN

32 Palm Avenue, Paynesville

Disclaimer: Whilst every attempt has been made to ensure the accuracy of this floorplan, measurements of doors, windows, rooms and any other items are approximate only. The producer or the agent cannot be held responsible for any errors, omissions or misstatements. This plan is for illustrative purposes only and should be used as such.