

Paynesville, 3 Alice Court

CONTEMPORARY HOME WITH RURAL VIEWS IN PAYNESVILLE

This contemporary home offers a serene outlook across the reserve to rural views beyond. Freshly painted internally and featuring new carpets, it boasts an entry hall leading to an open plan living area, with a sliding glass door opening to a covered alfresco space. The kitchen is equipped with electric/gas cooking, a dishwasher and ample bench space. There are four bedrooms, with the main including a walk-in robe and ensuite. The bathroom features both a bath and shower. Recently installed double gates provide convenient vehicle access to the rear yard. Situated close to the school, this move in ready home lets you unpack and immediately start enjoying a fabulous lifestyle in Paynesville, home to the beautiful Gippsland Lakes.



For Sale
Please Call

View
ljhooker.com.au/M6JFCA

Contact
Lorraine Edlington
0437 532 860
ledlington.paynesville@ljhooker.com.au



LJ Hooker Paynesville
(03) 5156 6166

Disclaimer: All information contained therein is gathered from relevant third parties sources. We cannot guarantee or give any warranty about the information provided. Interested parties must rely solely on their own enquiries.

More About this Property

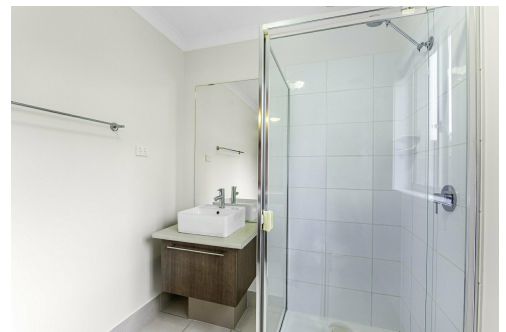
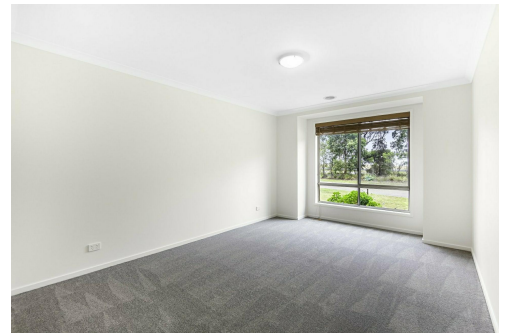
Property ID	M6JFCA
Property Type	House
Land Area	674 m ²
Including	Ensuite Air Conditioning Ducted Heating Toilets (2) Dishwasher Outdoor Entertaining Solar Hot Water

Lorraine Edlington 0437 532 860

Officer In Effective Control | Licensed Estate Agent |
ledlington.paynesville@ljhooker.com.au

LJ Hooker Paynesville (03) 5156 6166

25A Esplanade, PAYNESVILLE VIC 3880
paynesville.ljhooker.com.au | paynesville@ljhooker.com.au



LJ Hooker Paynesville
(03) 5156 6166

Disclaimer: All information contained therein is gathered from relevant third parties sources.
We cannot guarantee or give any warranty about the information provided. Interested parties must rely solely on their own enquiries.