

27 Haylock Drive, Paynesville


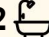

STYLISH MODERN LIVING WITH ROOM FOR A SHED

Set on a generous 769m2 allotment, this stylish modern home offers exceptional living with thoughtful design and quality finishes throughout.

A welcoming entry hall leads to two spacious living areas, both enjoying a sunny northern orientation. The formal lounge offers a quiet retreat, while the open plan kitchen, dining and living area is the heart of the home, with sliding doors to the covered outdoor entertaining space. The designer kitchen features a 40mm stone benchtop with waterfall edge, large walk-in pantry, 900mm freestanding stove, dishwasher and ample bench space. Privately zoned, the master suite includes a double door entry, walk-in robe and ensuite with oversized shower, twin stone topped vanity, heated towel rail and toilet. Three additional bedrooms with built-in robes share a central bathroom.

With calming earthy tones, 8'6" ceilings, ducted gas heating, two split systems and day/night blinds throughout, comfort is guaranteed. A functional laundry includes a walk-in linen cupboard and there is internal access from the double garage with auto door.

The low maintenance yard includes double gates for rear access-ideal for a shed. Located close to Paynesville Park, this home offers space, style, and a relaxed lifestyle.

4  2  2 

FOR SALE
\$675,000

AGENTS

Lorraine Edlington
0437 532 860
ledlington.paynesville@ljhooker.com.au

AGENCY

LJ Hooker Paynesville | Lakes Entrance
| Metung
(03) 5156 6166

All information contained therein is gathered from relevant third parties sources.
We cannot guarantee or give any warranty about the information provided.
Interested parties must rely solely on their own enquiries.

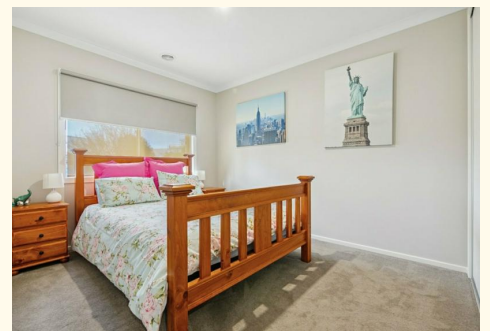
 **LJ Hooker**

MORE DETAILS

Property ID MHHFCA
Property Type House
House Size 258.18 m2
Land Area 767 m2
Including Ensuite
Air Conditioning
Ducted Heating
Toilets (2)
Dishwasher
Outdoor Entertaining
Built-in-Robes
Fully Fenced
Remote Garage

Lorraine Edlington 0437 532 860
Officer In Effective Control | Licensed Estate Agent |
ledlington.paynesville@ljhooker.com.au

LJ Hooker Paynesville | Lakes Entrance | Metung (03) 5156 6166
25A Esplanade, PAYNESVILLE VIC 3880
paynesville.ljhooker.com.au | paynesville@ljhooker.com.au





FLOOR PLAN

Whilst every attempt has been made to ensure the accuracy of this floorplan, measurements or doors, windows, rooms and any other items are approximate only. The producer or the agent cannot be held responsible for any errors, omissions or misstatements. This plan is for illustrative purposes only and should be used as such.

27 Haylock Drive, Paynesville