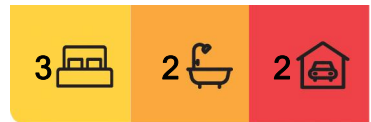


Paynesville, 18 The Grange

EXQUISITE MODERN HAVEN

Situated in prestigious estate overlooking central parkland. This delightful home offers a seamless blend of style and comfort. The open plan living area leads to a spacious covered deck, perfect for outdoor entertaining. A stylish kitchen with wall oven, walk-in pantry and island bench is a chef's dream. Three bedrooms, including a master with ensuite and walk-in robe, ensure ample space. Additional features include a sunroom, study, bathroom, internal access to the home from the double garage, ducted gas heating, split system cooling, solar panels and charming gardens. A must see residence for discerning buyers.



For Sale
Please Call

View
ljhooker.com.au/M39FCA

Contact
Lorraine Edlington
0437 532 860
ledlington.paynesville@ljhooker.com.au



Disclaimer: All information contained therein is gathered from relevant third parties sources. We cannot guarantee or give any warranty about the information provided. Interested parties must rely solely on their own enquiries.

LJ Hooker Paynesville | Lakes Entrance | Metung
(03) 5156 6166

More About this Property

Property ID	M39FCA
Property Type	House
Land Area	601 m2
Including	Ensuite Study Ducted Heating Toilets (2) Dishwasher Outdoor Entertaining Built-in-Robes Fully Fenced Remote Garage Solar Panels Solar Hot Water

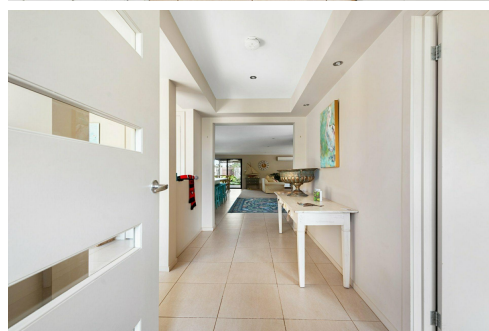
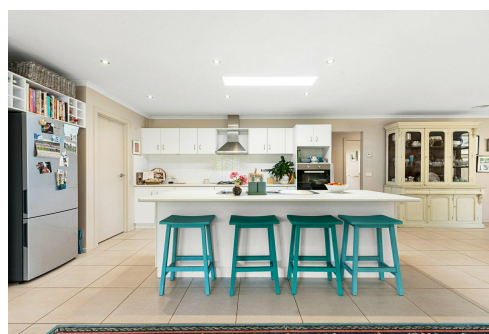
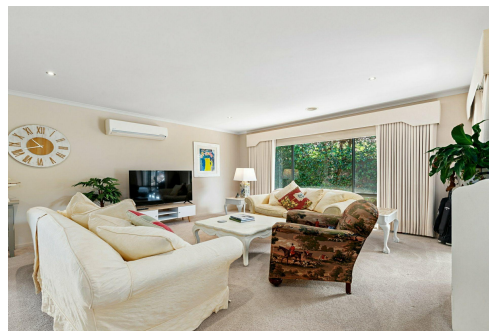
Lorraine Edlington 0437 532 860

Officer In Effective Control | Licensed Estate Agent |
ledlington.paynesville@ljhooker.com.au

LJ Hooker Paynesville | Lakes Entrance | Metung (03) 5156 6166

25A Esplanade, PAYNESVILLE VIC 3880

paynesville.ljhooker.com.au | paynesville@ljhooker.com.au



Disclaimer: All information contained therein is gathered from relevant third parties sources.

We cannot guarantee or give any warranty about the information provided. Interested parties must rely solely on their own enquiries.

**LJ Hooker Paynesville | Lakes
Entrance | Metung
(03) 5156 6166**

