



15 Windjammer Court, Paynesville

## RARE 1281m2 WATERFRONT HAVEN WITH JETTY BERTH & TRIPLE GARAGE

Discover a truly special waterfront opportunity on the canals with this rarely offered, charming home set on a generous 1281m2 allotment, delivering exceptional space, privacy and an enviable Riviera Harbours lifestyle. Thoughtfully designed to celebrate its stunning surrounds, the home features a spacious covered outdoor living area, an ideal place to relax while enjoying uninterrupted views of the tranquil canals and the quality homes beyond. Inside, the light filled living areas wrap around the outdoor entertaining space, capturing water views from every angle. The kitchen, positioned at the heart of the home, provides excellent storage and flows effortlessly to the dining area and the generous lounge room. A wood heater with an ornate mantle creates a warm focal point, complemented by a split system for year round comfort. Glass doors open directly onto the deck, enhancing the home's indoor/outdoor connection. The master bedroom enjoys serene canal views and includes an ensuite, while two additional bedrooms are serviced by an updated central bathroom. A functional laundry completes the main residence. Perfect for guests, extended family, or hobbies, the property includes

4 3 3

**FOR SALE**  
\$1,550,000 'NEW PRICE'

**VIEW**  
By Appointment

**AGENTS**  
Lorraine Edlington  
0437 532 860  
ledlington.paynesville@ljhooker.com.au

**AGENCY**  
LJ Hooker Paynesville | Lakes Entrance  
| Metung  
(03) 5156 6166

All information contained therein is gathered from relevant third parties sources. We cannot guarantee or give any warranty about the information provided. Interested parties must rely solely on their own enquiries.

LJ Hooker

a separate studio complete with its own bathroom. This space connects seamlessly to the oversized triple garage, featuring three roller doors and a high clearance centre bay ideal for boats, caravans, or larger vehicles.

For boating enthusiasts, convenience is unmatched with a waterside boat shed for gear storage and a private jetty berth to keep your vessel ready for adventure. Spend your days exploring the iconic Gippsland Lakes, fishing, boating, or simply soaking up the peaceful waterfront atmosphere.

A rare offering combining space, water access, and lifestyle. This is canal side living at its finest.

## MORE DETAILS

Property ID	MP0FCA
Property Type	House
Land Area	1281 m2
Including	Air Conditioning Toilets (3) Dishwasher Outdoor Entertaining Built-in-Robes Remote Garage

**Lorraine Edlington 0437 532 860**

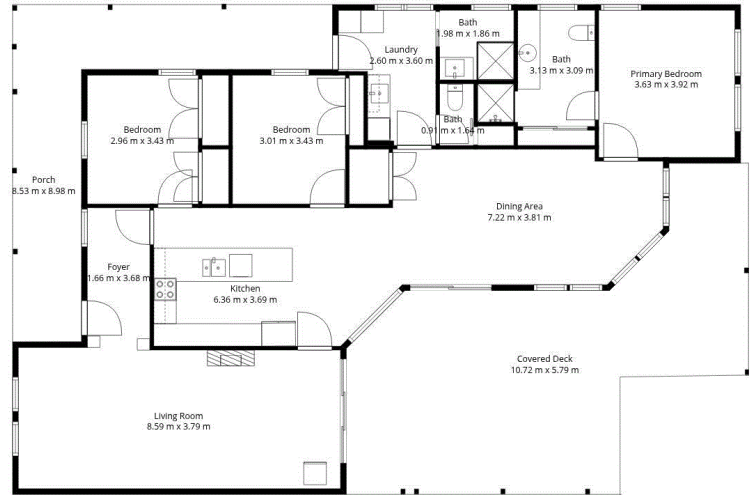
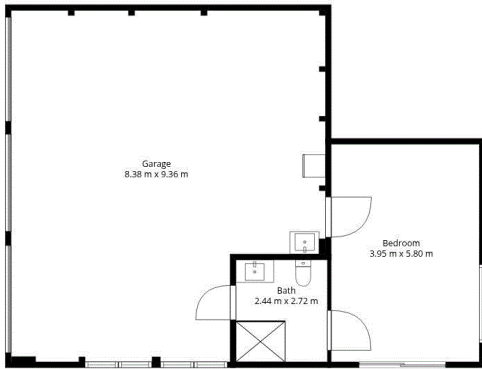
Officer In Effective Control | Licensed Estate Agent |  
ledlington.paynesville@ljhooker.com.au

**LJ Hooker Paynesville | Lakes Entrance | Metung (03) 5156 6166**

25A Esplanade, PAYNESVILLE VIC 3880  
paynesville.ljhooker.com.au | paynesville@ljhooker.com.au



# 15 Windjammer Court, Paynesville



Disclaimer: Whilst every attempt has been made to ensure the accuracy of this floorplan, measurements of doors, windows, rooms and any other items are approximate only. The producer or the agent cannot be held responsible for any errors, omissions or misstatements. This plan is for illustrative purposes only and should be used as such.