

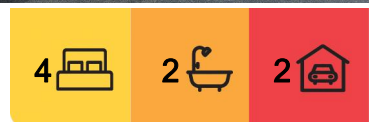
## Paynesville, 14 Coast Avenue

### FULLY REFURBISHED MODERN FOUR BEDROOM HOME

Set on a 686m<sup>2</sup> allotment amidst attractive native gardens, this fully refurbished modern home offers effortless living with style, space and comfort. Inside, you'll be welcomed by a fresh contemporary interior and an open plan layout that flows seamlessly to a covered outdoor living area complete with a mains connected barbeque, ideal for entertaining year round.

The kitchen is a standout feature, finished in modern tones and fitted with stylish new appliances to suit any home chef. Four bedrooms provide ample accommodation, including a master retreat with walk-in robe, split system and private ensuite. The remaining bedrooms all include built in robes and are serviced by a centrally located family bathroom and separate toilet.

Comfort is assured throughout the seasons with ducted gas heating, split system air conditioning and a cozy wood heater. Internal access from the garage adds convenience, while outside, coloured concrete pathways border the side and rear of the home,



**For Sale**  
Please Call

**View**  
[ljhooker.com.au/MG6FCA](http://ljhooker.com.au/MG6FCA)

**Contact**  
**Lorraine Edlington**  
0437 532 860  
[ledlington.paynesville@ljhooker.com.au](mailto:ledlington.paynesville@ljhooker.com.au)



**Disclaimer:** All information contained therein is gathered from relevant third parties sources. We cannot guarantee or give any warranty about the information provided. Interested parties must rely solely on their own enquiries.

**LJ Hooker Paynesville | Lakes Entrance | Metung**  
**(03) 5156 6166**

enhancing both function and appearance. Double gates at the side allow secure vehicle access to the backyard perfect for trailers or additional storage.

This superb home is the perfect package for families or anyone seeking a relaxed lifestyle in a beautifully landscaped setting.

## More About this Property

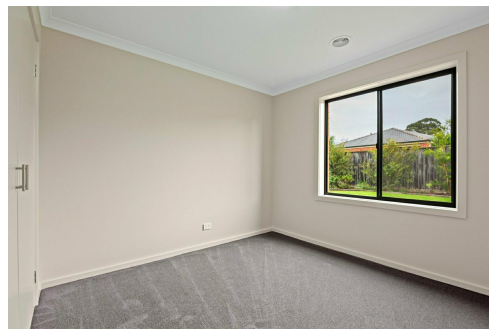
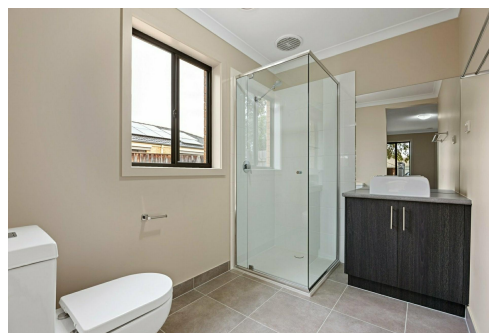
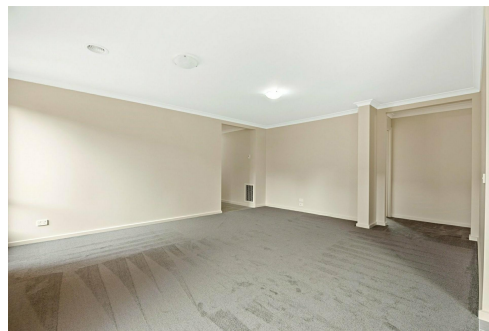
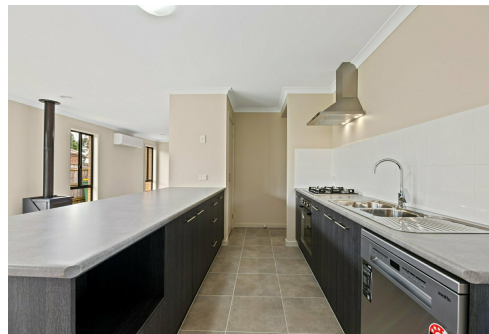
<b>Property ID</b>	MG6FCA
<b>Property Type</b>	House
<b>Land Area</b>	686 m2
<b>Including</b>	Ensuite Air Conditioning Ducted Heating Toilets (2) Dishwasher Outdoor Entertaining Built-in-Robes Fully Fenced

### Lorraine Edlington 0437 532 860

Officer In Effective Control | Licensed Estate Agent |  
ledlington.paynesville@ljhooker.com.au

### LJ Hooker Paynesville | Lakes Entrance | Metung (03) 5156 6166

25A Esplanade, PAYNESVILLE VIC 3880  
paynesville.ljhooker.com.au | paynesville@ljhooker.com.au



**Disclaimer:** All information contained therein is gathered from relevant third parties sources. We cannot guarantee or give any warranty about the information provided. Interested parties must rely solely on their own enquiries.

**LJ Hooker Paynesville | Lakes  
Entrance | Metung  
(03) 5156 6166**