



11 Marina Drive, Paynesville


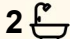
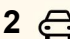
SPACIOUS SIX BEDROOM HOME WITH LAKE VIEWS

Nestled just a street back from the serene waters of the lake, this two level home offers a tranquil retreat with glimpses of the lake from its upper level. The open plan living area seamlessly connects to the entertaining deck, where you can unwind and soak in the mesmerising lake vistas.

Inside, the home boasts a new kitchen featuring timber benchtops, white cabinetry and modern appliances including a wall oven. The six bedrooms provide ample space for family and guests, while the two bathrooms ensure convenience and comfort. The home is adorned with timber floors and has been recently painted, adding a fresh and inviting ambiance.

Additional features include electric heating and cooling for year round comfort. Outside, a carport and a 4m x 9m colorbond shed offer plenty of space for vehicles and storage. The rear deck, in need of replacement or removal, presents an exciting opportunity for a creative buyer to enhance and customise this outdoor space.

Ideally located just a stone's throw from the waterfront and boat ramp, this property is perfect as a holiday home or permanent residence for those seeking a peaceful lakeside lifestyle. With its spacious layout and scenic surroundings, this home offers a unique opportunity for extended families or those who love to entertain.

6  2  2 

FOR SALE
\$600,000 - \$650,000

VIEW
By Appointment

AGENTS
Lorraine Edlington
0437 532 860
ledlington.paynesville@ljhooker.com.au

AGENCY
LJ Hooker Paynesville | Lakes Entrance
| Metung
(03) 5156 6166

All information contained therein is gathered from relevant third parties sources.
We cannot guarantee or give any warranty about the information provided.
Interested parties must rely solely on their own enquiries.

 **LJ Hooker**

Ask about the option to purchase fully furnished.

MORE DETAILS

Property ID	M5HFCA
Property Type	House
Land Area	533 m2
Including	Air Conditioning
	Toilets (2)
	Dishwasher
	Outdoor Entertaining
	Built-in-Robes

Lorraine Edlington 0437 532 860

Officer In Effective Control | Licensed Estate Agent |
ledlington.paynesville@ljhooker.com.au

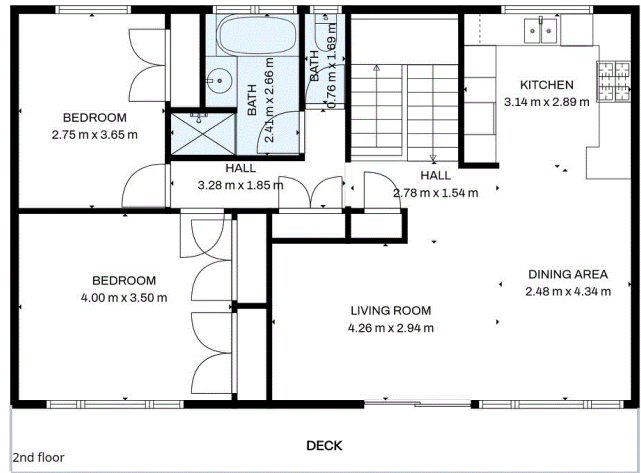
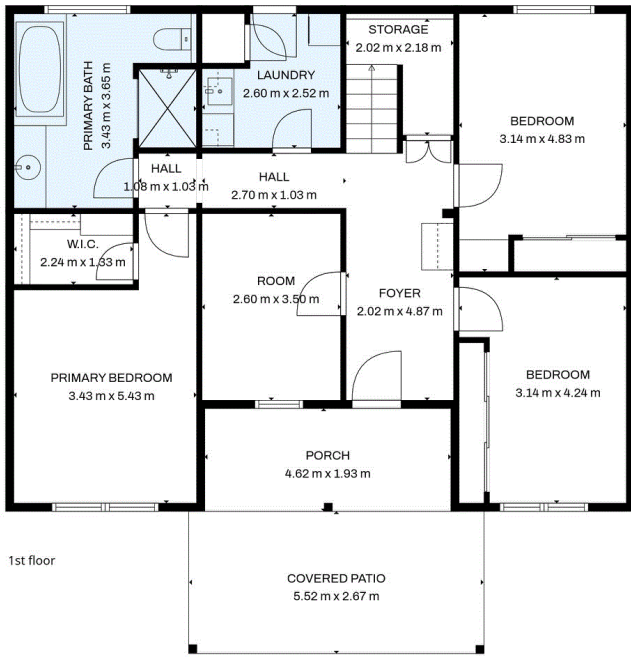
LJ Hooker Paynesville | Lakes Entrance | Metung (03) 5156 6166

25A Esplanade, PAYNESVILLE VIC 3880
paynesville.ljhooker.com.au | paynesville@ljhooker.com.au



All information contained therein is gathered from relevant third parties sources.
We cannot guarantee or give any warranty about the information provided.
Interested parties must rely solely on their own enquiries.

11 MARINA PARADE, PAYNESVILLE



Disclaimer: Whilst every attempt has been made to ensure the accuracy of this floorplan, measurements of doors, windows, rooms and any other items are approximate only. The producer or the agent cannot be held responsible for any errors, omissions or misstatements. This plan is for illustrative purposes only and should be used as such.

All information contained therein is gathered from relevant third parties sources. We cannot guarantee or give any warranty about the information provided. Interested parties must rely solely on their own enquiries.

