




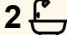

1 The Crescent, Paynesville

MODERN COMFORT, CLEVER DESIGN & A SLICE OF THE PAYNESVILLE LIFESTYLE

This contemporary home located in the prestigious Eagle Bay Estates, thoughtfully designed offering relaxed, low maintenance living just moments from the water. With double glazed windows, ducted heating, electric split system heating/cooling and day/night blinds throughout, year round comfort is a given.

As you step through the front door, you're welcomed by a wide hallway and a light filled second living area positioned opposite the master bedroom, the perfect spot for a quiet retreat, reading nook or home office. Further into the home, the open plan living zone unfolds with a well appointed stone top island kitchen, 900mm oven, walk-in pantry and a relaxed living and dining space. This second living area flows seamlessly from the kitchen, providing plenty of room for families and entertaining. Glass sliding doors open onto a covered pergola and low maintenance backyard, ideal for BBQ's and soaking up the sun.

The master bedroom features a ceiling fan, walk through robe and a spacious ensuite with twin basin vanity. Two additional bedrooms both with built-in robes are serviced by a central bathroom with a bath, shower and separate toilet. A walk-in linen closet, generous laundry,

3  2  2 

FOR SALE
\$650,000

AGENTS

Lorraine Edlington
0437 532 860
ledlington.paynesville@ljhooker.com.au

AGENCY

LJ Hooker Paynesville | Lakes Entrance
| Metung
(03) 5156 6166

All information contained therein is gathered from relevant third parties sources.
We cannot guarantee or give any warranty about the information provided.
Interested parties must rely solely on their own enquiries.



and practical layout complete the picture.

The double garage includes an automatic door and two personal access doors to both the backyard and the house, adding everyday convenience. Perfect for families, downsizers or investors, this home is ready to move into and enjoy, all within easy reach of Paynesville's relaxed coastal lifestyle.

MORE DETAILS

Property ID	MK1FCA
Property Type	House
Land Area	598 m2
Including	Ensuite
	Air Conditioning
	Ducted Heating
	Toilets (2)
	Dishwasher
	Outdoor Entertaining
	Floorboards
	Built-in-Robes
	Fully Fenced
	Remote Garage
	Solar Hot Water

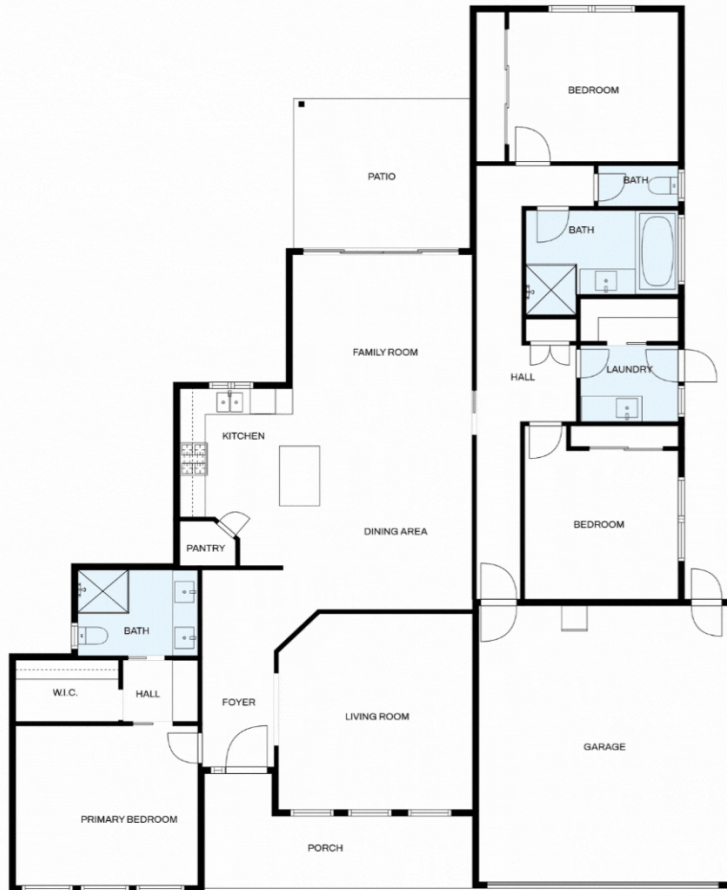
Lorraine Edlington 0437 532 860

Officer In Effective Control | Licensed Estate Agent |
ledlington.paynesville@ljhooker.com.au

LJ Hooker Paynesville | Lakes Entrance | Metung (03) 5156 6166

25A Esplanade, PAYNESVILLE VIC 3880
paynesville.ljhooker.com.au | paynesville@ljhooker.com.au





Whilst every attempt has been made to ensure the accuracy of this floorplan, measurements of doors, windows, rooms and any other items are approximate only. The producer or the agent cannot be held responsible for any errors, omissions or misstatements. This plan is for illustrative purposes only and should be used as such.