



SOLD

Payneham, 1/10 Henry Street

Well-sized unit in the heart of Payneham

Sold by Julian Rullo & Luke Mitchell of LJ Hooker Adelaide Metro



For Sale

\$495,000 - \$540,000

View

ljhooker.com.au/WNZFDG

Contact

Julian Rullo

0407846417

julian.rullo@ljhadelaidemetro.com.au

Luke Mitchell

0411 703 055

luke.mitchell@ljhadelaidemetro.com.au



Disclaimer: All information contained therein is gathered from relevant third parties sources.

We cannot guarantee or give any warranty about the information provided. Interested parties must rely solely on their own enquiries.

LJ Hooker Glynde
(08) 8336 3899

More About this Property

Property ID	WNZFDG
Property Type	Unit
Including	Ducted Cooling Ducted Heating Alarm Outdoor Entertaining Secure Parking

Julian Rullo 0407846417

Sales Consultant | julian.rullo@ljhadelaidemetro.com.au

Luke Mitchell 0411 703 055

Sales Representative | luke.mitchell@ljhadelaidemetro.com.au

LJ Hooker Glynde (08) 8336 3899

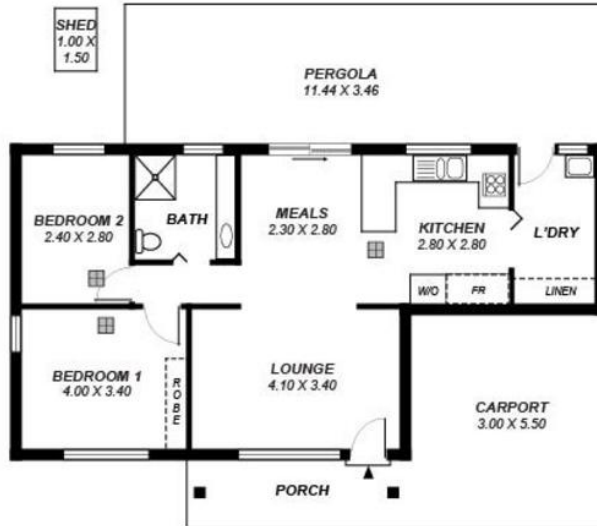
2a Portrush Road, PAYNEHAM SA 5070

glynde.ljhooker.com.au | stpeters@ljhadelaidemetro.com.au



LJ Hooker Glynde
(08) 8336 3899

Disclaimer: All information contained therein is gathered from relevant third parties sources.
We cannot guarantee or give any warranty about the information provided. Interested parties must rely solely on their own enquiries.



Area	m ²
Living:	85.07
Porch:	09.00
Carport:	16.50
Shed:	01.50
Pergola:	39.58
Total:	151.05

*This drawing is for illustration purposes only .
All measurements are approximate and details intended
to be relied upon should be independently verified.*