



Sold



2/5 Henry Street, Payneham

Sold by Luke Mitchell & Julian Rullo of LJ Hooker Adelaide Metro

- One owner home, offered to the market for the first time due to vendor interstate transfer.*

Prepared to be impressed by the spaciousness of this very private, community titled home, in a small group of three. It is a hidden sanctuary, securely tucked behind a gated entry.

With 2.7m ceilings spread across two levels, this home delivers remarkable flexibility and is ideal for families, professionals or those seeking low maintenance living without compromise.

With four bedrooms, dual living zones and a private garden retreat, it offers a lifestyle where space and serenity meet convenience.

Sunlight streams through the north facing open plan living, dining and kitchen areas, where modern design and generous proportions create a

All information contained therein is gathered from relevant third parties sources. We cannot guarantee or give any warranty about the information provided. Interested parties must rely solely on their own enquiries.

4 🏠 2 🚗 2 🚗

FOR SALE
Contact Agent

AGENTS

Luke Mitchell
0411 703 055
luke.mitchell@ljhadelaidemetro.com.au

Julian Rullo
0407846417
julian.rullo@ljhadelaidemetro.com.au

AGENCY

LJ Hooker St Peters
(08) 8362 8008

haven of comfort and tranquillity for effortless entertaining. Sliding doors lead to the paved alfresco entertaining area with a large lawn area ideal for children and furry friends to play.

The kitchen with garden views is finished with granite benchtops, abundant storage, and a layout that invites both everyday living and weekend gatherings. This kitchen is designed for connection.

Upstairs, the enormous master bedroom suite is a true haven, with walk-in robe and ensuite. A central second living area offers quiet separation for relaxation or family time and leads to two additional bedrooms both with built-ins, plus a versatile fourth bedroom currently a study providing options for use also with built-ins.

The stunning rear garden is framed by manicured greenery and a towering wall ensuring privacy & security.

What We Love:

North facing open plan living and dining

Dual living zones across both levels

- maintenance lifestyle with private garden retreat

Modern kitchen with granite benchtops, gas cooktop and excellent storage

Spacious master suite with walk-in robe and ensuite

Chic modern bathrooms, the main with relaxing bath

Double garage with secure internal access

Under-stair storage with potential to convert into a wine room

Ducted reverse cycle air conditioning and watering system

Peace of mind with gated privacy and security

Zone for Marryatville High and Felixstow Primary, this home is perfectly positioned to local shops, buzzing cafes and excellent transport options. All combining to ensure everyday ease and long-term lifestyle appeal.

Purchasing this property as an investment? Talk with Kirsty Clark from our PM team and see why our Property Management department is #1 amongst all the LJ Hooker offices Worldwide.

- * All information provided has been obtained from sources we believe to be accurate, however, we cannot guarantee the information is accurate and we accept no liability for any errors or omissions (including but not limited to a property's land size, floor plans and size, building age and condition). Interested parties should make their own enquiries and obtain their own legal advice.

Should this property be scheduled for auction, the Vendor's Statement (Form 1) will be available at the LJ Hooker St Peters office for 3 consecutive business days immediately preceding the auction and at the auction for 30 minutes before it starts.

RLA 61345 RLA 282965 RLA 231015

MORE DETAILS

Property ID 2DHVFDZ
Property Type House
Including Ensuite

Luke Mitchell 0411 703 055

Sales Consultant | luke.mitchell@ljhadelaidemetro.com.au

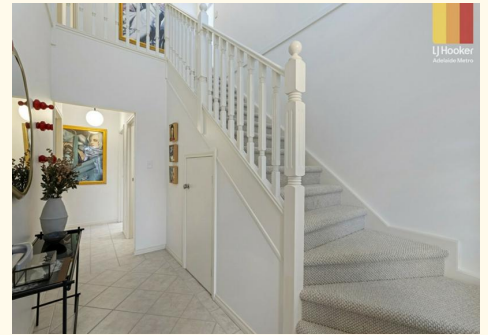
Julian Rullo 0407846417

Sales Consultant | julian.rullo@ljhadelaidemetro.com.au

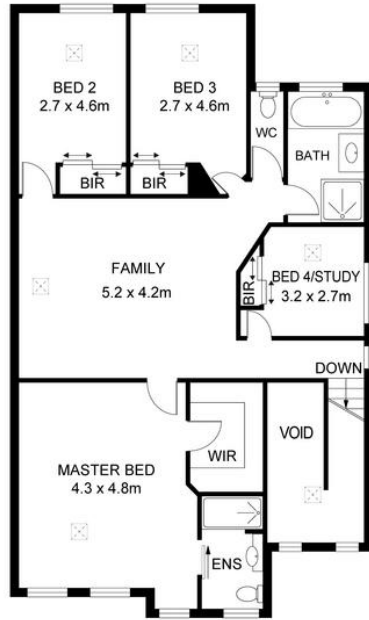
LJ Hooker St Peters (08) 8362 8008

2a Portrush Road, PAYNEHAM SA 5070

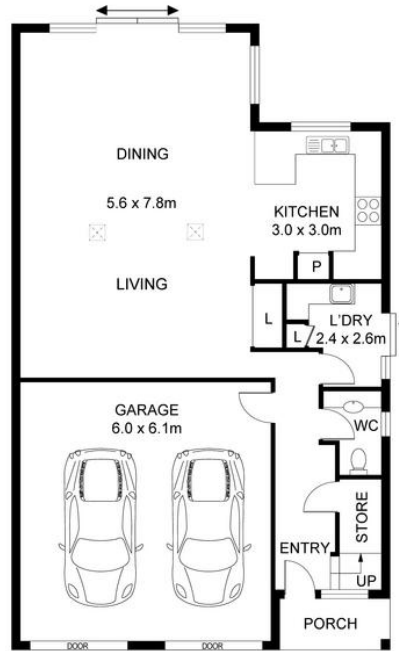
stpeters.ljhooker.com.au | stpeters@ljhadelaidemetro.com.au



All information contained therein is gathered from relevant third parties sources.
We cannot guarantee or give any warranty about the information provided.
Interested parties must rely solely on their own enquiries.



UPPER LEVEL



GROUND LEVEL

2/5 HENRY STREET, PAYNEHAM

DISCLAIMER

PLANS SHOWN ARE FOR MARKETING PURPOSES ONLY. ALL DIMENSIONS ARE APPROXIMATE AND NOT TO SCALE. THEY ARE SUBJECT TO ERRORS AND INACCURACIES AND NO LIABILITY WILL BE ACCEPTED. INTERESTED PARTIES SHOULD MAKE THEIR OWN ENQUIRIES.

IMAGES AND FLOORPLAN BY:
IN-HOUSE
IMAGING
inhouseimaging.com.au