



6 Grovedale Court, Parkwood

GREAT VALUE IN PRIME LOCATION!


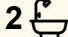
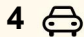
This well-presented home offers comfortable living in a quiet street, backing directly onto the peaceful Driftwood Park reserve. With a practical layout, modern features, and a private outlook, it's the ideal opportunity for first home buyers, downsizers, or investors.

Property Features:

- 3 spacious bedrooms, including master with ensuite
- Open-plan living and dining filled with natural light
- Modern interiors with air conditioning for year-round comfort
- 5kW solar system to keep energy costs down
- Outdoor entertaining area overlooking the private backyard and parkland
- " Flat, fully fenced block —ideal for children and pets
- Two car garage conversion into home office & storage

Lifestyle & Location:

- Situated in the heart of Parkwood, this home is surrounded by excellent amenities:
- " Backs onto Driftwood Park reserve —enjoy walking trails and a quiet leafy outlook
- Minutes to Griffith University, Gold Coast University Hospital & the G:link light rail

3  2  4 

FOR SALE
UNDER CONTRACT

AGENTS

Aaron Dobson
0406 976 482
adobson@ljhteam.com.au

Kylie Taggart
0413 104 444
kylie.taggart@ljhteam.com.au

AGENCY

LJ Hooker Pacific Pines | Helensvale
(07) 5573 2099

All information contained therein is gathered from relevant third parties sources.
We cannot guarantee or give any warranty about the information provided.
Interested parties must rely solely on their own enquiries.

 **LJ Hooker**

- Easy access to Harbour Town, Westfield Helensvale & local shopping villages
- Nearby schools, parks, golf courses, and sporting facilities
- Quick access to the M1 for Brisbane or the Gold Coast beaches

With its quiet reserve backdrop, energy-efficient solar system, and central location, this property is perfect for anyone seeking value and lifestyle in one.

Contact us today to arrange your inspection.

Disclaimer:

All information contained is gathered from relevant third party sources. We cannot guarantee or give any warranty about the information provided. Interested parties must rely solely on their own enquiries.

MORE DETAILS

Property ID	35NNGMK
Property Type	House
Land Area	493 m2

Aaron Dobson 0406 976 482

Sales Specialist | adobson@ljhteam.com.au

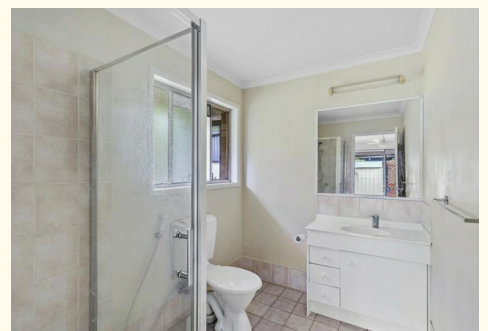
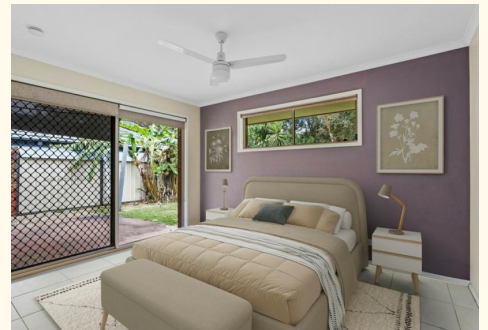
Kylie Taggart 0413 104 444

Sales Specialist | kylie.taggart@ljhteam.com.au

LJ Hooker Pacific Pines | Helensvale (07) 5573 2099

8 Discovery Drive, HELENSVALE QLD 4212

pacificpines-helensvale.ljhooker.com.au | admin@ljhteam.com.au





6 GROVEDALE COURT, PARKWOOD



Internal: 130m² | External: 43m² | Total: 173m²

Whilst every attempt has been made to ensure the accuracy of the floor plan contained here, measurements of doors, windows, rooms and any other item are approximate and no responsibility is taken for any error, omission, or misstatement. This plan is for illustrative purposes only and should only be used as such by any prospective purchaser.

