

## Parkside, Lot 2/283 Fullarton Road

Coming Soon - Brand New Townhouse in Sought After Suburb

Brand new home packed with quality finishes, spread over two levels. Due to commence construction soon.

Lot 1 - Not Available

Lot 2 - \$1,530,000

Lot 3 - Under Contract

Lot 4 - Not Available

Located within the sought after Glenunga International High School catchment area, Parkside offers its residents a quick commute into the CBD, either 10 minutes by car or by taking advantage of the convenient public transport. You'll be positioned within an arms reach of Frewville Foodland and Arkaba Village and local cafes and restaurants.

3 2 2

**For Sale**  
\$1.53M

**View**  
By Appointment

**Contact**  
**Lisa Xu**  
0432 235 818  
lisax@ljm.com.au



**Disclaimer:** All information contained therein is gathered from relevant third parties sources. We cannot guarantee or give any warranty about the information provided. Interested parties must rely solely on their own enquiries.

**LJ Hooker Mile End | Woodville**  
**(08) 8352 7111**

First Home Owners Grant\* is available, please refer to the Revenue SA website for eligibility criteria and further information.

## Key Features

- Modern Facade
- High quality finishes
- Alfresco with gas provision
- Barbecue included with dwellings 2
- Ceiling mounted heater included in alfresco
- Electric built in fire place in living room
- Open plan living and dining area
- Kitchen with top quality Smeg appliances including a 900mm 5 burner gas cooktop and stone bench tops
- Master bedroom with ensuite and walk in wardrobe
- Bedrooms two and three with built in wardrobes
- Ground floor with 3m high ceilings
- Feature pendant lighting above the kitchen island bench and in the dining room
- Intercom system
- 2m high glass shower screen
- Hybrid herringbone timber flooring to main living areas and carpets to bedrooms
- Ducted reverse cycle air conditioning with zone controls
- Landscaped garden with irrigation
- Off street parking available
- New fencing

\*The First Home Owner's Grant is offered by RevenueSA and is subject to eligibility criteria as determined by RevenueSA. Prospective purchasers must make their own enquiries.

The vendor and the agent make no representation in relation to the Property or Purchaser's eligibility to obtain the grant.

Note: All render images are artistic impressions only which may not represent the exact completed product. The selections shown are for illustrative purposes only and may differ to the final product. Purchasers are to make their own enquiries regarding the inclusions and specifications for each dwelling.

Curtains and window treatments are not included.



**LJ Hooker Mile End | Woodville**  
**(08) 8352 7111**

**Disclaimer:** All information contained therein is gathered from relevant third parties sources. We cannot guarantee or give any warranty about the information provided. Interested parties must rely solely on their own enquiries.

# More About this Property

Property ID	XBNHDM
Property Type	House
Including	Ensuite Air Conditioning Built-in-Robes Close to Schools Close to Shops Close to Transport Heating Liveability

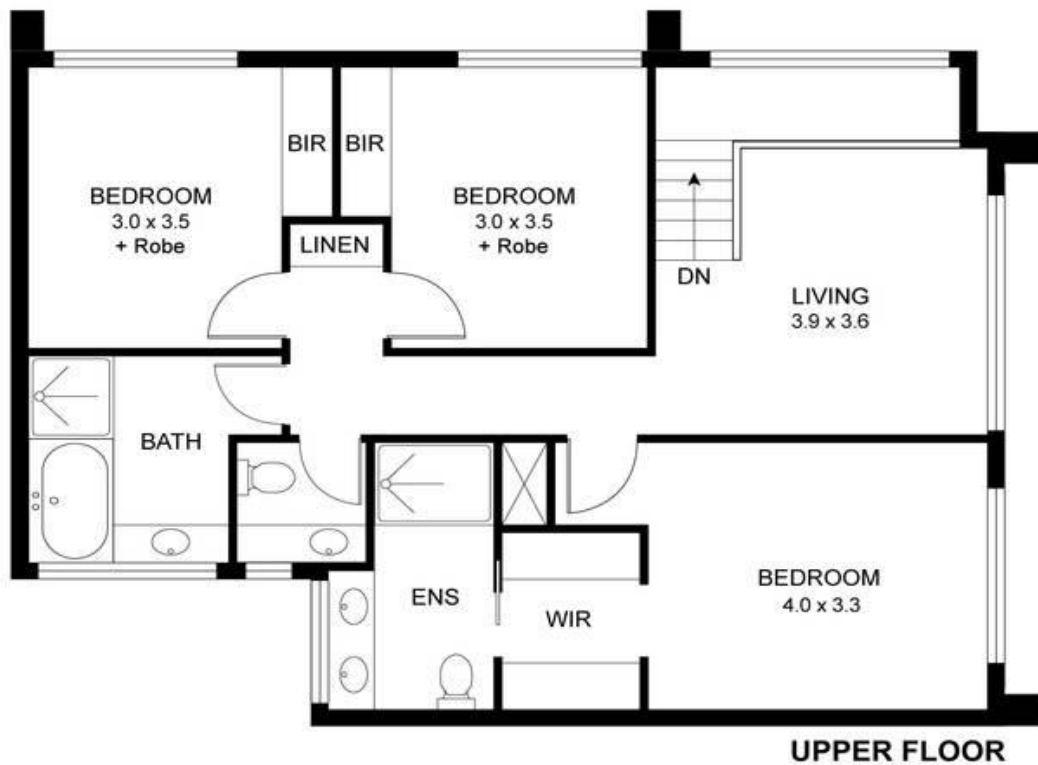
**Lisa Xu 0432 235 818**  
Sales Executive | lisax@ljwt.com.au

**LJ Hooker Mile End | Woodville (08) 8352 7111**  
206A Henley Beach Road, TORRENSVILLE SA 5031  
mileendwoodville.ljhooker.com.au | admin@ljhookermileend.com.au



**LJ Hooker Mile End | Woodville**  
**(08) 8352 7111**

**Disclaimer:** All information contained therein is gathered from relevant third parties sources.  
We cannot guarantee or give any warranty about the information provided. Interested parties must rely solely on their own enquiries.



Residence 1  
283 Fullarton Road, PARKSIDE

This drawing is for illustration purposes only. All measurements are internal and approximate. Details intended to be relied upon should be independently verified.