



Parkside, 106/293 Fullarton Road

Spacious apartment in a prized location

Nestled in the highly sought-after Eastern Suburbs of Adelaide, this apartment combines luxury and space in a secure building-perfect for those seeking a low-maintenance, lock-up-and-leave lifestyle close to the CBD.

Designed for comfortable living, the apartment features a spacious open-plan living and dining area that flows onto a generous balcony. The well-appointed kitchen includes a gas cooktop, dishwasher, and ample cupboard space, while the adjacent laundry offers convenient floor-to-ceiling storage.

All three bedrooms are generously sized, each fitted with built-in wardrobes and split-system air conditioning. The third bedroom also enjoys access to a private balcony, with all bedrooms serviced by a well-positioned central bathroom.

Enjoy the convenience of a short stroll to Frewville Foodland and Arkaba Village Shopping



Disclaimer: All information contained therein is gathered from relevant third parties sources. We cannot guarantee or give any warranty about the information provided. Interested parties must rely solely on their own enquiries.



For Sale
Contact Agent

View
ljhooker.com.au/XF7HDM

Contact
Lisa Xu
0432 235 818
lisax@ljmw.com.au

LJ Hooker Mile End | Woodville
(08) 8352 7111

Centre. The CBD is just a 10-minute drive away, or take advantage of the nearby bus stop for easy public transport access. You'll also have an abundance of cafes, restaurants, and takeaway options at your doorstep. Families will appreciate the excellent local schooling options, including Parkside Primary School, Glenunga International High School, and Urrbrae Agricultural High School.

Key Features

- 3 bedrooms, all with wardrobes and split system air conditioning
- Ensuite bathroom to master bedroom
- Bedroom 3 with private balcony
- Central bathroom with large window
- Separate laundry with storage
- Open plan living and meals area with AC and balcony
- Spacious kitchen with dishwasher, gas cooktop and ample bench and cupboard space
- Floating floorboards to living areas, cosy carpets in bedrooms
- Stone benches to kitchen, laundry and bathrooms
- Two allocated car parks, within a car stacker

Title: Strata Titled

Year built: 2022

Council: City of Unley

Council rates: \$1,122.25pa (approx)

ESL: \$136.85pa (approx)

SA Water & Sewer supply: \$171.90pq (approx)

All information provided including, but not limited to, the property's land size, floorplan, floor size, building age and general property description has been obtained from sources deemed reliable. However, the agent and the vendor cannot guarantee the information is accurate and the agent, and the vendor, does not accept any liability for any errors or oversights. Interested parties should make their own independent enquiries and obtain their own advice regarding the property. Should this property be scheduled for Auction, the Vendor's Statement will be available for perusal by members of the public 3 business days prior to the Auction at the offices of LJ Hooker Mile End at 206a Henley Beach Road, Torrensville and for 30 minutes prior to the Auction at the place which the Auction will be conducted. RLA 242629



LJ Hooker Mile End | Woodville
(08) 8352 7111

Disclaimer: All information contained therein is gathered from relevant third parties sources. We cannot guarantee or give any warranty about the information provided. Interested parties must rely solely on their own enquiries.

More About this Property

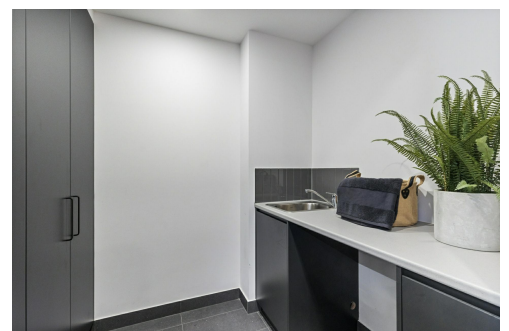
Property ID	XF7HDM
Property Type	Apartment
Including	Ensuite Air Conditioning Alarm Built-in-Robes Carpeted Close to Schools Close to Shops Close to Transport

Lisa Xu 0432 235 818

Sales Executive | lisax@ljmw.com.au

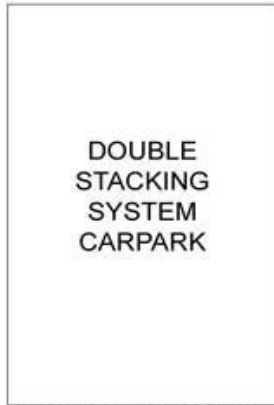
LJ Hooker Mile End | Woodville (08) 8352 7111

206A Henley Beach Road, TORRENSVILLE SA 5031
mileendwoodville.ljhooker.com.au | admin@ljhookermileend.com.au

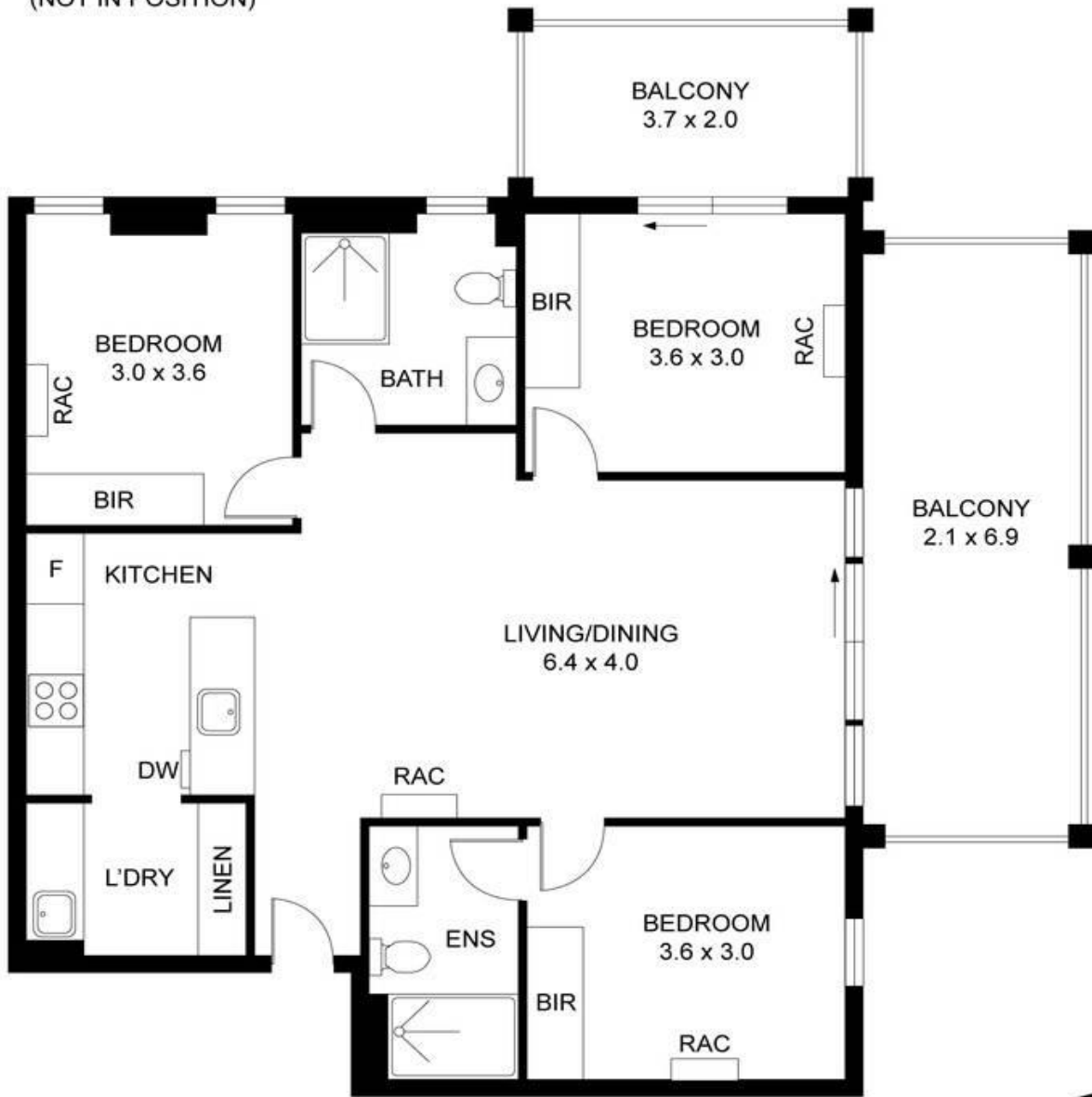


Disclaimer: All information contained therein is gathered from relevant third parties sources.
We cannot guarantee or give any warranty about the information provided. Interested parties must rely solely on their own enquiries.

**LJ Hooker Mile End | Woodville
(08) 8352 7111**



(NOT IN POSITION)



This drawing is for illustration purposes only. All measurements are internal and approximate. Details intended to be relied upon should be independently verified.