

Parkside, 15 Cain Street

Style Meets Character

Step into this beautifully designed home where character charm meets modern convenience. Featuring three spacious double bedrooms, a contemporary kitchen, a modern bathroom with a bath, a separate lounge, and a sun-filled conservatory, this home offers both comfort and style. Enjoy seamless indoor-outdoor living with the kitchen opening onto a private deck, perfect for entertaining, and a generously sized backyard surrounded by lush gardens. A street-line garage provides easy access and additional storage. Conveniently located near schools and town, this home is the perfect blend of tranquility and accessibility.

Features:

- Three double bedrooms
- Gas stove
- Electric hot water
- Conservatory



Disclaimer: All information contained therein is gathered from relevant third parties sources. We cannot guarantee or give any warranty about the information provided. Interested parties must rely solely on their own enquiries.

3

1

1

For Sale
Negotiation

View
By Appointment

Contact
Ben Groundwater
027 415 6405
ben.timaru@ljhooke.co.nz
Joelle Snook
027 844 5432
joelle.timaru@ljhooke.co.nz

LJ Hooker Timaru
(03) 688 3029
Enting Real Estate Limited

- Single garage
- 931m2 section
- Separate laundry

Disclaimer:

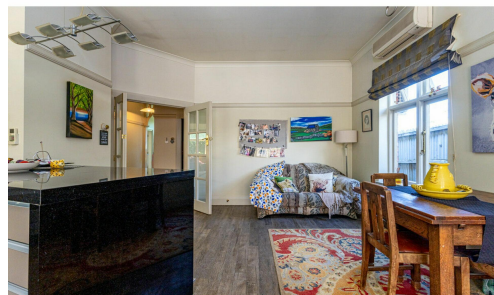
This information has been supplied by the owners and Corelogic. LJ Hooker Timaru, Geraldine and Waimate are merely passing over this information as supplied to us. We cannot guarantee its accuracy and reliability as we have not checked, audited or reviewed the information. All intending purchasers are advised to conduct their own due diligence investigation into this information. To the maximum extent permitted by law, we do not accept any responsibility to any part for the accuracy or use of the information herein. Enting Real Estate Limited Licensed (REAA 2008).

More About this Property

Property ID	15GTGTA
Property Type	House
House Size	150 m2
Land Area	931 m2
Licensed Real Estate Agents (REAA2008)	

Ben Groundwater 027 415 6405
 Property Consultant | ben.timaru@ljhooker.co.nz
Joelle Snook 027 844 5432
 Property Consultant | joelle.timaru@ljhooker.co.nz

LJ Hooker Timaru (03) 688 3029
 Enting Real Estate Limited
 51 Church Street, TIMARU 7910
 timaru.ljhooker.co.nz | timaru@ljhooker.co.nz



Disclaimer: All information contained therein is gathered from relevant third parties sources. We cannot guarantee or give any warranty about the information provided. Interested parties must rely solely on their own enquiries.

LJ Hooker Timaru
(03) 688 3029
 Enting Real Estate Limited