



Parkside, 1/2 Napier Street

Easy living

This tidy two-bedroom unit offers easy living in a prime location. The kitchen opens into the living area, creating a warm and welcoming space that is heated by a heat pump to keep you comfortable year round. A well-kept bathroom with a combined toilet adds practicality, while a small outdoor patio provides the perfect spot to relax with a coffee or enjoy the fresh air. You'll also find your own easy-care garden bed, giving you the chance to enjoy a touch of greenery without the hard work.

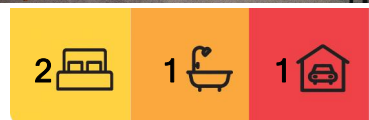
Situated within walking distance to Roncalli College, Sacred Heart Primary, the Timaru CBD, Countdown supermarket and so much more, this unit places everything you need right at your doorstep. Whether you're a first-home buyer, downsizer, or investor, this property combines comfort and convenience in one appealing package at a great price!

Features:

- Two bedrooms



Disclaimer: All information contained therein is gathered from relevant third parties sources. We cannot guarantee or give any warranty about the information provided. Interested parties must rely solely on their own enquiries.



For Sale
Enquiries Over \$290,000

View
Sat 23rd Aug @ 10:45AM - 11:15AM

Contact
Ben Groundwater
027 415 6405
ben.timaru@ljhooker.co.nz

Joelle Snook
027 844 5432
joelle.timaru@ljhooker.co.nz

LJ Hooker Timaru
(03) 688 3029
Enting Real Estate Limited

- Heat pump
- Outdoor patio

Disclaimer:

This information has been supplied by the owners and Corelogic. LJ Hooker Timaru, Geraldine and Waimate are merely passing over this information as supplied to us. We cannot guarantee its accuracy and reliability as we have not checked, audited or reviewed the information. All intending purchasers are advised to conduct their own due diligence investigation into this information. To the maximum extent permitted by law, we do not accept any responsibility to any part for the accuracy or use of the information herein. Enting Real Estate Limited Licensed (REAA 2008).

More About this Property

Property ID	15MEGTA
Property Type	BlockOfUnits
House Size	70 m2
Licensed Real Estate Agents (REAA2008)	

Ben Groundwater 027 415 6405

Property Consultant | ben.timaru@ljhooker.co.nz

Joelle Snook 027 844 5432

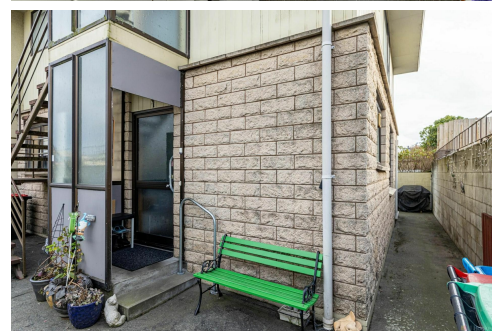
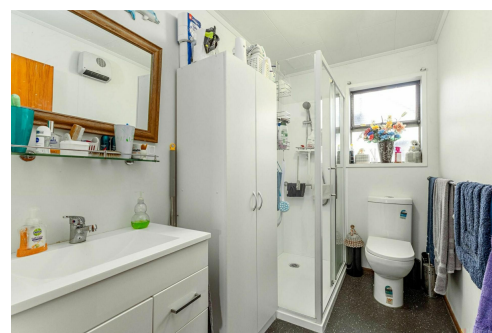
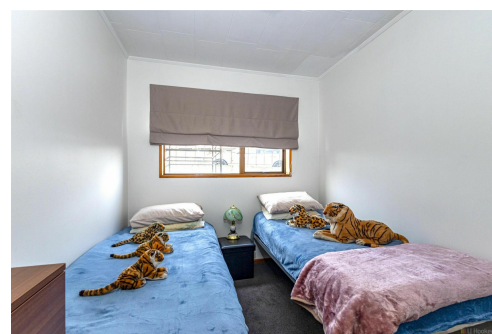
Property Consultant | joelle.timaru@ljhooker.co.nz

LJ Hooker Timaru (03) 688 3029

Enting Real Estate Limited

51 Church Street, TIMARU 7910

timaru.ljhooker.co.nz | timaru@ljhooker.co.nz



Disclaimer: All information contained therein is gathered from relevant third parties sources. We cannot guarantee or give any warranty about the information provided. Interested parties must rely solely on their own enquiries.

LJ Hooker Timaru
(03) 688 3029
 Enting Real Estate Limited