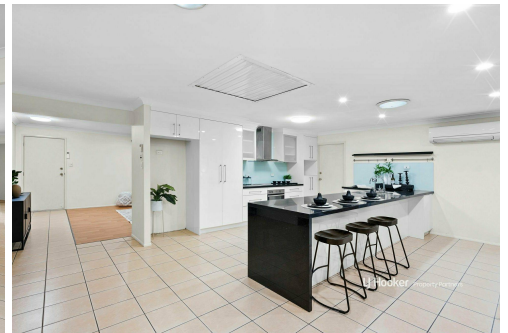
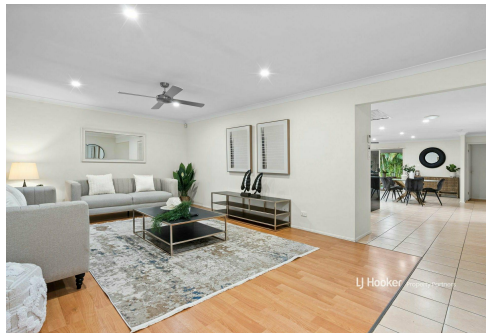


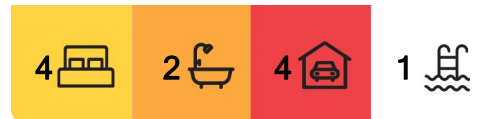


LJ Hooker Property Partners



Parkinson, 56 Gibraltar Circuit

SOLD BY THE FLORENTZOS TEAM



Tucked away in a peaceful, tree-lined street, this beautifully presented home is the perfect solution for families seeking a retreat lifestyle in the heart of convenience. Backing onto serene bushland with no rear neighbours, it offers multiple living zones, an entertainer's patio, and a sparkling pool - all within the prestigious Stretton College catchment.

With secure gated entry, generous parking, and effortless access to schools, shops, and transport, this is a rare opportunity to secure a home that truly has it all.

Top 5 Features at a Glance:

1. Prestigious location - Stretton College catchment, walk to city buses, parks & enjoy quick access to major shopping centres & motorways.
2. Four spacious bedrooms - all with built-ins, A/C & fans, including a master with walk-in robe & ensuite.
3. Multiple living areas - open-plan family & dining plus a separate lounge for added



Disclaimer: All information contained therein is gathered from relevant third parties sources. We cannot guarantee or give any warranty about the information provided. Interested parties must rely solely on their own enquiries.

For Sale
Please Call

View
ljhooker.com.au/B2TQF4R

Contact
Peter Florentzos
0414 311 526
peterflorentzos@ljhpp.com.au

Ling Li
0403 192 378
lingli@ljhpp.com.au

LJ Hooker Property Partners
07 3344 0288

versatility.

4. Private outdoor entertaining - covered patio overlooks the pool, large backyard & a serene bushland backdrop.

5. Securely gated & well-equipped - double garage, extra parking under shade sails & side access for boat/caravan.

Designed for Effortless Family Living

With a bright and airy layout, this home delivers both space and functionality. The open-plan living and dining area is the heart of the home, effortlessly flowing into a stylish second lounge - perfect for movie nights. Air conditioning and ceiling fans ensure year-round comfort, while large windows frame peaceful views of the lush backyard.

Chef's Kitchen with Space & Style

Cooking for family and friends is a breeze in the sleek modern kitchen, complete with a huge stone island, premium appliances, and an abundance of storage. The open-plan design means you can chat with guests while preparing meals, making it the true hub of the home. Not to mention, there's internal access straight from the garage, priceless for bringing in groceries and shopping.

Outdoor Entertaining at Its Finest

Step outside to your own private oasis, where a covered patio overlooks a sparkling inground pool and beautifully landscaped gardens. Whether it's a weekend BBQ or an evening drink under the stars, this space is designed for relaxed outdoor living. With a fully fenced backyard and plenty of lawn for kids and pets, it's an entertainer's dream.

Spacious Bedrooms & Private Master Retreat

Four generous bedrooms offer built-in robes and plenty of natural light, while the master suite enjoys extra privacy with its own ensuite and walk-in robe. The main bathroom is appointed with a separate bath and shower, perfect for busy households.

Prime Location with Everything at Your Doorstep

Set in one of Parkinson's most sought-after pockets, this home is a short stroll to local parks, 10min walk to buses, and a short drive to major shopping centres, including Calamvale Square and Sunnybank Hills Shoppingtown. Families will love the zoning for Stretton State College, while easy access to the Gateway Motorway ensures a seamless commute to the city or coast.

Other notable features include:

- 5x air conditioners & Cardiff Air cooling system for year-round comfort-
- Shade sail over pool, pool cover & pool equipment
- Side gate access for cars, boat or caravan
- 2x car garage + 2x car shade sail in front
- Fully fenced & secure with an automatic gate for privacy & safety
- Low-maintenance gardens with plenty of space for kids or pets to play
- Solar panels for energy efficiency & reduced electricity costs

A rare find in a blue-chip location, this home is a must-see! Contact Peter Florentzos and Ling Li today to arrange an inspection.

AEAF Investments Pty Ltd T/A Peter Florentzos Properties with Sunnybank Districts P/L



LJ Hooker Property Partners
07 3344 0288

Disclaimer: All information contained therein is gathered from relevant third parties sources. We cannot guarantee or give any warranty about the information provided. Interested parties must rely solely on their own enquiries.

All information contained herein is gathered from sources we consider to be reliable. However, we cannot guarantee or give any warranty about the information provided and interested parties must solely rely on their own enquiries.

More About this Property

Property ID	B2TQF4R
Property Type	House
Land Area	660 m2
Including	Ensuite Air Conditioning Toilets (2) Pool Dishwasher Outdoor Entertaining Built-in-Robes Secure Parking Fully Fenced Solar Panels

Peter Florentzos 0414 311 526

Partner and Agent/Independent Contractor | peterflorentzos@ljhpp.com.au

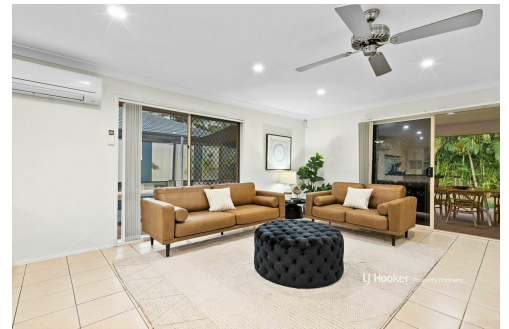
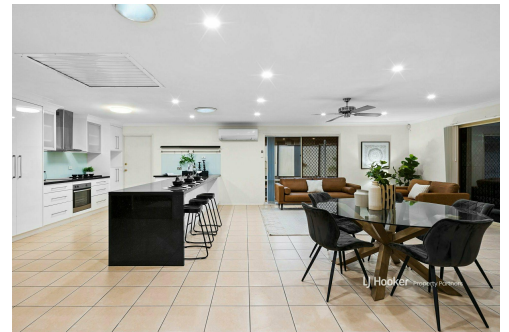
Ling Li 0403 192 378

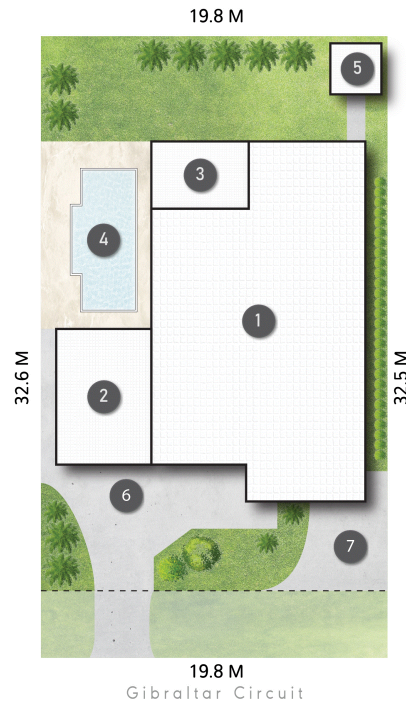
Sales Associate to Peter Florentzos | lingli@ljhpp.com.au

LJ Hooker Property Partners 07 3344 0288

25 Pinelands Road, SUNNYBANK HILLS QLD 4109

propertypartners.ljhooker.com.au | sunnybankhills@ljhpp.com.au





- LEGEND**
- 1 RESIDENCE
 - 2 GARAGE
 - 3 PATIO
 - 4 POOL
 - 5 SHED
 - 6 COVERED PARKS
 - 7 OFF-STREET PARKING



56 Gibraltar Circuit **PARKINSON**

4 Beds | 2 Bathrooms | 4 Car Spaces | 226m² Living Area | 660m² Total Area

LJ Hooker Property Partners

All dimensions are approximate; they are subject to errors and inaccuracies and no liability will be accepted. Plans are shown for marketing purposes only.

LJ Hooker

LJ Hooker Property Partners
07 3344 0288

Disclaimer: All information contained therein is gathered from relevant third parties sources. We cannot guarantee or give any warranty about the information provided. Interested parties must rely solely on their own enquiries.