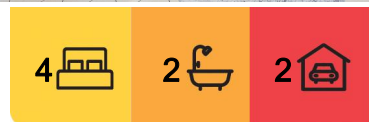


Parkinson, 18 Pinedale Crescent

Modern Comfort Meets Timeless Style in a Tranquil Family Pocket

Discover the perfect balance of peace, convenience, and modern family living in this beautifully maintained lowset home in sought-after Parkinson. Positioned on an elevated 450 sqm block in a quiet street, this rendered residence boasts a functional layout with multiple living areas and a classy, low maintenance interior. Just a short walk to Parkinson Plaza, local parks, buses, and childcare, and a quick drive to schools and major shopping hubs, this is an idyllic setting for families or commuters seeking connection without the chaos.

Inside, the home offers plenty of room for relaxation and entertainment, with a carpeted formal lounge and a spacious tiled family lounge and meals area. Freshly painted just two years ago, the interior feels bright and pristine, complemented by a generous alfresco patio perfect for hosting weekend barbecues or enjoying peaceful evenings in the fenced backyard. With four well-sized bedrooms including a master with pristine ensuite and his-



Auction
Sat 6th Sep @ 11:30AM

View
By Appointment

Contact
Victor Lai
0450 836 288
victorlai@ljhpp.com.au



LJ Hooker Property Partners
07 3344 0288

Disclaimer: All information contained therein is gathered from relevant third parties sources. We cannot guarantee or give any warranty about the information provided. Interested parties must rely solely on their own enquiries.

and-hers robes, this residence delivers the comfort and space your family deserves.

Top Features:

- Quiet, family-friendly pocket, walking distance to shops, parklands, buses, and childcare, plus easy access to schools, medical services, and major roads
- Separate living zones including carpeted formal lounge, tiled family area and meals area for versatile family living
- Fresh, neutral interior freshly painted two years ago, creating a clean, move-in ready atmosphere
- Covered alfresco entertaining area overlooks the spacious backyard perfect for pets and play
- Four built-in bedrooms with fans, including a master with dual mirrored robes and sparkling ensuite

Parkinson is a suburb that seamlessly blends suburban serenity with everyday convenience. This home is perfectly positioned for young families, offering easy walkability to lush parklands, local shops, and childcare. Public transport is just around the corner, while popular schools and additional shopping centres are only minutes away by car, making daily life a breeze.

- 350 m to Blairmont Street Park
- 400 m to Ruth Firth Park
- 450 m to Parkinson World of Learning
- 550 m to Parkinson Plaza
- 650 m to bus stop
- 2.2 km to Algester State School
- 2.3 km to Calamvale Marketplace
- 2.4 km to Calamvale Community College

Tucked away on a peaceful, low-traffic street, this modern rendered home offers charming street presence with its wide driveway, neat, elevated position, and tree-dotted front lawn. The low maintenance 450 sqm block offers just the right balance of outdoor space and manageable upkeep, perfect for busy families or downsizers wanting to enjoy life with less hassle.

Step through the front door into a tiled foyer, where a chic wall cutout sets the tone for the home's clean and modern design. To your left, a cosy carpeted lounge offers the ideal spot for curling up with a good book, hosting formal guests, or even working from home in comfort. Down the hallway, the family lounge and meals area present a relaxed zone for everyday living, fitted with a ceiling fan and defined by elegant border walls.

Designed to bring everyone together, the original kitchen sits at the heart of the home. Its long dining bar invites casual meals and morning coffees, while the ample neutral cabinetry and quality electric appliances ensure everything you need is within easy reach for family dinners or weekend baking sessions.

Glass sliding doors lead you out to the generous covered patio where outdoor meals, celebrations, or peaceful evenings can be enjoyed. Overlooking the secure, grassy backyard, this is a space with endless possibilities for play, pets, or simply soaking in the



LJ Hooker Property Partners
07 3344 0288

Disclaimer: All information contained therein is gathered from relevant third parties sources. We cannot guarantee or give any warranty about the information provided. Interested parties must rely solely on their own enquiries.

sunshine.

All four bedrooms are comfortably carpeted and feature ceiling fans and built-in robes for crisp comfort and storage. The master suite is a secluded retreat with two mirrored sliding robes and a pristine ensuite, offering a private oasis for parents. The remaining bedrooms are serviced by a central bathroom with a separate wash area and water closet, making school mornings run smoothly.

Modern yet classic, fresh yet welcoming - this spacious lowset offers the ideal home base for growing families or savvy buyers seeking comfort in a prime Parkinson pocket. Don't miss the chance to make it yours.

Contact Victor Lai today to register your interest or arrange an inspection. This pristine home is going to auction - secure your slice of peaceful suburban living while you can.

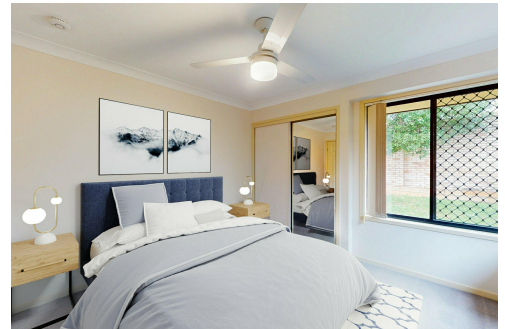
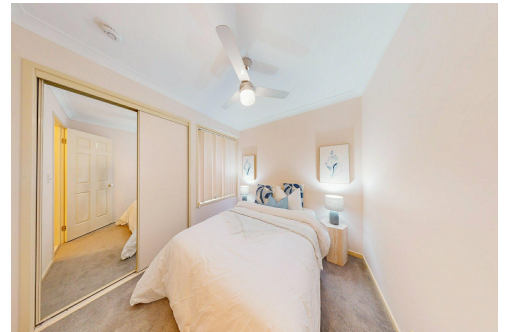
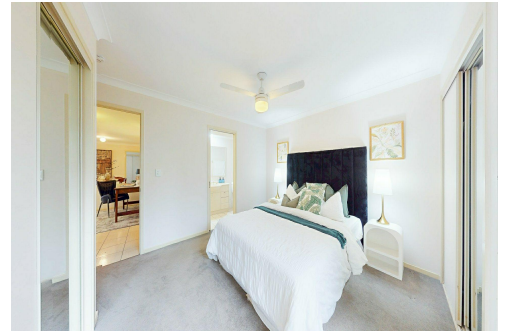
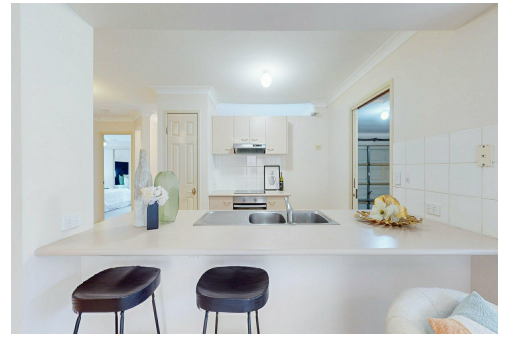
All information contained herein is gathered from sources we consider to be reliable. However, we cannot guarantee or give any warranty about the information provided and interested parties must solely rely on their own enquiries.

More About this Property

Property ID	B3BHF4R
Property Type	House
Land Area	450 m2
Including	Ensuite Toilets (1) Outdoor Entertaining Fully Fenced Remote Garage

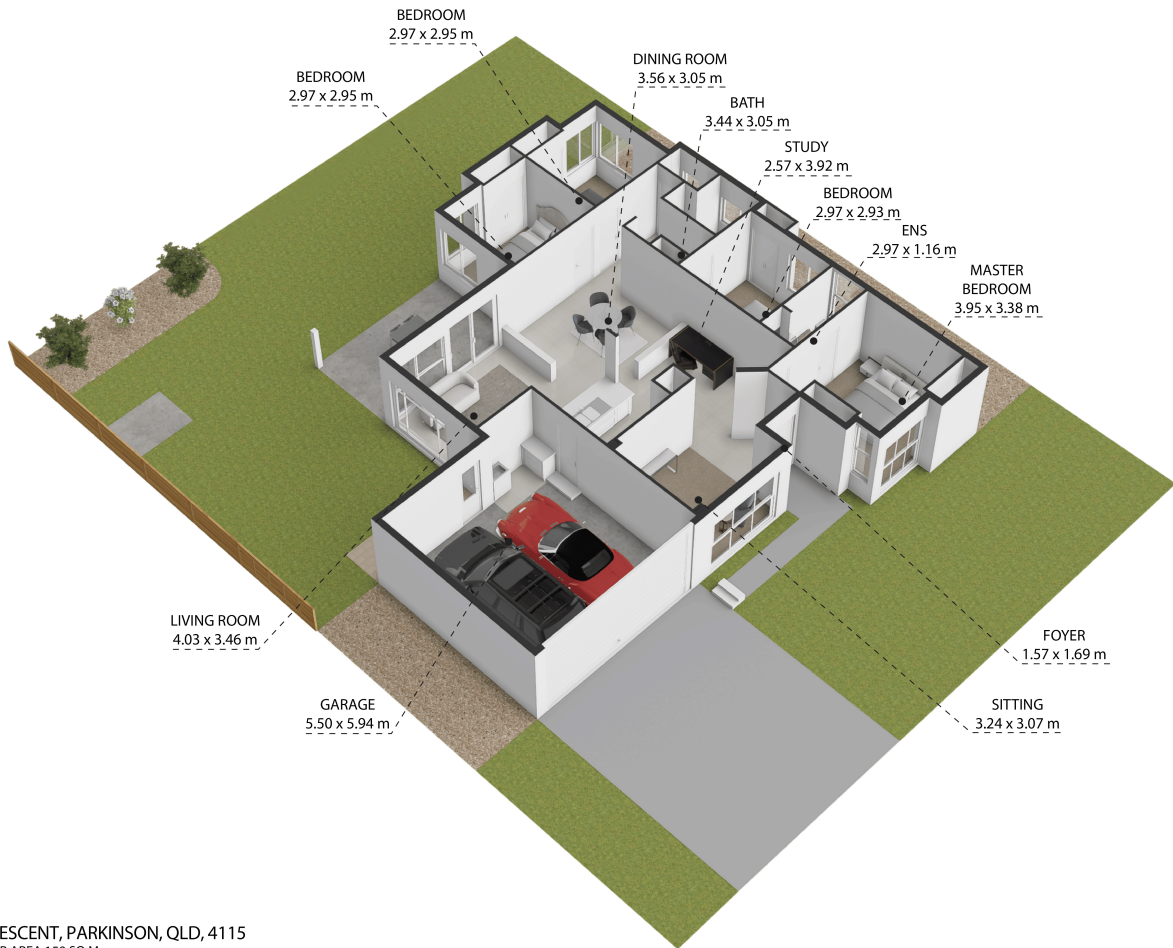
Victor Lai 0450 836 288
Business Development Manager | victorlai@ljhpp.com.au

LJ Hooker Property Partners 07 3344 0288
25 Pinelands Road, SUNNYBANK HILLS QLD 4109
propertypartners.ljhooker.com.au | sunnybankhills@ljhpp.com.au



Disclaimer: All information contained therein is gathered from relevant third parties sources. We cannot guarantee or give any warranty about the information provided. Interested parties must rely solely on their own enquiries.

LJ Hooker Property Partners
07 3344 0288



BEDROOM
2.97 x 2.95 m

BEDROOM
2.97 x 2.95 m

DINING ROOM
3.56 x 3.05 m

BATH
3.44 x 3.05 m

STUDY
2.57 x 3.92 m

BEDROOM
2.97 x 2.93 m

ENS
2.97 x 1.16 m

MASTER
BEDROOM
3.95 x 3.38 m

LIVING ROOM
4.03 x 3.46 m

GARAGE
5.50 x 5.94 m

FOYER
1.57 x 1.69 m

SITTING
3.24 x 3.07 m

18 PINEDALE CRESCENT, PARKINSON, QLD, 4115

TOTAL APPROX. FLOOR AREA 159 SQ.M

Whilst every attempt has been made to ensure the accuracy of the floor plan contained here, measurements of doors, windows, rooms and any other items are approximate and no responsibility is taken for any error, omission, or misstatement. This plan is for illustrative purposes only and should be used as such by any prospective purchaser.