



11 Swanbrook Place, Parkinson

A Home That Feels Like a Dream - Luxuriously Renovated & Ready to Move In

Auction Location: Onsite and online via Realtair

This is the home people dream of - a place where luxury meets comfort, where every space feels inviting, and where you instantly feel a sense of warmth and belonging. Beautifully renovated from front to back with exceptional attention to detail, this stunning Parkinson residence offers an effortless family lifestyle wrapped in elegance, quality and timeless style.

Top 5 Features at a Glance:

1. Stunning full internal renovation with premium fixtures throughout.
2. Exceptional entertainer's layout with 40ml granite breakfast bar all covered for outdoor living.
3. Designer kitchen with oversized island with 40ml granite benchtop and quality appliances.
4. Spacious family-sized floorplan with multiple living areas and dedicated study.
5. Prime location surrounded by parks, schools, shops and amenities.

4 2 2

AUCTION

Sat 30th May @ 11:30AM

VIEW

Sat 16th May @ 11:00AM - 11:30AM

AGENTS

Lynda Simpson
0424 279 188
lyndasimpson@ljhpp.com.au

AGENCY

LJ Hooker Property Partners
07 3344 0288

All information contained therein is gathered from relevant third parties sources.
We cannot guarantee or give any warranty about the information provided.
Interested parties must rely solely on their own enquiries.

LJ Hooker

Quietly positioned in a peaceful pocket of Parkinson, this beautifully renovated home offers an enviable lifestyle for families who love space, comfort and entertaining. Behind the charming street presence, the interiors reveal a refined blend of timeless elegance and modern functionality, creating a home that feels both luxurious and welcoming.

At the heart of the home is the breathtaking kitchen - a true showpiece designed to impress. Featuring an oversized stone island bench, extensive custom cabinetry, integrated wine storage, premium appliances and striking finishes, this is a space where everyday living and entertaining feels beautiful. Flowing directly from the kitchen, the open-plan living and dining areas create a seamless connection to the outdoors, filling the home with natural light and warmth.

Step outside and discover an entertainer's haven that feels straight from the pages of a magazine. The expansive covered alfresco has been beautifully designed for year-round gatherings, complete with an oversized serving window, 40ml granite breakfast bar with elegant waterfall edges, generous dining space and a stunning outdoor setting perfect for long lunches and celebrations. The landscaped surrounds add privacy and tranquillity, creating a resort-style atmosphere right at home.

The accommodation is equally impressive, with four spacious bedrooms designed for comfort and relaxation. The master suite feels like a private retreat, complemented by a beautifully renovated ensuite showcasing elegant finishes, feature lighting, full-wall tiling, a large walk-in shower and quality fittings. The family bathroom mirrors this refined and beautiful design with a stunning dual vanity, equally impressive shower and matching attention to detail.

Multiple living zones throughout the home provide flexibility for growing families, including formal and casual living areas plus a dedicated study ideal for working from home.

Additional features include:

- ? Ducted air conditioning
- ? Alarm system
- ? Solar panels
- ? Garden shed
- ? Multiple living areas
- ? Stylish laundry renovation with custom cabinetry (40ml granite benchtop)
- ? Double lock-up garage
- ? Quality flooring and updated finishes throughout

Positioned in one of Parkinson's most desirable family pockets, this home enjoys close proximity to local parks, shopping centres, schools, public transport and major amenities, offering both convenience and an exceptional lifestyle.

Homes of this calibre rarely become available - beautifully finished, thoughtfully designed and ready for a family to simply move in and enjoy. This is more than just a house; it's the life you've been waiting for.

Contact Lynda Simpson today to arrange your inspection.

All information contained herein is gathered from sources we consider to be reliable. However, we cannot guarantee or give any warranty about the information provided and interested parties must solely rely on their own enquiries.

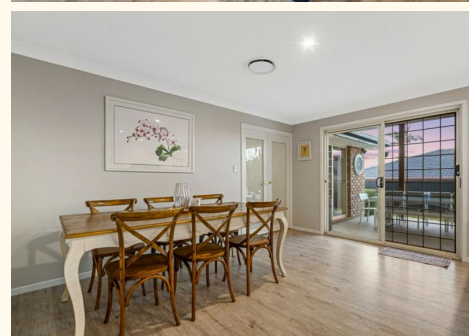
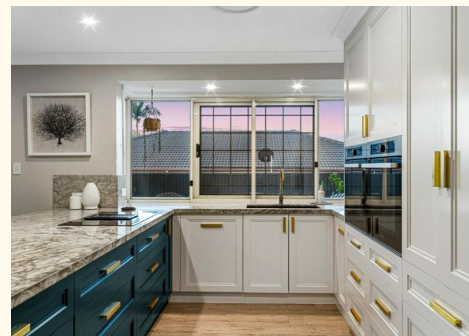
BDD Pty Ltd with Sunnybank Districts Pty Ltd ABN 47 676 306 264 /
21 107 068 020

MORE DETAILS

Property ID	AZ5DF4R
Property Type	House
Land Area	630 m2
Including	Ensuite Study Ducted Heating Alarm Dishwasher Outdoor Entertaining Built-in-Robes Secure Parking Fully Fenced Remote Garage Solar Panels

Lynda Simpson 0424 279 188
Agent | lyndasimpson@ljhpp.com.au

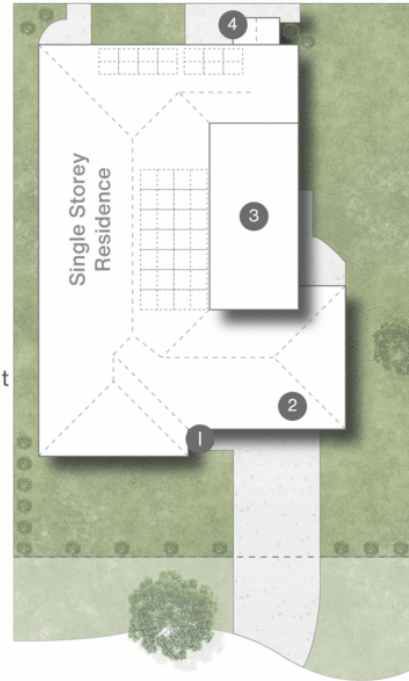
LJ Hooker Property Partners 07 3344 0288
25 Pinelands Road, SUNNYBANK HILLS QLD 4109
propertypartners.ljhooker.com.au | sunnybankhills@ljhpp.com.au



All information contained therein is gathered from relevant third parties sources.
We cannot guarantee or give any warranty about the information provided.
Interested parties must rely solely on their own enquiries.



- 1 Porch
- 2 Garage
- 3 Entertainment
- 4 Shed



Swanbrook Place



11 Swanbrook Place **PARKINSON**

4 | 2 | 2 | 246m² | 630m²

LJ Hooker Property Partners

All dimensions are approximate; they are subject to errors and inaccuracies and no liability will be accepted. Plans are shown for marketing purposes only.